


## Product datasheet

### Anti-TLR2 antibody [TL2.1] ab9100

★★★★★ 9 Abreviews 36 References 2 Images

#### Overview

<b>Product name</b>	Anti-TLR2 antibody [TL2.1]
<b>Description</b>	Mouse monoclonal [TL2.1] to TLR2
<b>Host species</b>	Mouse
<b>Tested applications</b>	<b>Suitable for:</b> IP, Functional Studies, Flow Cyt, WB, Neutralising, ICC/IF
<b>Species reactivity</b>	<b>Reacts with:</b> Human, Common marmoset <b>Predicted to work with:</b> Dog, Monkey, Cynomolgus monkey, Rhesus monkey 
<b>Immunogen</b>	Recombinant human TLR2 produced by the CHO/CD14 reporter cell line.
<b>Positive control</b>	WB: THP1 + LPS. IHC-P: Human TLR2. ICC: Human U937 cells. Flow: Human peripheral blood mononuclear cells.
<b>General notes</b>	<p>Ab9100 is a TLR2 function blocking antibody that is useful for studies on the role of TLR2 as a pattern recognition receptor in microbial products induced cytokine production by TLR2 bearing cells such as human periperal blood mononuclear cells.</p> <p>The Life Science industry has been in the grips of a reproducibility crisis for a number of years. Abcam is leading the way in addressing this with our range of recombinant monoclonal antibodies and knockout edited cell lines for gold-standard validation. Please check that this product meets your needs before purchasing.</p> <p>If you have any questions, special requirements or concerns, please send us an inquiry and/or contact our Support team ahead of purchase. Recommended alternatives for this product can be found below, along with publications, customer reviews and Q&amp;As</p>

#### Properties

<b>Form</b>	Liquid
<b>Storage instructions</b>	Shipped at 4°C. Upon delivery aliquot and store at -20°C. Avoid freeze / thaw cycles.
<b>Storage buffer</b>	Constituents: PBS, 1% BSA
<b>Purity</b>	Protein G purified
<b>Purification notes</b>	0.2 µm filtered
<b>Primary antibody notes</b>	Ab9100 is a TLR2 function blocking antibody that is useful for studies on the role of TLR2 as a pattern recognition receptor in microbial products induced cytokine production by TLR2 bearing cells such as human periperal blood mononuclear cells.

<b>Clonality</b>	Monoclonal
<b>Clone number</b>	TL2.1
<b>Isotype</b>	IgG2a

## Applications

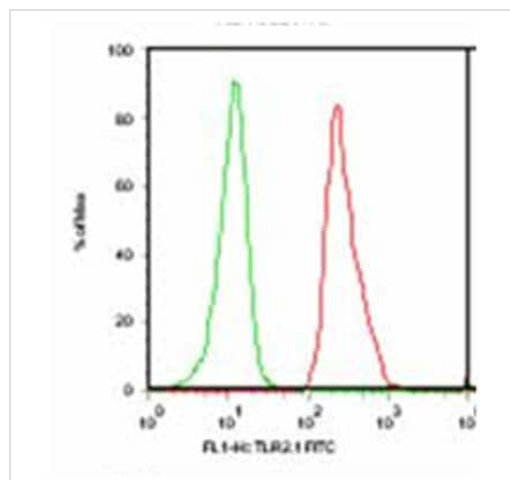
**The Abpromise guarantee** Our **Abpromise guarantee** covers the use of ab9100 in the following tested applications. The application notes include recommended starting dilutions; optimal dilutions/concentrations should be determined by the end user.

Application	Abreviews	Notes
IP		Use at an assay dependent concentration.
Functional Studies		Use at an assay dependent concentration.
Flow Cyt	★☆☆☆☆ (1)	Use 2-3µg for 10 <sup>5</sup> cells. Untreated and 0.4 % formaldehyde fixed cells can be used; do not permeabilize the cells. <b>ab170191</b> - Mouse monoclonal IgG2a, is suitable for use as an isotype control with this antibody.
WB	★★★★☆ (3)	1/50. Abcam recommends using non-reducing conditions.
Neutralising		Use at an assay dependent concentration. See Lien et al.
ICC/IF	★★★★☆ (1)	Use at an assay dependent concentration. Fix with PBS/2% formalin for 15 min at 4 degree C; permeabilize with acetone, 10 min, -20 degree C (see Flo et al J Leukoc Biol which used a conjugated form of the antibody).

## Target

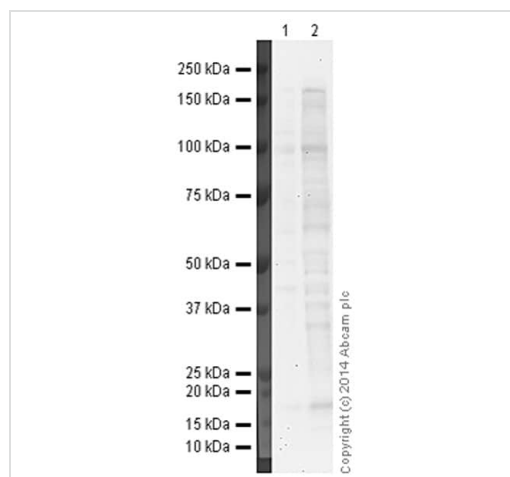
<b>Function</b>	Cooperates with LY96 to mediate the innate immune response to bacterial lipoproteins and other microbial cell wall components. Cooperates with TLR1 to mediate the innate immune response to bacterial lipoproteins or lipopeptides. Acts via MYD88 and TRAF6, leading to NF-kappa-B activation, cytokine secretion and the inflammatory response. May also promote apoptosis in response to lipoproteins. Recognizes mycoplasma macrophage-activating lipopeptide-2kD (MALP-2), soluble tuberculosis factor (STF), phenol-soluble modulin (PSM) and B.burgdorferi outer surface protein A lipoprotein (OspA-L) cooperatively with TLR6.
<b>Tissue specificity</b>	Highly expressed in peripheral blood leukocytes, in particular in monocytes, in bone marrow, lymph node and in spleen. Also detected in lung and in fetal liver. Levels are low in other tissues.
<b>Sequence similarities</b>	Belongs to the Toll-like receptor family. Contains 14 LRR (leucine-rich) repeats. Contains 1 TIR domain.
<b>Post-translational modifications</b>	Glycosylation of Asn-442 is critical for secretion of the N-terminal ectodomain of TLR2.

## Images



TLR2 staining on human peripheral blood mononuclear cells by using ab9100. Green: CD3+-cells; Red: CD14+ cells

Flow Cytometry - Anti-TLR2 antibody [TL2.1] (ab9100)



Western blot - Anti-TLR2 antibody [TL2.1] (ab9100)

**All lanes** : Anti-TLR2 antibody [TL2.1] (ab9100) at 1 µg/ml

**Lane 1** : THP1

**Lane 2** : THP1 + LPS

Lysates/proteins at 20 µg per lane.

### Secondary

**All lanes** : Goat Anti-Mouse IgG H&L (HRP) preadsorbed ([ab97040](#)) at 1/50000 dilution

Performed under reducing conditions.

This blot was produced using a 4-12% Bis-Tris gel under the MOPS buffer system. The gel was ran at 200V for 60 minutes before being transferred onto a nitrocellulose membrane at 30V for 70 minutes. The membrane was then blocked with 2% BSA for 60 minutes before being incubated with ab9100 (anti-TLR2 antibody; 1 µg/mL) for 18 hours at 4°C. Antibody binding was detected using [ab97040](#) (HRP-labelled goat anti-mouse IgG) at 1:50,000 dilutions for 1 hour at room temperature. Visualisation was conducted using ECL development solution [ab133406](#).

This gel was run under reducing conditions resulting in weak

signal. We recommend customers to use non-reducing conditions.

**Please note:** All products are "FOR RESEARCH USE ONLY. NOT FOR USE IN DIAGNOSTIC PROCEDURES"

### **Our Abpromise to you: Quality guaranteed and expert technical support**

---

- Replacement or refund for products not performing as stated on the datasheet
- Valid for 12 months from date of delivery
- Response to your inquiry within 24 hours
- We provide support in Chinese, English, French, German, Japanese and Spanish
- Extensive multi-media technical resources to help you
- We investigate all quality concerns to ensure our products perform to the highest standards

If the product does not perform as described on this datasheet, we will offer a refund or replacement. For full details of the Abpromise, please visit <https://www.abcam.com/abpromise> or contact our technical team.

### **Terms and conditions**

---

- Guarantee only valid for products bought direct from Abcam or one of our authorized distributors