

Product datasheet

Anti-TLR5 antibody [19D759.2] ab13876

★★★★☆ [11 Abreviews](#) [14 References](#) [2 Images](#)

Overview

Product name	Anti-TLR5 antibody [19D759.2]
Description	Mouse monoclonal [19D759.2] to TLR5
Host species	Mouse
Specificity	This antibody recognizes an intracellular epitope in the cytoplasmic domain of TLR5.
Tested applications	Suitable for: IP, ICC, WB, Flow Cyt (Intra), ICC/IF, IHC-P, IHC-Fr
Species reactivity	Reacts with: Mouse, Human
Immunogen	Synthetic peptide: SSKDFTWVQN ALLKHLDTQY SDQNRFNLCF EERDFVPGEN RIANIQDAW NSRKIVCLVS RHFLRDGWCL EAFSYAQGRC LSDLNSALIM VVVGSLSQY QL conjugated to KLH, corresponding to amino acids 700-800 of Human TLR5. Run BLAST with ExPASy Run BLAST with NCBI
Positive control	Flow Cyt (Intra): Ramos cells WB: Ramos and Raw cell lysate.
General notes	<p>The Life Science industry has been in the grips of a reproducibility crisis for a number of years. Abcam is leading the way in addressing this with our range of recombinant monoclonal antibodies and knockout edited cell lines for gold-standard validation. Please check that this product meets your needs before purchasing.</p> <p>If you have any questions, special requirements or concerns, please send us an inquiry and/or contact our Support team ahead of purchase. Recommended alternatives for this product can be found below, along with publications, customer reviews and Q&As</p>

Properties

Form	Liquid
Storage instructions	Shipped at 4°C. Upon delivery aliquot and store at -20°C. Avoid freeze / thaw cycles.
Storage buffer	pH: 7.40 Preservative: 0.05% Sodium azide Constituents: PBS, 0.05% BSA
Purity	Protein G purified
Clonality	Monoclonal
Clone number	19D759.2
Isotype	IgG2a

Light chain type

kappa

Applications

The Abpromise guarantee

Our **Abpromise guarantee** covers the use of ab13876 in the following tested applications.

The application notes include recommended starting dilutions; optimal dilutions/concentrations should be determined by the end user.

Application	Abreviews	Notes
IP	★★★★★ (2)	Use at an assay dependent concentration.
ICC	★★★★★ (1)	Use at an assay dependent concentration.
WB	★★★★★ (2)	Use a concentration of 1 - 3 µg/ml. Predicted molecular weight: 103 kDa.
Flow Cyt (Intra)		Use 2µg for 10 ⁶ cells. ab170191 - Mouse monoclonal IgG2a, is suitable for use as an isotype control with this antibody
ICC/IF	★★★★★ (1)	Use at an assay dependent concentration.
IHC-P	★★★★★ (2)	Use at an assay dependent concentration. Antigen retrieval with citrate buffer pH 6.
IHC-Fr	★★★★★ (1)	Use at an assay dependent concentration. (see Miller et al).

Target

Function

Participates in the innate immune response to microbial agents. Mediates detection of bacterial flagellins. Acts via MYD88 and TRAF6, leading to NF-kappa-B activation, cytokine secretion and the inflammatory response.

Tissue specificity

Highly expressed in ovary and in peripheral blood leukocytes, especially in monocytes, less in CD11c+ immature dendritic cells. Also detected in prostate and testis.

Involvement in disease

Systemic lupus erythematosus 1

Sequence similarities

Belongs to the Toll-like receptor family.
Contains 22 LRR (leucine-rich) repeats.
Contains 1 LRRCT domain.
Contains 1 TIR domain.

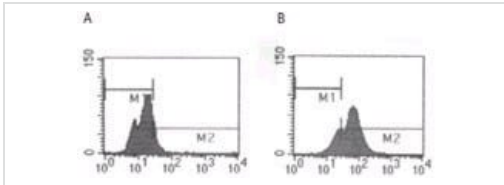
Post-translational modifications

Phosphorylated at Ser-805 by PKD/PRKD1; phosphorylation induces the production of inflammatory cytokines.
Phosphorylated at Tyr-798 upon flagellin binding; required for signaling.

Cellular localization

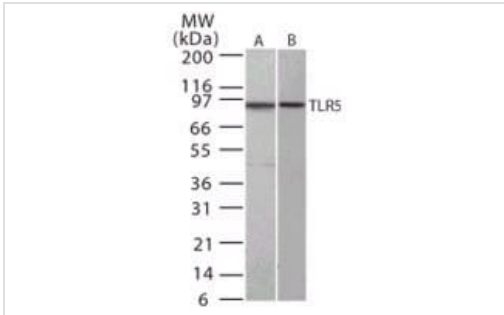
Membrane.

Images



Flow Cytometry (Intracellular) - Anti-TLR5 antibody [19D759.2] (ab13876)

Flow Cytometry (Intracellular) analysis of TLR5 in 10^6 Ramos cells using (A) $2\mu\text{g}$ of isotype control and (B) $2\mu\text{g}$ of ab13876



Western blot - Anti-TLR5 antibody [19D759.2] (ab13876)

All lanes : Anti-TLR5 antibody [19D759.2] (ab13876) at $2\mu\text{g/ml}$

Lane 1 : Ramos cell lysate

Lane 2 : Raw cell lysate

Predicted band size: 103 kDa

Western blot analysis of TLR5 in human Ramos cell lysate (A) and mouse Raw cell,lysate (B) using ab13876 at $2\mu\text{g/ml}$

Please note: All products are "FOR RESEARCH USE ONLY. NOT FOR USE IN DIAGNOSTIC PROCEDURES"

Our Abpromise to you: Quality guaranteed and expert technical support

- Replacement or refund for products not performing as stated on the datasheet
- Valid for 12 months from date of delivery
- Response to your inquiry within 24 hours
- We provide support in Chinese, English, French, German, Japanese and Spanish
- Extensive multi-media technical resources to help you
- We investigate all quality concerns to ensure our products perform to the highest standards

If the product does not perform as described on this datasheet, we will offer a refund or replacement. For full details of the Abpromise, please visit <https://www.abcam.com/abpromise> or contact our technical team.

Terms and conditions

- Guarantee only valid for products bought direct from Abcam or one of our authorized distributors