

Product datasheet

Anti-TLR8 antibody [OTI4F3] ab236521

3 Images

Overview

Product name	Anti-TLR8 antibody [OTI4F3]
Description	Mouse monoclonal [OTI4F3] to TLR8
Host species	Mouse
Tested applications	Suitable for: WB, IHC-P
Species reactivity	Reacts with: Human
Immunogen	Recombinant fragment corresponding to Human TLR8 aa 32-153. (NP_619542) produced in E.coli. Database link: Q9NR97
Positive control	IHC-P: Human spleen and spleen carcinoma tissue. WB: pCMV6-ENTRY TLR8 cDNA transfected HEK-293T cell lysate.
General notes	<p>The Life Science industry has been in the grips of a reproducibility crisis for a number of years. Abcam is leading the way in addressing this with our range of recombinant monoclonal antibodies and knockout edited cell lines for gold-standard validation. Please check that this product meets your needs before purchasing.</p> <p>If you have any questions, special requirements or concerns, please send us an inquiry and/or contact our Support team ahead of purchase. Recommended alternatives for this product can be found below, along with publications, customer reviews and Q&As</p>

Properties

Form	Liquid
Storage instructions	Shipped at 4°C. Store at +4°C short term (1-2 weeks). Upon delivery aliquot. Store at -20°C long term. Avoid freeze / thaw cycle.
Storage buffer	pH: 7.30 Preservative: 0.02% Sodium azide Constituents: PBS, 1% BSA, 50% Glycerol
Purity	Affinity purified
Purification notes	Purified from cell culture supernatant.
Clonality	Monoclonal
Clone number	OTI4F3

Isotype

IgG2a

Applications

The Abpromise guarantee

Our **Abpromise guarantee** covers the use of ab236521 in the following tested applications.

The application notes include recommended starting dilutions; optimal dilutions/concentrations should be determined by the end user.

Application	Abreviews	Notes
WB		1/2000. Predicted molecular weight: 120 kDa.
IHC-P		1/2000. Heat-induced epitope retrieval by 1 mM EDTA in 10 mM Tris buffer (pH 8.5) at 120°C for 3 minutes.

Target

Function

Key component of innate and adaptive immunity. TLRs (Toll-like receptors) control host immune response against pathogens through recognition of molecular patterns specific of microorganisms. Acts via MYD88 and TRAF6, leading to NF-kappa-B activation, cytokine secretion and the inflammatory response.

Tissue specificity

Detected in brain, heart, lung, liver, placenta, in monocytes, and at lower levels in CD11c+ immature dendritic cells.

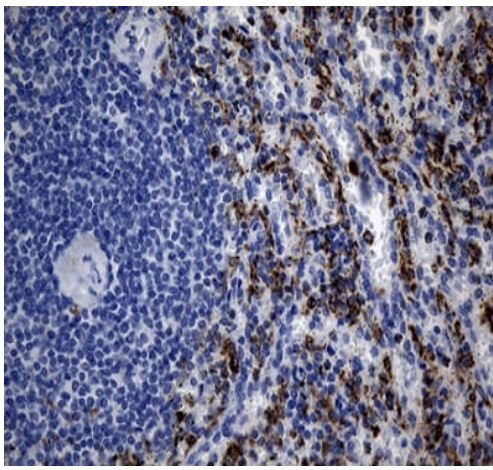
Sequence similarities

Belongs to the Toll-like receptor family.
Contains 23 LRR (leucine-rich) repeats.
Contains 1 LRRCT domain.
Contains 1 TIR domain.

Cellular localization

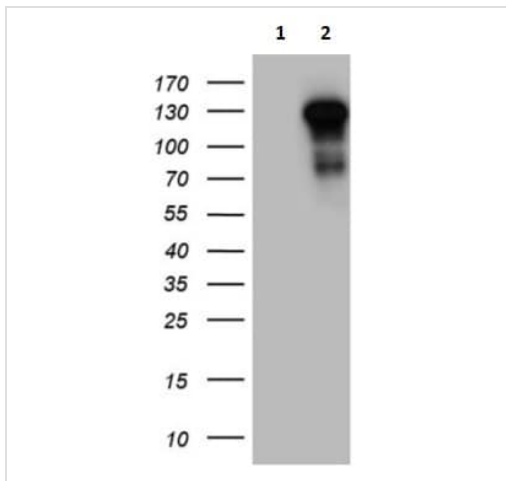
Membrane.

Images



Immunohistochemistry (Formalin/PFA-fixed paraffin-embedded sections) - Anti-TLR8 antibody [OT14F3] (ab236521)

Paraffin-embedded human spleen tissue stained for TLR8 using ab236521 at 1/2000 dilution in immunohistochemical analysis.



Western blot - Anti-TLR8 antibody [OT14F3] (ab236521)

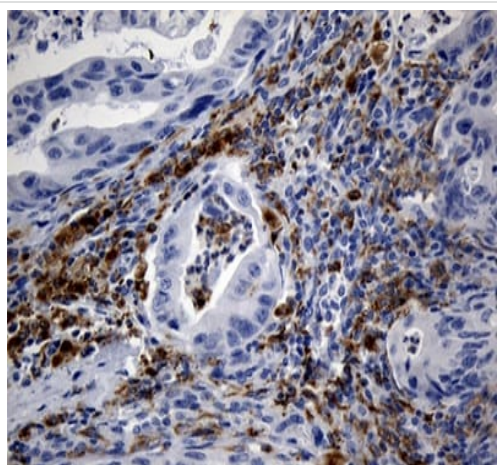
All lanes : Anti-TLR8 antibody [OT14F3] (ab236521) at 1/2000 dilution

Lane 1 : pCMV6-ENTRY control cDNA transfected HEK-293T (Human epithelial cell line from embryonic kidney transformed with large T antigen) cell lysate

Lane 2 : pCMV6-ENTRY TLR8 cDNA transfected HEK-293T (Human epithelial cell line from embryonic kidney transformed with large T antigen) cell lysate

Lysates/proteins at 5 μ g per lane.

Predicted band size: 120 kDa



Paraffin-embedded human spleen carcinoma tissue stained for TLR8 using ab236521 at 1/2000 dilution in immunohistochemical analysis.

Immunohistochemistry (Formalin/PFA-fixed paraffin-embedded sections) - Anti-TLR8 antibody [OT14F3] (ab236521)

Please note: All products are "FOR RESEARCH USE ONLY. NOT FOR USE IN DIAGNOSTIC PROCEDURES"

Our Abpromise to you: Quality guaranteed and expert technical support

- Replacement or refund for products not performing as stated on the datasheet
- Valid for 12 months from date of delivery
- Response to your inquiry within 24 hours

- We provide support in Chinese, English, French, German, Japanese and Spanish
- Extensive multi-media technical resources to help you
- We investigate all quality concerns to ensure our products perform to the highest standards

If the product does not perform as described on this datasheet, we will offer a refund or replacement. For full details of the Abpromise, please visit <https://www.abcam.com/abpromise> or contact our technical team.

Terms and conditions

- Guarantee only valid for products bought direct from Abcam or one of our authorized distributors