


Anti-TM2D1/BBP antibody ab230876

3 Images

Overview

| | |
|----------------------------|---|
| Product name | Anti-TM2D1/BBP antibody |
| Description | Rabbit polyclonal to TM2D1/BBP |
| Host species | Rabbit |
| Tested applications | Suitable for: IHC-P, WB |
| Species reactivity | Reacts with: Mouse, Human Predicted to work with: Cow  |
| Immunogen | Synthetic peptide corresponding to Human TM2D1/BBP (internal sequence) conjugated to keyhole limpet haemocyanin. Database link: Q9BX74 |
| Positive control | WB: MCF7 whole cell lysate; Mouse kidney lysate. IHC-P: Human testis and brain cortex tissue. |
| General notes | <p>The Life Science industry has been in the grips of a reproducibility crisis for a number of years. Abcam is leading the way in addressing this with our range of recombinant monoclonal antibodies and knockout edited cell lines for gold-standard validation. Please check that this product meets your needs before purchasing.</p> <p>If you have any questions, special requirements or concerns, please send us an inquiry and/or contact our Support team ahead of purchase. Recommended alternatives for this product can be found below, along with publications, customer reviews and Q&As</p> |

Properties

| | |
|-----------------------------|---|
| Form | Liquid |
| Storage instructions | Shipped at 4°C. Store at +4°C short term (1-2 weeks). Upon delivery aliquot. Store at -20°C long term. Avoid freeze / thaw cycle. |
| Storage buffer | pH: 7.30 Preservative: 0.01% Sodium azide Constituents: PBS, 30% Glycerol (glycerin, glycerine) |
| Purity | Immunogen affinity purified |
| Clonality | Polyclonal |
| Isotype | IgG |

Applications

The Abpromise guarantee

Our **Abpromise guarantee** covers the use of ab230876 in the following tested applications.

The application notes include recommended starting dilutions; optimal dilutions/concentrations should be determined by the end user.

| Application | Abreviews | Notes |
|-------------|-----------|---|
| IHC-P | | 1/100. |
| WB | | 1/500 - 1/1000. Predicted molecular weight: 22 kDa. |

Target

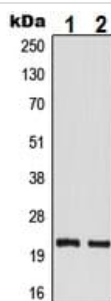
Relevance

The protein encoded by this gene is a beta-amyloid peptide-binding protein. It contains a structural module related to that of the seven transmembrane domain G protein-coupled receptor superfamily and known to be important in heterotrimeric G protein activation. Beta-amyloid peptide has been established to be a causative factor in neuron death and the consequent diminution of cognitive abilities observed in Alzheimer's disease. This protein may be a target of neurotoxic beta-amyloid peptide, and may mediate cellular vulnerability to beta-amyloid peptide toxicity through a G protein-regulated program of cell death.

Cellular localization

Membrane; Multi-pass membrane protein

Images



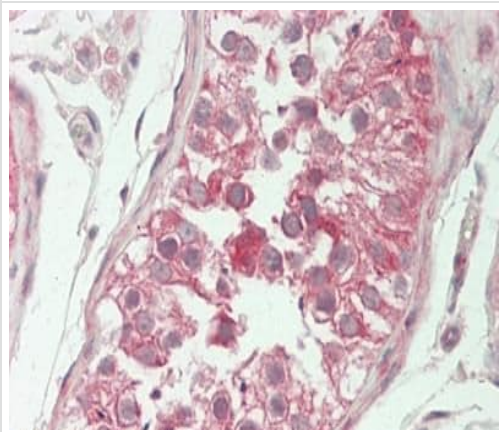
Western blot - Anti-TM2D1/BBP antibody
(ab230876)

All lanes : Anti-TM2D1/BBP antibody (ab230876) at 1/500 dilution

Lane 1 : MCF7 (Human breast adenocarcinoma cell line) whole cell lysate

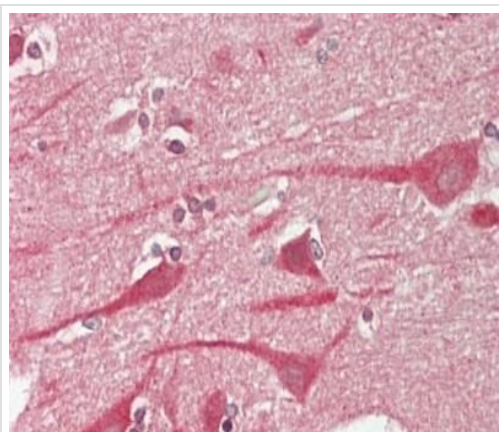
Lane 2 : Mouse kidney lysate

Predicted band size: 22 kDa



Formalin-fixed, paraffin-embedded human testis tissue stained for TM2D1/BBP using ab230876 at 1/100 dilution in immunohistochemical analysis.

Immunohistochemistry (Formalin/PFA-fixed paraffin-embedded sections) - Anti-TM2D1/BBP antibody (ab230876)



Formalin-fixed, paraffin-embedded human brain cortex tissue stained for TM2D1/BBP using ab230876 at 1/100 dilution in immunohistochemical analysis.

Immunohistochemistry (Formalin/PFA-fixed paraffin-embedded sections) - Anti-TM2D1/BBP antibody (ab230876)

Please note: All products are "FOR RESEARCH USE ONLY. NOT FOR USE IN DIAGNOSTIC PROCEDURES"

Our Abpromise to you: Quality guaranteed and expert technical support

- Replacement or refund for products not performing as stated on the datasheet
- Valid for 12 months from date of delivery
- Response to your inquiry within 24 hours
- We provide support in Chinese, English, French, German, Japanese and Spanish
- Extensive multi-media technical resources to help you
- We investigate all quality concerns to ensure our products perform to the highest standards

If the product does not perform as described on this datasheet, we will offer a refund or replacement. For full details of the Abpromise, please visit <https://www.abcam.com/abpromise> or contact our technical team.

Terms and conditions

- Guarantee only valid for products bought direct from Abcam or one of our authorized distributors