

## Product datasheet

# Anti-TMEM164 antibody ab122510

3 Images

### Overview

---

<b>Product name</b>	Anti-TMEM164 antibody
<b>Description</b>	Rabbit polyclonal to TMEM164
<b>Host species</b>	Rabbit
<b>Tested applications</b>	<b>Suitable for:</b> ICC/IF, IHC-P, WB
<b>Species reactivity</b>	<b>Reacts with:</b> Human
<b>Immunogen</b>	antigen, corresponding to amino acids 1-38 (MSRYSYQSLL DWLYGGVDPS FAGNGGPDCA AFLSWQQR) of Human TMEM164. <a href="#">Run BLAST with ExPASy</a> <a href="#">Run BLAST with NCBI</a>
<b>Positive control</b>	Human lung tissue; RT4 and U251 MG cell lysates.
<b>General notes</b>	<p>The Life Science industry has been in the grips of a reproducibility crisis for a number of years. Abcam is leading the way in addressing this with our range of recombinant monoclonal antibodies and knockout edited cell lines for gold-standard validation. Please check that this product meets your needs before purchasing.</p> <p>If you have any questions, special requirements or concerns, please send us an inquiry and/or contact our Support team ahead of purchase. Recommended alternatives for this product can be found below, along with publications, customer reviews and Q&amp;As</p>

### Properties

---

<b>Form</b>	Liquid
<b>Storage instructions</b>	Shipped at 4°C. Upon delivery aliquot and store at -20°C. Avoid repeated freeze / thaw cycles.
<b>Storage buffer</b>	pH: 7.20 Preservative: 0.02% Sodium azide Constituents: 40% Glycerol (glycerin, glycerine), 59% PBS
<b>Purity</b>	Immunogen affinity purified
<b>Clonality</b>	Polyclonal
<b>Isotype</b>	IgG

### Applications

---

## The Abpromise guarantee

Our **Abpromise guarantee** covers the use of ab122510 in the following tested applications.

The application notes include recommended starting dilutions; optimal dilutions/concentrations should be determined by the end user.

Application	Abreviews	Notes
ICC/IF		Use a concentration of 0.25 - 2 µg/ml.
IHC-P		1/50 - 1/200. Perform heat mediated antigen retrieval with citrate buffer pH 6 before commencing with IHC staining protocol. pH6.
WB		Use a concentration of 0.04 - 0.4 µg/ml.

## Target

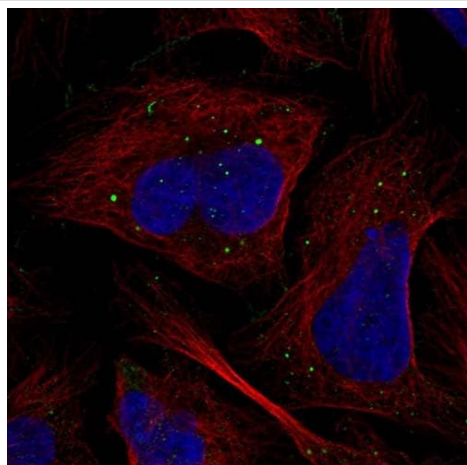
### Sequence similarities

Belongs to the TMEM164 family.

### Cellular localization

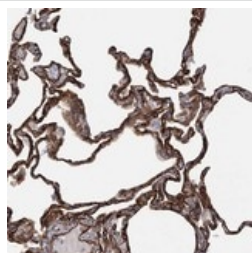
Membrane.

## Images



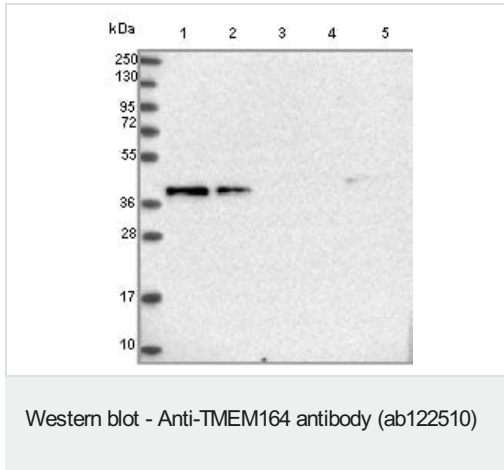
Immunocytochemistry/ Immunofluorescence - Anti-TMEM164 antibody (ab122510)

Immunofluorescent staining of Human cell line U-2 OS shows positivity in vesicles. Recommended concentration of ab122510 1-4 µg/ml. Cells treated with PFA/Triton X-100.



Immunohistochemistry (Formalin/PFA-fixed paraffin-embedded sections) - Anti-TMEM164 antibody (ab122510)

ab122510 at 1/150 dilution staining TMEM164 in Paraffin-embedded Human Lung tissue by Immunohistochemistry.



**All lanes :** Anti-TMEM164 antibody (ab122510) at 1/250 dilution

**Lane 1 :** RT4 lysate

**Lane 2 :** U251 MG lysate

**Lane 3 :** Human plasma

**Lane 4 :** Human liver lysate

**Lane 5 :** Human tonsil lysate

Developed using the ECL technique.

**Please note:** All products are "FOR RESEARCH USE ONLY. NOT FOR USE IN DIAGNOSTIC PROCEDURES"

### Our Abpromise to you: Quality guaranteed and expert technical support

---

- Replacement or refund for products not performing as stated on the datasheet
- Valid for 12 months from date of delivery
- Response to your inquiry within 24 hours
- We provide support in Chinese, English, French, German, Japanese and Spanish
- Extensive multi-media technical resources to help you
- We investigate all quality concerns to ensure our products perform to the highest standards

If the product does not perform as described on this datasheet, we will offer a refund or replacement. For full details of the Abpromise, please visit <https://www.abcam.com/abpromise> or contact our technical team.

### Terms and conditions

---

- Guarantee only valid for products bought direct from Abcam or one of our authorized distributors