




## Product datasheet

### Anti-TMEM19 antibody ab236852

5 Images

#### Overview

<b>Product name</b>	Anti-TMEM19 antibody
<b>Description</b>	Rabbit polyclonal to TMEM19
<b>Host species</b>	Rabbit
<b>Tested applications</b>	<b>Suitable for:</b> WB, IHC-P, ICC/IF
<b>Species reactivity</b>	<b>Reacts with:</b> Mouse, Human <b>Predicted to work with:</b> Rat, Orangutan 
<b>Immunogen</b>	Recombinant fragment corresponding to Human TMEM19 aa 100-250. Database link: <a href="#">Q96HH6</a>  <a href="#">Run BLAST with</a>  <a href="#">Run BLAST with</a>
<b>Positive control</b>	WB: MCF7, U-251 MG and A549 whole cell lysates; Mouse stomach lysate. IHC-P: Human lung, gastric cancer and breast cancer tissues. ICC/IF: A549 cells.
<b>General notes</b>	<p>The Life Science industry has been in the grips of a reproducibility crisis for a number of years. Abcam is leading the way in addressing this with our range of recombinant monoclonal antibodies and knockout edited cell lines for gold-standard validation. Please check that this product meets your needs before purchasing.</p> <p>If you have any questions, special requirements or concerns, please send us an inquiry and/or contact our Support team ahead of purchase. Recommended alternatives for this product can be found below, along with publications, customer reviews and Q&amp;As</p>

#### Properties

<b>Form</b>	Liquid
<b>Storage instructions</b>	Shipped at 4°C. Store at +4°C short term (1-2 weeks). Upon delivery aliquot. Store at -20°C long term. Avoid freeze / thaw cycle.
<b>Storage buffer</b>	pH: 7.40 Preservative: 0.03% Proclin 300 Constituents: 50% Glycerol (glycerin, glycerine), PBS
<b>Purity</b>	Protein G purified
<b>Purification notes</b>	Purity >95%.
<b>Clonality</b>	Polyclonal
<b>Isotype</b>	IgG

## Applications

### The Abpromise guarantee

Our **Abpromise guarantee** covers the use of ab236852 in the following tested applications.

The application notes include recommended starting dilutions; optimal dilutions/concentrations should be determined by the end user.

Application	Abreviews	Notes
WB		1/500 - 1/2000. Predicted molecular weight: 36 kDa.
IHC-P		1/20 - 1/200.
ICC/IF		1/50 - 1/200.

## Target

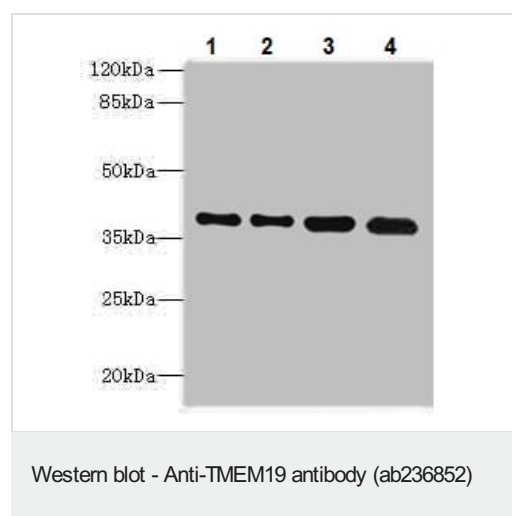
### Sequence similarities

Belongs to the TMEM19 family.

### Cellular localization

Membrane.

## Images



**All lanes** : Anti-TMEM19 antibody (ab236852) at 1/500 dilution

**Lane 1** : MCF7 (human breast adenocarcinoma cell line) whole cell lysate

**Lane 2** : U-251 MG (human brain glioma cell line) whole cell lysate

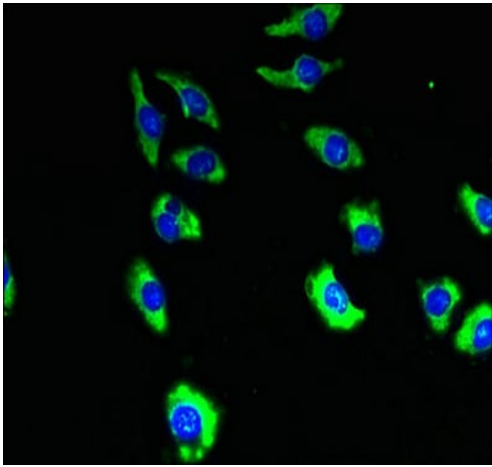
**Lane 3** : Mouse stomach lysate

**Lane 4** : A549 (human lung carcinoma cell line) whole cell lysate

### Secondary

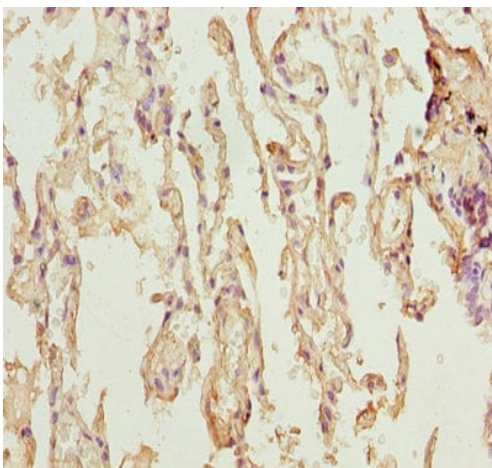
**All lanes** : Goat polyclonal to Rabbit IgG at 1/10000 dilution

**Predicted band size:** 36 kDa



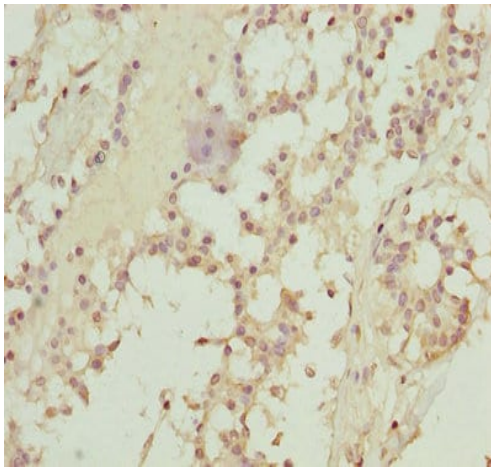
Immunocytochemistry/ Immunofluorescence - Anti-TMEM19 antibody (ab236852)

A549 (human lung carcinoma cell line) cells stained for TMEM19 (green) using ab236852 at 1/100 dilution in ICC/IF, followed by Alexa Fluor 488<sup>®</sup> conjugated Goat Anti-Rabbit IgG (H+L).



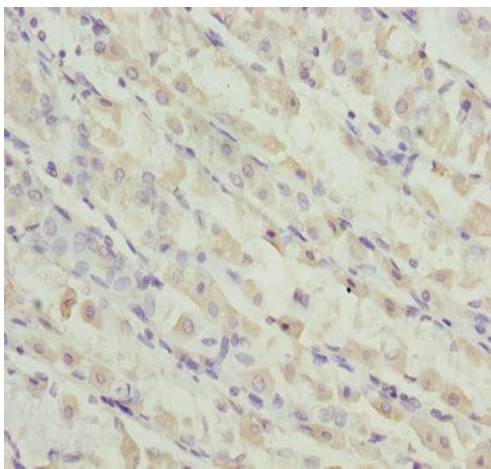
Immunohistochemistry (Formalin/PFA-fixed paraffin-embedded sections) - Anti-TMEM19 antibody (ab236852)

Paraffin-embedded human lung tissue stained for TMEM19 using ab236852 at 1/100 dilution in immunohistochemical analysis.



Paraffin-embedded human breast cancer tissue stained for TMEM19 using ab236852 at 1/100 dilution in immunohistochemical analysis.

Immunohistochemistry (Formalin/PFA-fixed paraffin-embedded sections) - Anti-TMEM19 antibody (ab236852)



Paraffin-embedded human gastric cancer tissue stained for TMEM19 using ab236852 at 1/100 dilution in immunohistochemical analysis.

Immunohistochemistry (Formalin/PFA-fixed paraffin-embedded sections) - Anti-TMEM19 antibody (ab236852)

**Please note:** All products are "FOR RESEARCH USE ONLY. NOT FOR USE IN DIAGNOSTIC PROCEDURES"

### Our Abpromise to you: Quality guaranteed and expert technical support

- Replacement or refund for products not performing as stated on the datasheet
- Valid for 12 months from date of delivery
- Response to your inquiry within 24 hours

- We provide support in Chinese, English, French, German, Japanese and Spanish
- Extensive multi-media technical resources to help you
- We investigate all quality concerns to ensure our products perform to the highest standards

If the product does not perform as described on this datasheet, we will offer a refund or replacement. For full details of the Abpromise, please visit <https://www.abcam.com/abpromise> or contact our technical team.

#### **Terms and conditions**

---

- Guarantee only valid for products bought direct from Abcam or one of our authorized distributors