




Product datasheet

Anti-TMEM192 antibody ab236858

5 Images

Overview

Product name	Anti-TMEM192 antibody
Description	Rabbit polyclonal to TMEM192
Host species	Rabbit
Tested applications	Suitable for: IHC-P, WB, IP, ICC/IF
Species reactivity	Reacts with: Human Predicted to work with: Orangutan 
Immunogen	Recombinant fragment corresponding to Human TMEM192 aa 150 to the C-terminus. Database link: Q8IY95  Run BLAST with  Run BLAST with
Positive control	WB: HeLa whole cell lysate. IHC-P: Human adrenal gland and glioma tissues. ICC/IF: A549 cells. IP: Jurkat whole cell lysate.
General notes	<p>The Life Science industry has been in the grips of a reproducibility crisis for a number of years. Abcam is leading the way in addressing this with our range of recombinant monoclonal antibodies and knockout edited cell lines for gold-standard validation. Please check that this product meets your needs before purchasing.</p> <p>If you have any questions, special requirements or concerns, please send us an inquiry and/or contact our Support team ahead of purchase. Recommended alternatives for this product can be found below, along with publications, customer reviews and Q&As</p>

Properties

Form	Liquid
Storage instructions	Shipped at 4°C. Store at +4°C short term (1-2 weeks). Upon delivery aliquot. Store at -20°C long term. Avoid freeze / thaw cycle.
Storage buffer	pH: 7.40 Preservative: 0.03% Proclin 300 Constituents: 50% Glycerol (glycerin, glycerine), PBS
Purity	Protein G purified
Purification notes	Purity >95%.
Clonality	Polyclonal
Isotype	IgG

Applications

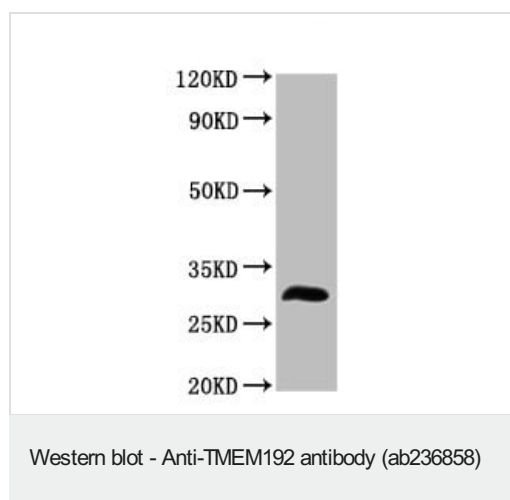
The Abpromise guarantee Our **Abpromise guarantee** covers the use of ab236858 in the following tested applications. The application notes include recommended starting dilutions; optimal dilutions/concentrations should be determined by the end user.

Application	Abreviews	Notes
IHC-P		1/20 - 1/200.
WB		1/1000 - 1/5000. Predicted molecular weight: 31 kDa.
IP		1/200 - 1/2000.
ICC/IF		1/50 - 1/500.

Target

Tissue specificity	Strongly expressed in kidney, liver, lung and pancreas.
Sequence similarities	Belongs to the TMEM192 family.
Post-translational modifications	Phosphorylated upon DNA damage, probably by ATM or ATR. Not N-glycosylated.
Cellular localization	Lysosome membrane. Late endosome.

Images

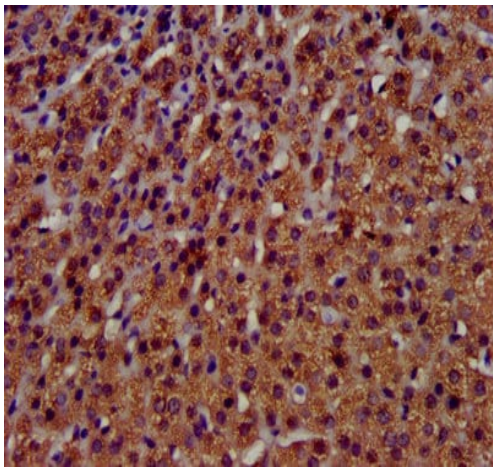


Anti-TMEM192 antibody (ab236858) at 1/1000 dilution + HeLa (human epithelial cell line from cervix adenocarcinoma) whole cell lysate

Secondary

Goat polyclonal to rabbit IgG at 1/50000 dilution

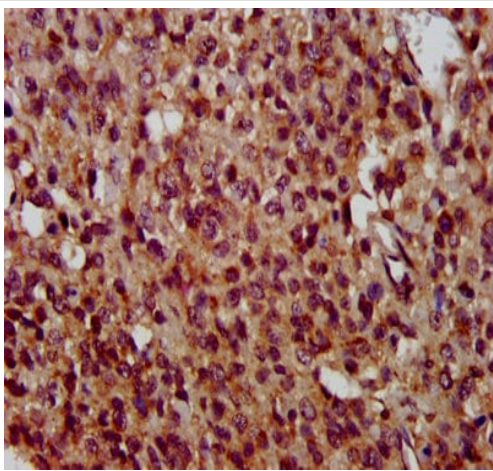
Predicted band size: 31 kDa



Immunohistochemistry (Formalin/PFA-fixed paraffin-embedded sections) - Anti-TMEM192 antibody (ab236858)

Paraffin-embedded human adrenal gland tissue stained for TMEM192 using ab236858 at 1/400 dilution in immunohistochemical analysis.

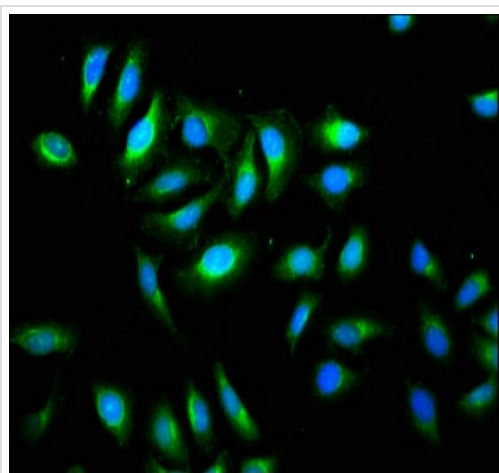
After dewaxing and hydration, antigen retrieval was mediated by high pressure in a citrate buffer (pH 6.0). Section was blocked with 10% normal goat serum 30 minutes at RT. Then primary antibody (1% BSA) was incubated at 4°C overnight. The primary is detected by a biotinylated secondary antibody and visualized tissue using an HRP conjugated SP system.



Immunohistochemistry (Formalin/PFA-fixed paraffin-embedded sections) - Anti-TMEM192 antibody (ab236858)

Paraffin-embedded human glioma tissue stained for TMEM192 using ab236858 at 1/400 dilution in immunohistochemical analysis.

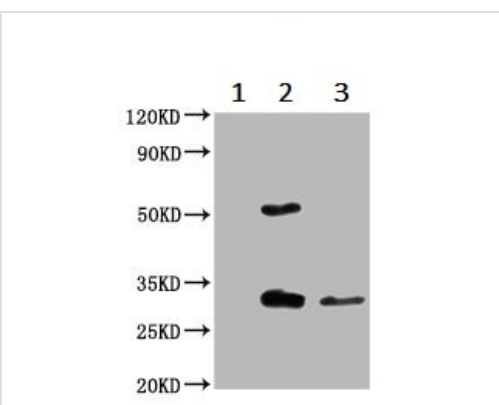
After dewaxing and hydration, antigen retrieval was mediated by high pressure in a citrate buffer (pH 6.0). Section was blocked with 10% normal goat serum 30 minutes at RT. Then primary antibody (1% BSA) was incubated at 4°C overnight. The primary is detected by a biotinylated secondary antibody and visualized tissue using an HRP conjugated SP system.



Immunocytochemistry/ Immunofluorescence - Anti-TMEM192 antibody (ab236858)

A549 (human lung carcinoma cell line) cells stained for TMEM192 (green) using ab236858 at 1/133 dilution in ICC/IF, followed by Alexa Fluor 488[®] conjugated Goat Anti-Rabbit IgG (H+L).

The cells were fixed in 4% formaldehyde, permeabilized tissue using 0.2% Triton X-100 and blocked in 10% normal Goat Serum. The cells were then incubated with the antibody overnight at 4°C



Immunoprecipitation - Anti-TMEM192 antibody (ab236858)

TMEM192 was immunoprecipitated from 0.5 mg Jurkat (human T cell leukemia cell line from peripheral blood) whole cell extract with ab236858 at 1/200 dilution.

Lane 1: Control rabbit IgG IP in Jurkat whole cell lysate.

Lane 2: ab236858 IP in Jurkat whole cell lysate.

Lane 3: Jurkat whole cell lysate 10 µg (Input).

For western blotting, an HRP-conjugated Protein G antibody was used as the secondary antibody at 1/2000 dilution.

Please note: All products are "FOR RESEARCH USE ONLY. NOT FOR USE IN DIAGNOSTIC PROCEDURES"

Our Promise to you: Quality guaranteed and expert technical support

- Replacement or refund for products not performing as stated on the datasheet
- Valid for 12 months from date of delivery
- Response to your inquiry within 24 hours
- We provide support in Chinese, English, French, German, Japanese and Spanish

- Extensive multi-media technical resources to help you
- We investigate all quality concerns to ensure our products perform to the highest standards

If the product does not perform as described on this datasheet, we will offer a refund or replacement. For full details of the Abpromise, please visit <https://www.abcam.com/abpromise> or contact our technical team.

Terms and conditions

- Guarantee only valid for products bought direct from Abcam or one of our authorized distributors