

Product datasheet

Anti-TMEM25 antibody ab121362

[6 Images](#)

Overview

Product name	Anti-TMEM25 antibody
Description	Rabbit polyclonal to TMEM25
Host species	Rabbit
Tested applications	Suitable for: ICC/IF, IHC-P, WB
Species reactivity	Reacts with: Human
Immunogen	antigen, corresponding to amino acids 262-364 of Human TMEM25 (Uniprot: Q86YD3)
Positive control	Human duodenum tissue and Liver lysate.
General notes	<p>The Life Science industry has been in the grips of a reproducibility crisis for a number of years. Abcam is leading the way in addressing this with our range of recombinant monoclonal antibodies and knockout edited cell lines for gold-standard validation. Please check that this product meets your needs before purchasing.</p> <p>If you have any questions, special requirements or concerns, please send us an inquiry and/or contact our Support team ahead of purchase. Recommended alternatives for this product can be found below, along with publications, customer reviews and Q&As</p>

Properties

Form	Liquid
Storage instructions	Shipped at 4°C. Upon delivery aliquot and store at -20°C. Avoid freeze / thaw cycles.
Storage buffer	pH: 7.20 Preservative: 0.02% Sodium azide Constituents: 59% PBS, 40% Glycerol (glycerin, glycerine)
Purity	Immunogen affinity purified
Clonality	Polyclonal
Isotype	IgG

Applications

The Abpromise guarantee Our **Abpromise guarantee** covers the use of ab121362 in the following tested applications. The application notes include recommended starting dilutions; optimal dilutions/concentrations should be determined by the end user.

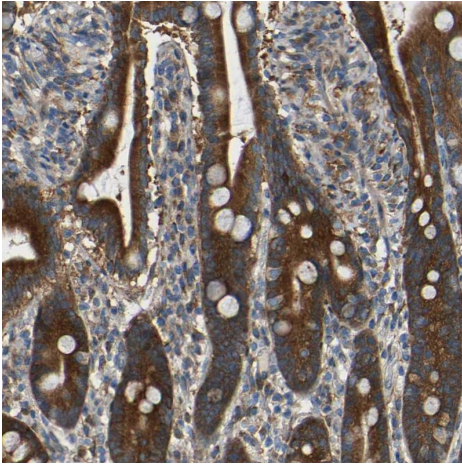
Application	Abreviews	Notes
ICC/IF		Use a concentration of 0.25 - 2 µg/ml.
IHC-P		1/20 - 1/50. Perform heat mediated antigen retrieval with citrate buffer pH 6 before commencing with IHC staining protocol.
WB		1/250 - 1/500.

Target

Sequence similarities Contains 1 Ig-like (immunoglobulin-like) domain.

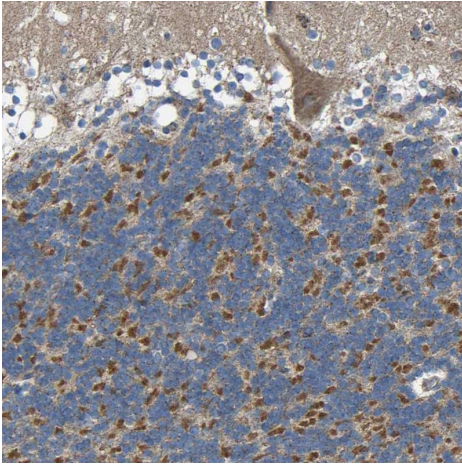
Cellular localization Secreted and Cell membrane.

Images



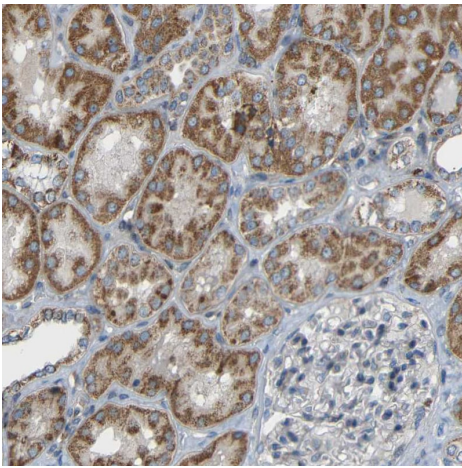
Immunohistochemical analysis of human duodenum tissue labelled for TMEM25 using ab121362 at a dilution of 1/50. Positive cytoplasmic staining in glandular cells.

Immunohistochemistry (Formalin/PFA-fixed paraffin-embedded sections) - Anti-TMEM25 antibody (ab121362)



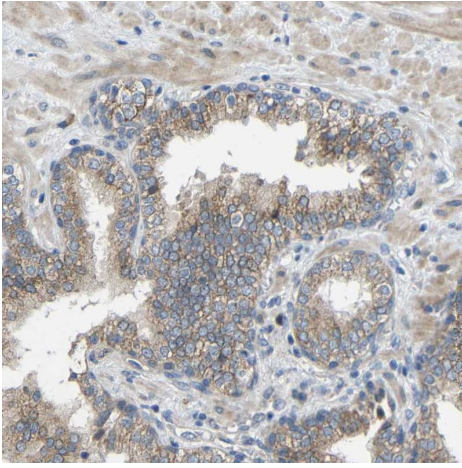
Immunohistochemical analysis of human cerebellum tissue labelled for TMEM25 using ab121362 at a dilution of 1/50. Positive cytoplasmic staining in granular layer cells.

Immunohistochemistry (Formalin/PFA-fixed paraffin-embedded sections) - Anti-TMEM25 antibody (ab121362)



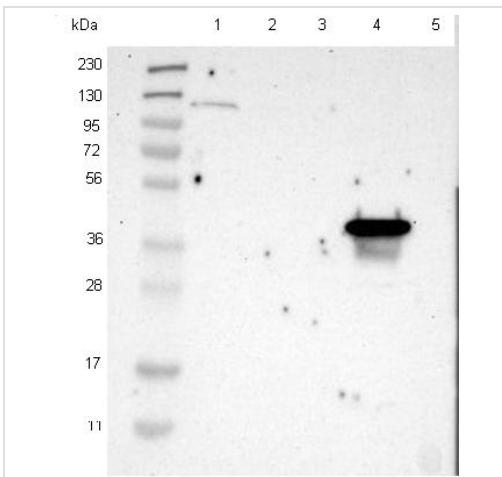
Immunohistochemical analysis of human kidney tissue labelled for TMEM25 using ab121362 at a dilution of 1/50. Positive cytoplasmic staining in human tubule cells.

Immunohistochemistry (Formalin/PFA-fixed paraffin-embedded sections) - Anti-TMEM25 antibody (ab121362)



Immunohistochemistry (Formalin/PFA-fixed paraffin-embedded sections) - Anti-TMEM25 antibody (ab121362)

Immunohistochemical analysis of human prostate tissue labelled for TMEM25 using ab121362 at a dilution of 1/50. Positive cytoplasmic and membranous staining in human glandular cells.



Western blot - Anti-TMEM25 antibody (ab121362)

All lanes : Anti-TMEM25 antibody (ab121362) at 1/250 dilution

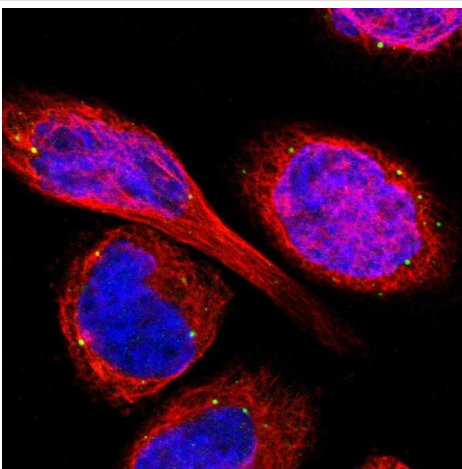
Lane 1 : RT-4 lysate

Lane 2 : U-251 MG lysate

Lane 3 : Human Plasma lysate

Lane 4 : Liver lysate

Lane 5 : Tonsil lysate



Immunocytochemistry/ Immunofluorescence - Anti-TMEM25 antibody (ab121362)

Immunofluorescent staining of human cell line A-431 shows positivity in vesicles.

Please note: All products are "FOR RESEARCH USE ONLY. NOT FOR USE IN DIAGNOSTIC PROCEDURES"

Our Abpromise to you: Quality guaranteed and expert technical support

- Replacement or refund for products not performing as stated on the datasheet
- Valid for 12 months from date of delivery
- Response to your inquiry within 24 hours

- We provide support in Chinese, English, French, German, Japanese and Spanish
- Extensive multi-media technical resources to help you
- We investigate all quality concerns to ensure our products perform to the highest standards

If the product does not perform as described on this datasheet, we will offer a refund or replacement. For full details of the Abpromise, please visit <https://www.abcam.com/abpromise> or contact our technical team.

Terms and conditions

- Guarantee only valid for products bought direct from Abcam or one of our authorized distributors