


## Product datasheet

# Anti-TMEM256 antibody [EPR12842] ab181239

Recombinant RabMAb

5 Images

### Overview

<b>Product name</b>	Anti-TMEM256 antibody [EPR12842]
<b>Description</b>	Rabbit monoclonal [EPR12842] to TMEM256
<b>Host species</b>	Rabbit
<b>Tested applications</b>	<b>Suitable for:</b> Flow Cyt (Intra), WB, IP
<b>Species reactivity</b>	<b>Reacts with:</b> Human <b>Predicted to work with:</b> Mouse, Rat 
<b>Immunogen</b>	Synthetic peptide. This information is proprietary to Abcam and/or its suppliers.
<b>Positive control</b>	Human fetal liver, fetal kidney, A549, Y79 and LnCaP lysates; A549 cells.
<b>General notes</b>	<p>This product is a recombinant monoclonal antibody, which offers several advantages including:</p> <ul style="list-style-type: none"><li>- High batch-to-batch consistency and reproducibility</li><li>- Improved sensitivity and specificity</li><li>- Long-term security of supply</li><li>- Animal-free production</li></ul> <p>For more information <a href="#">see here</a>.</p> <p>Our RabMAb<sup>®</sup> technology is a patented hybridoma-based technology for making rabbit monoclonal antibodies. For details on our patents, please refer to <a href="#">RabMAb<sup>®</sup> patents</a>.</p>

### Properties

<b>Form</b>	Liquid
<b>Storage instructions</b>	Shipped at 4°C. Store at +4°C short term (1-2 weeks). Upon delivery aliquot. Store at -20°C long term. Avoid freeze / thaw cycle.
<b>Storage buffer</b>	Preservative: 0.01% Sodium azide Constituents: 59% PBS, 40% Glycerol (glycerin, glycerine), 0.05% BSA
<b>Purity</b>	Tissue culture supernatant
<b>Clonality</b>	Monoclonal
<b>Clone number</b>	EPR12842
<b>Isotype</b>	IgG

## Applications

### The Abpromise guarantee

Our **Abpromise guarantee** covers the use of ab181239 in the following tested applications.

The application notes include recommended starting dilutions; optimal dilutions/concentrations should be determined by the end user.

Application	Abreviews	Notes
Flow Cyt (Intra)		1/200. <b>ab172730</b> - Rabbit monoclonal IgG, is suitable for use as an isotype control with this antibody.
WB		1/1000 - 1/10000. Detects a band of approximately 12 kDa (predicted molecular weight: 12 kDa).
IP		1/30 - 1/50.

## Target

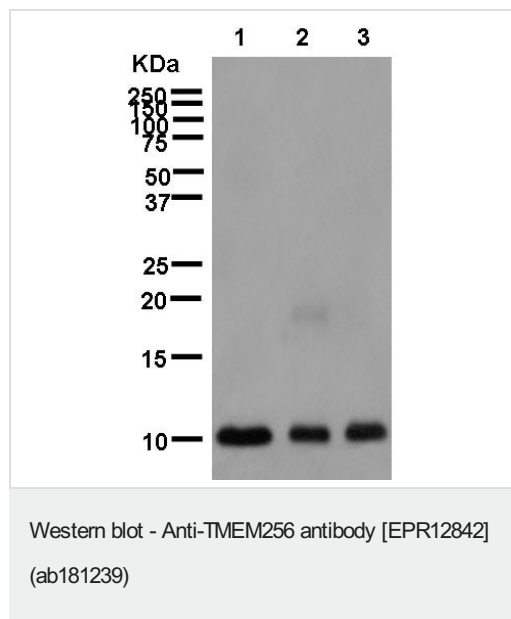
### Relevance

Belongs to the TMEM256 family.

### Cellular localization

Membrane; Multi-pass membrane protein

## Images



**All lanes** : Anti-TMEM256 antibody [EPR12842] (ab181239) at 1/10000 dilution

**Lane 1** : A549 cell lysate

**Lane 2** : Y79 cell lysate

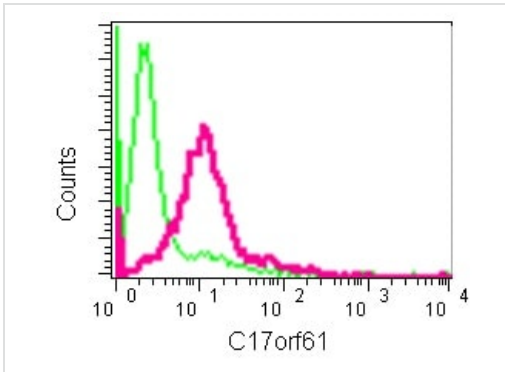
**Lane 3** : LnCaP cell lysate

Lysates/proteins at 20 µg per lane.

### Secondary

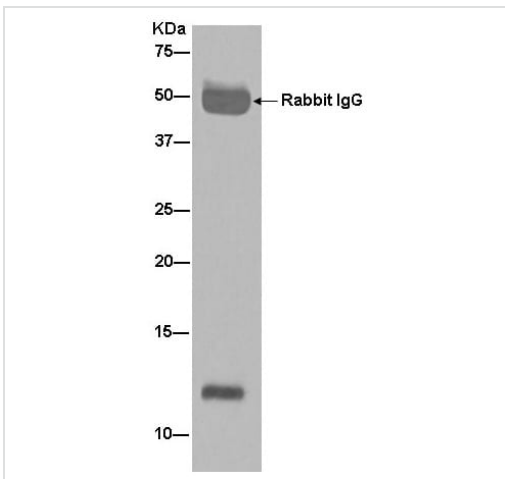
**All lanes** : Goat Anti-Rabbit IgG, (H+L), Peroxidase conjugated at 1/1000 dilution

**Predicted band size:** 12 kDa



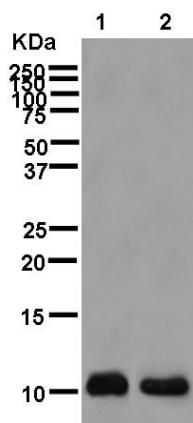
Flow Cytometry (Intracellular) - Anti-TMEM256 antibody [EPR12842] (ab181239)

Intracellular flow cytometric analysis of A549 cells (paraformaldehyde-fixed, 2%) labeling TMEM256 with ab181239 at 1/200 dilution (red) or a rabbit IgG (negative) (green), followed by Goat anti rabbit IgG (FITC) secondary at 1/150 dilution.



Immunoprecipitation - Anti-TMEM256 antibody [EPR12842] (ab181239)

Western blot analysis of immunoprecipitation pellet from A549 cell lysate immunoprecipitated using ab181239 at 1/50 dilution. Secondary: Goat Anti-Rabbit IgG, (H+L), Peroxidase conjugated at 1/1000 dilution.



Western blot - Anti-TMEM256 antibody [EPR12842] (ab181239)

**All lanes :** Anti-TMEM256 antibody [EPR12842] (ab181239) at 1/2000 dilution

**Lane 1 :** Human fetal liver lysate

**Lane 2 :** Human fetal kidney lysate

Lysates/proteins at 20 µg per lane.

**Secondary**

**All lanes :** Goat Anti-Rabbit IgG H&L (HRP) (**ab136636**) at 1/500 dilution

**Predicted band size:** 12 kDa

Why choose a recombinant antibody?



**Research with confidence**  
Consistent and reproducible results



**Long-term and scalable supply**  
Recombinant technology



**Success from the first experiment**  
Confirmed specificity



**Ethical standards compliant**  
Animal-free production

Anti-TMEM256 antibody [EPR12842] (ab181239)

**Please note:** All products are "FOR RESEARCH USE ONLY. NOT FOR USE IN DIAGNOSTIC PROCEDURES"

**Our Abpromise to you: Quality guaranteed and expert technical support**

- Replacement or refund for products not performing as stated on the datasheet
- Valid for 12 months from date of delivery
- Response to your inquiry within 24 hours
- We provide support in Chinese, English, French, German, Japanese and Spanish
- Extensive multi-media technical resources to help you
- We investigate all quality concerns to ensure our products perform to the highest standards

If the product does not perform as described on this datasheet, we will offer a refund or replacement. For full details of the Abpromise, please visit <https://www.abcam.com/abpromise> or contact our technical team.

## Terms and conditions

---

- Guarantee only valid for products bought direct from Abcam or one of our authorized distributors