

Product datasheet

Anti-Tmem27 antibody [EPR17748] ab200664

Recombinant **RabMAb**

[1 References](#) [10 Images](#)

Overview

Product name	Anti-Tmem27 antibody [EPR17748]
Description	Rabbit monoclonal [EPR17748] to Tmem27
Host species	Rabbit
Tested applications	Suitable for: Flow Cyt (Intra), ICC/IF, WB, IHC-P
Species reactivity	Reacts with: Mouse, Rat, Human
Immunogen	Synthetic peptide. This information is proprietary to Abcam and/or its suppliers.
Positive control	WB: Human pancreas and fetal kidney lysates; Mouse and rat kidney lysates. IHC-P: Human and rat kidney tissues. ICC/IF: HEK293 and BxPC-3 cells. Flow Cyt (intra): BxPC-3 cells.
General notes	<p>This product is a recombinant monoclonal antibody, which offers several advantages including:</p> <ul style="list-style-type: none"> - High batch-to-batch consistency and reproducibility - Improved sensitivity and specificity - Long-term security of supply - Animal-free production <p>For more information see here.</p> <p>Our RabMAb[®] technology is a patented hybridoma-based technology for making rabbit monoclonal antibodies. For details on our patents, please refer to RabMAb[®] patents.</p>

Properties

Form	Liquid
Storage instructions	Shipped at 4°C. Store at +4°C short term (1-2 weeks). Upon delivery aliquot. Store at -20°C long term. Avoid freeze / thaw cycle.
Storage buffer	<p>pH: 7.2</p> <p>Preservative: 0.01% Sodium azide</p> <p>Constituents: 59% PBS, 40% Glycerol (glycerin, glycerine), 0.05% BSA</p>
Purity	Protein A purified
Clonality	Monoclonal
Clone number	EPR17748
Isotype	IgG

Applications

The Abpromise guarantee

Our **Abpromise guarantee** covers the use of ab200664 in the following tested applications.

The application notes include recommended starting dilutions; optimal dilutions/concentrations should be determined by the end user.

Application	Abreviews	Notes
Flow Cyt (Intra)		1/100. ab172730 - Rabbit monoclonal IgG, is suitable for use as an isotype control with this antibody.
ICC/IF		1/500.
WB		1/1000. Detects a band of approximately 38 kDa (predicted molecular weight: 25 kDa).
IHC-P		1/10000. Perform heat mediated antigen retrieval with Tris/EDTA buffer pH 9.0 before commencing with IHC staining protocol.

Target

Function

Regulator of SNARE complex function. Stimulator of beta cell replication.

Tissue specificity

Kidney; collecting ducts. Pancreas; beta cells of islets.

Sequence similarities

Belongs to the TMEM27 family.

Post-translational modifications

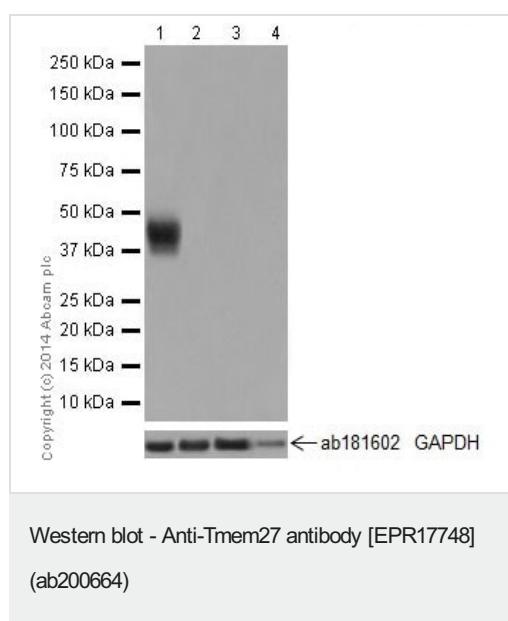
Glycosylated.

The extracellular domain is cleaved and released from the cell membrane of pancreatic beta cells.

Cellular localization

Membrane.

Images



All lanes : Anti-Tmem27 antibody [EPR17748] (ab200664) at 1/1000 dilution

Lane 1 : Human fetal kidney lysate

Lane 2 : Human fetal brain lysate

Lane 3 : Human fetal heart lysate

Lane 4 : Human fetal spleen lysate

Lysates/proteins at 10 µg per lane.

Secondary

All lanes : Anti-Rabbit IgG (HRP), specific to the non-reduced form of IgG at 1/1000 dilution

Predicted band size: 25 kDa

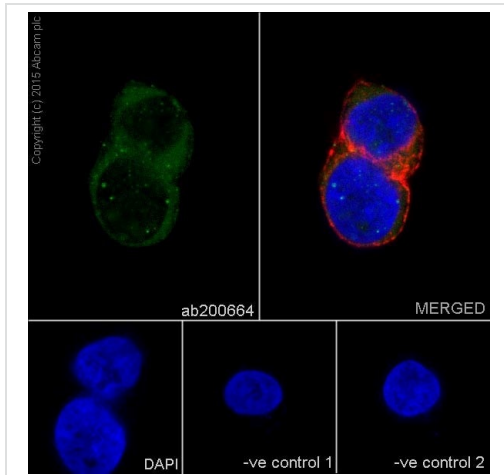
Observed band size: 38 kDa

Exposure time: 5 seconds

The observed MW is consistent with what has been described in the literature PMID:16330323.

Please note lanes 2-4 are negative controls for Tmem27.

Blocking/Dilution buffer: 5% NFDm/TBST.



Immunocytochemistry/ Immunofluorescence - Anti-Tmem27 antibody [EPR17748] (ab200664)

Immunofluorescent analysis of 4% paraformaldehyde-fixed, 0.1% Triton X-100 permeabilized HEK293 (Human embryonic kidney) cells labeling Tmem27 with ab200664 at 1/500 dilution, followed by Goat anti-rabbit IgG (Alexa Fluor® 488) (**ab150077**) secondary antibody at 1/500 dilution (green).

Cytoplasm staining on HEK293 cell line is observed.

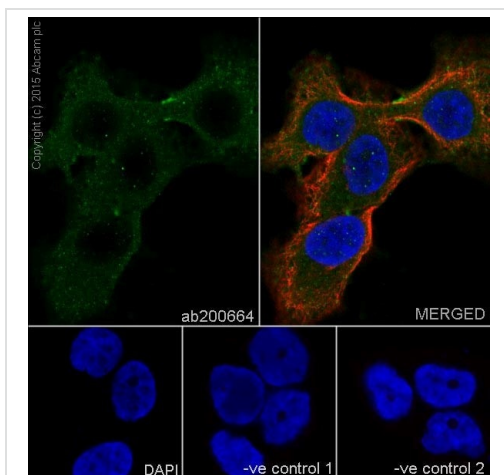
The nuclear counter stain is DAPI (blue).

Tubulin is detected with **ab7291** (anti-Tubulin mouse mAb) at 1/1000 dilution and **ab150120** (AlexaFluor®594 Goat anti-Mouse secondary) at 1/500 dilution (red).

The negative controls are as follows:

-ve control 1: ab200664 at 1/500 dilution followed by **ab150120** (AlexaFluor®594 Goat anti-Mouse secondary) at 1/500 dilution.

-ve control 2: **ab7291** (anti-Tubulin mouse mAb) at 1/1000 dilution followed by **ab150077** (Alexa Fluor®488 Goat Anti-Rabbit IgG H&L) at 1/500 dilution.



Immunocytochemistry/ Immunofluorescence - Anti-Tmem27 antibody [EPR17748] (ab200664)

Immunofluorescent analysis of 4% paraformaldehyde-fixed, 0.1% Triton X-100 permeabilized BxPC-3 (Human pancreas adenocarcinoma cells) cells labeling Tmem27 with ab200664 at 1/500 dilution, followed by Goat anti-rabbit IgG (Alexa Fluor® 488) (**ab150077**) secondary antibody at 1/500 dilution (green).

Cytoplasm staining on BxPC-3 cell line is observed.

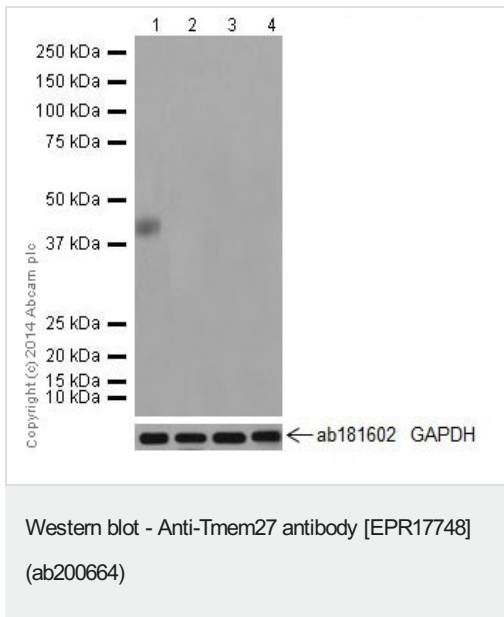
The nuclear counter stain is DAPI (blue).

Tubulin is detected with **ab7291** (anti-Tubulin mouse mAb) at 1/1000 dilution and **ab150120** (AlexaFluor®594 Goat anti-Mouse secondary) at 1/500 dilution (red).

The negative controls are as follows:

-ve control 1: ab200664 at 1/500 dilution followed by **ab150120** (AlexaFluor®594 Goat anti-Mouse secondary) at 1/500 dilution.

-ve control 2: **ab7291** (anti-Tubulin mouse mAb) at 1/1000 dilution followed by **ab150077** (Alexa Fluor®488 Goat Anti-Rabbit IgG H&L) at 1/500 dilution.



All lanes : Anti-Tmem27 antibody [EPR17748] (ab200664) at 1/1000 dilution

Lane 1 : Human pancreas lysate

Lane 2 : Human fetal brain lysate

Lane 3 : Human fetal heart lysate

Lane 4 : Human fetal spleen lysate

Lysates/proteins at 10 µg per lane.

Secondary

All lanes : Anti-Rabbit IgG (HRP), specific to the non-reduced form of IgG at 1/1000 dilution

Predicted band size: 25 kDa

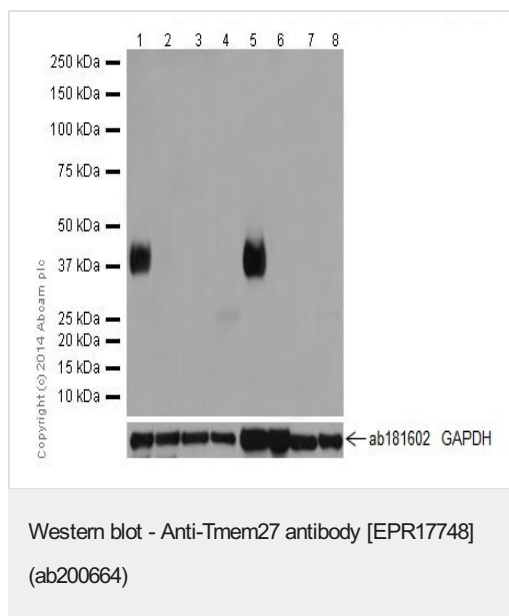
Observed band size: 38 kDa

Exposure time: 3 minutes

The observed MW is consistent with what has been described in the literature PMID:16330323.

Please note lanes 2-4 are negative controls for Tmem27.

Blocking/Dilution buffer: 5% NFDM/TBST.



All lanes : Anti-Tmem27 antibody [EPR17748] (ab200664) at 1/1000 dilution

Lane 1 : Mouse kidney lysate

Lane 2 : Mouse brain lysate

Lane 3 : Mouse heart lysate

Lane 4 : Mouse spleen lysate

Lane 5 : Rat kidney lysate

Lane 6 : Rat brain lysate

Lane 7 : Rat heart lysate

Lane 8 : Rat spleen lysate

Lysates/proteins at 10 µg per lane.

Secondary

All lanes : Goat Anti-Rabbit IgG, (H+L), Peroxidase conjugated at 1/1000 dilution

Predicted band size: 25 kDa

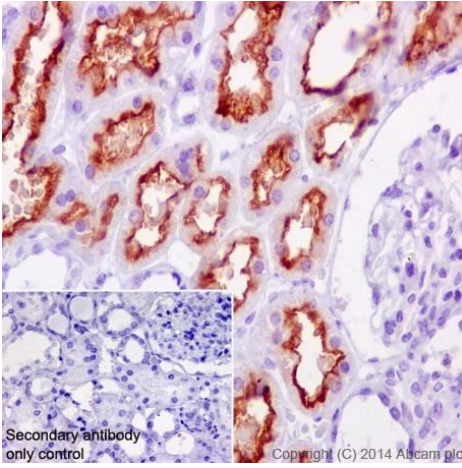
Observed band size: 38 kDa

Exposure time: 5 seconds

The observed MW is consistent with what has been described in the literature PMID:16330323.

Please note lanes 2-4 and 6-8 are negative controls for Tmem27.

Blocking/Dilution buffer: 5% NFDm/TBST.



Immunohistochemistry (Formalin/PFA-fixed paraffin-embedded sections) - Anti-Tmem27 antibody [EPR17748] (ab200664)

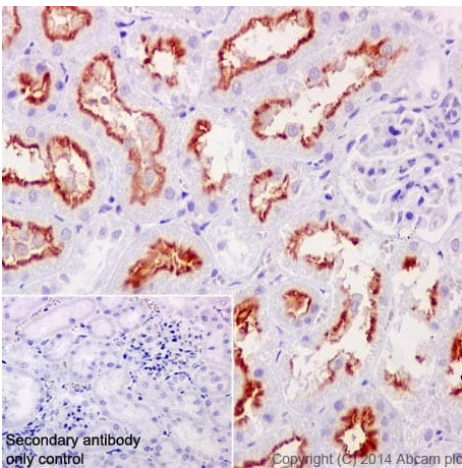
Immunohistochemical analysis of paraffin-embedded Human kidney tissue labeling Tmem27 with ab200664 at 1/10000 dilution, followed by Goat Anti-Rabbit IgG H&L (HRP) ([ab97051](#)) secondary antibody at 1/500 dilution.

Luminal surface and cytoplasm staining on Human kidney tissue is observed.

Counter stained with Hematoxylin.

Secondary antibody only control: Used PBS instead of primary antibody, secondary antibody is Goat Anti-Rabbit IgG H&L (HRP) ([ab97051](#)) at 1/500 dilution.

Perform heat mediated antigen retrieval with Tris/EDTA buffer pH 9.0 before commencing with IHC staining protocol.



Immunohistochemistry (Formalin/PFA-fixed paraffin-embedded sections) - Anti-Tmem27 antibody [EPR17748] (ab200664)

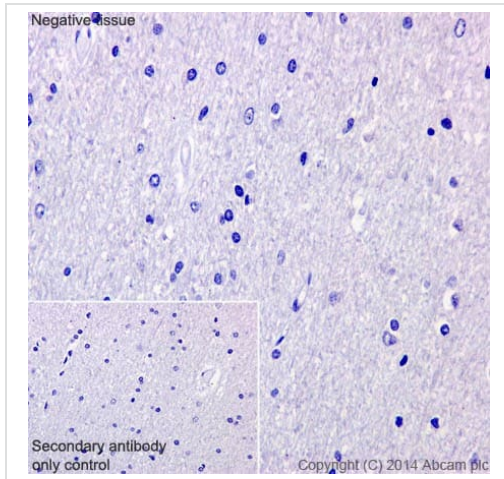
Immunohistochemical analysis of paraffin-embedded Rat kidney tissue labeling Tmem27 with ab200664 at 1/10000 dilution, followed by Goat Anti-Rabbit IgG H&L (HRP) ([ab97051](#)) secondary antibody at 1/500 dilution.

Luminal surface and cytoplasm staining on rat kidney tissue is observed.

Counter stained with Hematoxylin.

Secondary antibody only control: Used PBS instead of primary antibody, secondary antibody is Goat Anti-Rabbit IgG H&L (HRP) ([ab97051](#)) at 1/500 dilution.

Perform heat mediated antigen retrieval with Tris/EDTA buffer pH 9.0 before commencing with IHC staining protocol.



Immunohistochemistry (Formalin/PFA-fixed paraffin-embedded sections) - Anti-Tmem27 antibody [EPR17748] (ab200664)

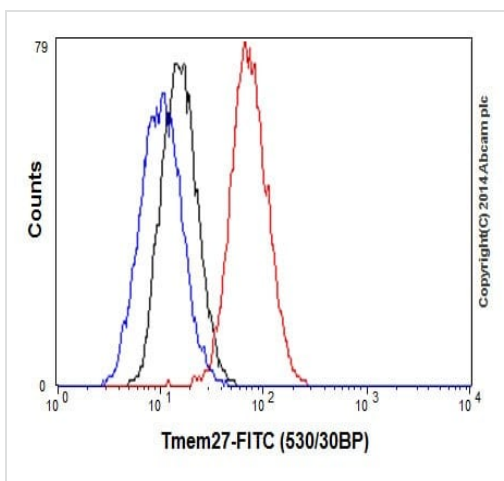
Immunohistochemical analysis of paraffin-embedded Human cerebral cortex tissue labeling Tmem27 with ab200664 at 1/10000 dilution, followed by Goat Anti-Rabbit IgG H&L (HRP) (**ab97051**) secondary antibody at 1/500 dilution.

No staining on Human cerebral cortex tissue is observed (Negative control for Tmem27).

Counter stained with Hematoxylin.

Secondary antibody only control: Used PBS instead of primary antibody, secondary antibody is Goat Anti-Rabbit IgG H&L (HRP) (**ab97051**) at 1/500 dilution.

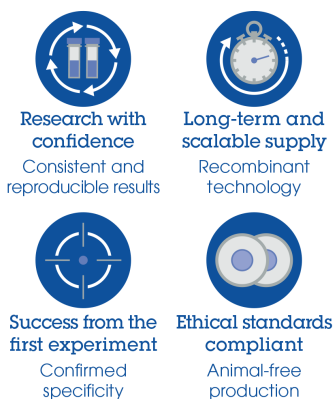
Perform heat mediated antigen retrieval with Tris/EDTA buffer pH 9.0 before commencing with IHC staining protocol.



Flow Cytometry (Intracellular) - Anti-Tmem27 antibody [EPR17748] (ab200664)

Intracellular flow cytometric analysis of 2% paraformaldehyde-fixed BxPC-3 (Human pancreas adenocarcinoma cells) cells labeling Tmem27 with ab200664 at 1/100 dilution (red) compared with a rabbit monoclonal IgG isotype control (**ab172730**;black) and an unlabelled control (cells without incubation with primary antibody and secondary antibody; blue). Goat anti rabbit IgG (FITC) at 1/150 dilution was used as the secondary antibody.

Why choose a recombinant antibody?



Anti-Tmem27 antibody [EPR17748] (ab200664)

Please note: All products are "FOR RESEARCH USE ONLY. NOT FOR USE IN DIAGNOSTIC PROCEDURES"

Our Abpromise to you: Quality guaranteed and expert technical support

- Replacement or refund for products not performing as stated on the datasheet
- Valid for 12 months from date of delivery
- Response to your inquiry within 24 hours

- We provide support in Chinese, English, French, German, Japanese and Spanish
- Extensive multi-media technical resources to help you
- We investigate all quality concerns to ensure our products perform to the highest standards

If the product does not perform as described on this datasheet, we will offer a refund or replacement. For full details of the Abpromise, please visit <https://www.abcam.com/abpromise> or contact our technical team.

Terms and conditions

- Guarantee only valid for products bought direct from Abcam or one of our authorized distributors