


## Product datasheet

### Anti-TMEM66/SARAF antibody ab154538

★★★★★ [1 Abreviews](#) [1 References](#) [3 Images](#)

#### Overview

<b>Product name</b>	Anti-TMEM66/SARAF antibody
<b>Description</b>	Rabbit polyclonal to TMEM66/SARAF
<b>Host species</b>	Rabbit
<b>Tested applications</b>	<b>Suitable for:</b> WB, IHC-P, ICC/IF
<b>Species reactivity</b>	<b>Reacts with:</b> Human <b>Predicted to work with:</b> Mouse 
<b>Immunogen</b>	Recombinant fragment corresponding to Human TMEM66/SARAF aa 1-211. Database link: <a href="#">Q96BY9</a>
<b>Positive control</b>	293T, Jurkat, Raji whole cell lysate; Human hepatoma tissue; HeLa cells
<b>General notes</b>	<p>The Life Science industry has been in the grips of a reproducibility crisis for a number of years. Abcam is leading the way in addressing this with our range of recombinant monoclonal antibodies and knockout edited cell lines for gold-standard validation. Please check that this product meets your needs before purchasing.</p> <p>If you have any questions, special requirements or concerns, please send us an inquiry and/or contact our Support team ahead of purchase. Recommended alternatives for this product can be found below, along with publications, customer reviews and Q&amp;As</p>

#### Properties

<b>Form</b>	Liquid
<b>Storage instructions</b>	Shipped at 4°C. Upon delivery aliquot. Store at -20°C or -80°C. Avoid freeze / thaw cycle.
<b>Storage buffer</b>	pH: 7.00 Preservative: 0.01% Thimerosal (merthiolate) Constituents: 78.99% PBS, 1% BSA, 20% Glycerol (glycerin, glycerine)
<b>Purity</b>	Immunogen affinity purified
<b>Clonality</b>	Polyclonal
<b>Isotype</b>	IgG

#### Applications

## The Abpromise guarantee

Our **Abpromise guarantee** covers the use of ab154538 in the following tested applications.

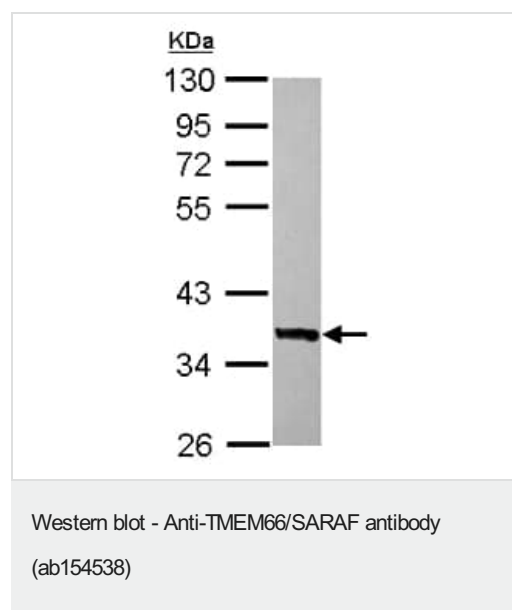
The application notes include recommended starting dilutions; optimal dilutions/concentrations should be determined by the end user.

Application	Abreviews	Notes
WB	★★★★★ (1)	1/500 - 1/3000. Predicted molecular weight: 37 kDa.
IHC-P		1/100 - 1/1000. Perform heat mediated antigen retrieval with citrate buffer pH 6 before commencing with IHC staining protocol.
ICC/IF		1/100 - 1/1000.

## Target

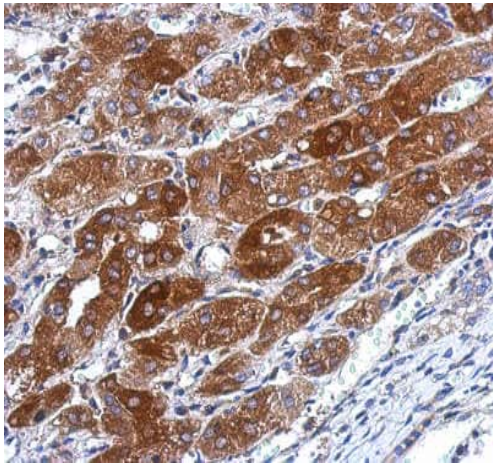
Tissue specificity	Highly expressed in macrophages.
Sequence similarities	Belongs to the TMEM66 family.
Cellular localization	Membrane.

## Images



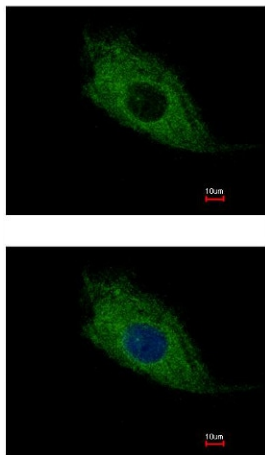
Anti-TMEM66/SARAF antibody (ab154538) at 1/1000 dilution + Jurkat whole cell lysate at 30 µg

**Predicted band size:** 37 kDa



Immunohistochemical analysis of paraffin-embedded Human hepatoma tissue labeling TMEM66/SARAF with ab154538 at 1/500 dilution.

Immunohistochemistry (Formalin/PFA-fixed paraffin-embedded sections) - Anti-TMEM66/SARAF antibody (ab154538)



Immunofluorescent analysis of methanol-fixed HeLa cells labeling TMEM66/SARAF with ab154538 at 1/500 dilution. Lower panel co-stained with Hoechst 33342.

Immunocytochemistry/ Immunofluorescence - Anti-TMEM66/SARAF antibody (ab154538)

**Please note:** All products are "FOR RESEARCH USE ONLY. NOT FOR USE IN DIAGNOSTIC PROCEDURES"

**Our Abpromise to you: Quality guaranteed and expert technical support**

- 
- Replacement or refund for products not performing as stated on the datasheet
  - Valid for 12 months from date of delivery
  - Response to your inquiry within 24 hours
  
  - We provide support in Chinese, English, French, German, Japanese and Spanish
  - Extensive multi-media technical resources to help you
  - We investigate all quality concerns to ensure our products perform to the highest standards

If the product does not perform as described on this datasheet, we will offer a refund or replacement. For full details of the Abpromise, please visit <https://www.abcam.com/abpromise> or contact our technical team.

#### **Terms and conditions**

---

- Guarantee only valid for products bought direct from Abcam or one of our authorized distributors