


Product datasheet

Anti-TMEM68 antibody ab236862

[2 Images](#)

Overview

Product name	Anti-TMEM68 antibody
Description	Rabbit polyclonal to TMEM68
Host species	Rabbit
Tested applications	Suitable for: ICC/IF, WB
Species reactivity	Reacts with: Mouse, Human Predicted to work with: Cow 
Immunogen	Recombinant fragment corresponding to Human TMEM68 aa 74-114. Database link: Q96MH6
Positive control	WB: Mouse thymus lysate; K562, U-251 MG, HepG2, MCF7 and Jurkat cell lysate. ICC/IF: HeLa cells.
General notes	<p>The Life Science industry has been in the grips of a reproducibility crisis for a number of years. Abcam is leading the way in addressing this with our range of recombinant monoclonal antibodies and knockout edited cell lines for gold-standard validation. Please check that this product meets your needs before purchasing.</p> <p>If you have any questions, special requirements or concerns, please send us an inquiry and/or contact our Support team ahead of purchase. Recommended alternatives for this product can be found below, along with publications, customer reviews and Q&As</p>

Properties

Form	Liquid
Storage instructions	Shipped at 4°C. Store at +4°C short term (1-2 weeks). Upon delivery aliquot. Store at -20°C long term. Avoid freeze / thaw cycle.
Storage buffer	pH: 7.40 Preservative: 0.03% Proclin 300 Constituents: 50% Glycerol (glycerin, glycerine), PBS
Purity	Protein G purified
Purification notes	Purity >95%.
Clonality	Polyclonal
Isotype	IgG

Applications

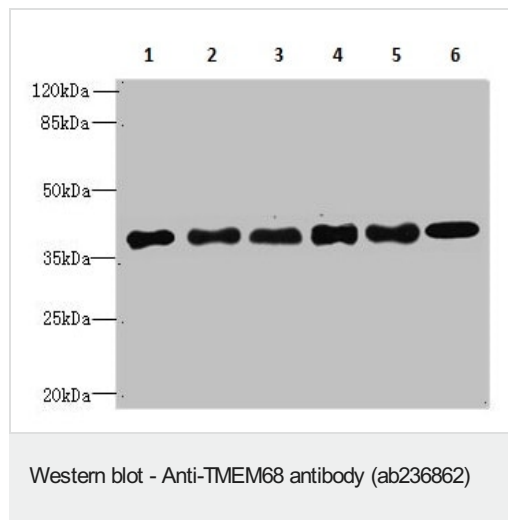
The Abpromise guarantee Our **Abpromise guarantee** covers the use of ab236862 in the following tested applications. The application notes include recommended starting dilutions; optimal dilutions/concentrations should be determined by the end user.

Application	Abreviews	Notes
ICC/IF		1/50 - 1/200.
WB		1/1000 - 1/5000. Predicted molecular weight: 37 kDa.

Target

Cellular localization Membrane.

Images



All lanes : Anti-TMEM68 antibody (ab236862) at 1/1000 dilution

Lane 1 : Mouse thymus lysate

Lane 2 : K562 (human chronic myelogenous leukemia cell line from bone marrow) whole cell lysate

Lane 3 : U-251 MG (human brain glioma cell line) whole cell lysate

Lane 4 : HepG2 (human liver hepatocellular carcinoma cell line) whole cell lysate

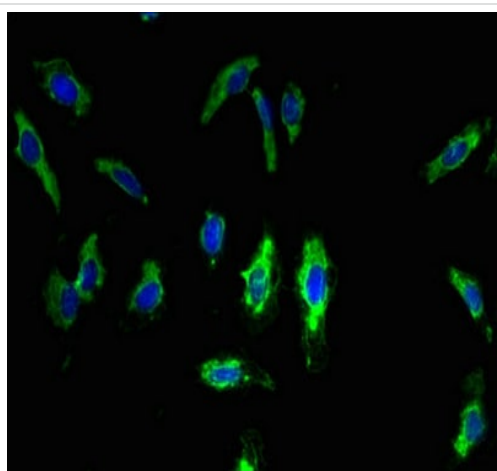
Lane 5 : MCF7 (human breast adenocarcinoma cell line) whole cell lysate

Lane 6 : Jurkat (human T cell leukemia cell line from peripheral blood) whole cell lysate

Secondary

All lanes : Goat polyclonal to rabbit IgG at 1/10000 dilution

Predicted band size: 37 kDa



Immunocytochemistry/ Immunofluorescence - Anti-TMEM68 antibody (ab236862)

HeLa (human epithelial cell line from cervix adenocarcinoma) cells labeling TMEM68 using ab236862 at 1/100 dilution in ICC/IF.

Secondary antibody was Alexa Fluor® 488-conjugated goat anti-rabbit IgG (H+L).

Please note: All products are "FOR RESEARCH USE ONLY. NOT FOR USE IN DIAGNOSTIC PROCEDURES"

Our Abpromise to you: Quality guaranteed and expert technical support

- Replacement or refund for products not performing as stated on the datasheet
- Valid for 12 months from date of delivery
- Response to your inquiry within 24 hours
- We provide support in Chinese, English, French, German, Japanese and Spanish
- Extensive multi-media technical resources to help you
- We investigate all quality concerns to ensure our products perform to the highest standards

If the product does not perform as described on this datasheet, we will offer a refund or replacement. For full details of the Abpromise, please visit <https://www.abcam.com/abpromise> or contact our technical team.

Terms and conditions

- Guarantee only valid for products bought direct from Abcam or one of our authorized distributors