

Anti-TMEM70 antibody ab106654

[2 References](#) [1 Image](#)

Overview

Product name	Anti-TMEM70 antibody
Description	Rabbit polyclonal to TMEM70
Host species	Rabbit
Specificity	Two isoforms of TMEM70 are known to exist; ab106654 will only recognize Isoform 1. ab106654 is predicted not to cross-react with other TMEM proteins.
Tested applications	Suitable for: IHC-P, WB
Species reactivity	Reacts with: Human
Immunogen	Synthetic peptide corresponding to Human TMEM70 (internal sequence). The immunogen is located within amino acids 150 - 200 (14 amino acid synthetic peptide) of TMEM70. Database link: Q9BUB7
Positive control	WB: Human liver tissue lysate.
General notes	<p>The Life Science industry has been in the grips of a reproducibility crisis for a number of years. Abcam is leading the way in addressing this with our range of recombinant monoclonal antibodies and knockout edited cell lines for gold-standard validation. Please check that this product meets your needs before purchasing.</p> <p>If you have any questions, special requirements or concerns, please send us an inquiry and/or contact our Support team ahead of purchase. Recommended alternatives for this product can be found below, along with publications, customer reviews and Q&As</p>

Properties

Form	Liquid
Storage instructions	Shipped at 4°C. Store at 4°C (stable for up to 12 months).
Storage buffer	pH: 7.2 Preservative: 0.02% Sodium azide Constituent: PBS
Purity	Immunogen affinity purified
Clonality	Polyclonal
Isotype	IgG

Applications

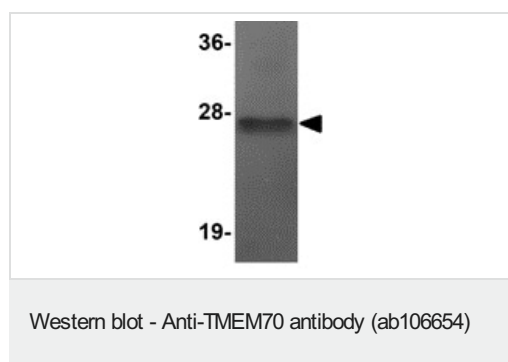
The **Abpromise guarantee** Our **Abpromise guarantee** covers the use of ab106654 in the following tested applications. The application notes include recommended starting dilutions; optimal dilutions/concentrations should be determined by the end user.

Application	Abreviews	Notes
IHC-P		Use a concentration of 5 µg/ml. Validated in rat samples only.
WB		Use a concentration of 1 - 2 µg/ml. Predicted molecular weight: 29 kDa. Validated in human samples only.
IF		Use a concentration of 20 µg/ml. Validated in rat samples only.

Target

Function	Involved in biogenesis of mitochondrial ATP synthase.
Involvement in disease	Defects in TMEM70 are a cause of mitochondrial encephalomyopathy neonatal due to ATP synthase deficiency (MT-ATPSD) [MIM:604273]; also known as ATPase deficiency. A mitochondrial disorder with heterogeneous clinical manifestations including dysmorphic features, psychomotor retardation, hypotonia, growth retardation, cardiomyopathy, enlarged liver, hypoplastic kidneys and elevated lactate levels in urine, plasma and cerebrospinal fluid.
Sequence similarities	Belongs to the TMEM70 family.
Cellular localization	Mitochondrion inner membrane.

Images



Anti-TMEM70 antibody (ab106654) at 1 µg/ml + Human liver tissue lysate at 15 µg

Predicted band size: 29 kDa

Please note: All products are "FOR RESEARCH USE ONLY. NOT FOR USE IN DIAGNOSTIC PROCEDURES"

Our Abpromise to you: Quality guaranteed and expert technical support

- Replacement or refund for products not performing as stated on the datasheet
- Valid for 12 months from date of delivery
- Response to your inquiry within 24 hours
- We provide support in Chinese, English, French, German, Japanese and Spanish

- Extensive multi-media technical resources to help you
- We investigate all quality concerns to ensure our products perform to the highest standards

If the product does not perform as described on this datasheet, we will offer a refund or replacement. For full details of the Abpromise, please visit <https://www.abcam.com/abpromise> or contact our technical team.

Terms and conditions

- Guarantee only valid for products bought direct from Abcam or one of our authorized distributors