


## Product datasheet

### Anti-TMLHE antibody ab97842

1 Image

#### Overview

<b>Product name</b>	Anti-TMLHE antibody
<b>Description</b>	Rabbit polyclonal to TMLHE
<b>Host species</b>	Rabbit
<b>Tested applications</b>	<b>Suitable for:</b> WB
<b>Species reactivity</b>	<b>Reacts with:</b> Human <b>Predicted to work with:</b> Mouse, Rat, Cow 
<b>Immunogen</b>	Recombinant fragment corresponding to Human TMLHE aa 100-400. NP_060666 Database link: <a href="#">Q9NVH6-1</a>
<b>Positive control</b>	HeLaS3 whole cells lysate; HepG2 and H1299 cells
<b>General notes</b>	<p>The Life Science industry has been in the grips of a reproducibility crisis for a number of years. Abcam is leading the way in addressing this with our range of recombinant monoclonal antibodies and knockout edited cell lines for gold-standard validation. Please check that this product meets your needs before purchasing.</p> <p>If you have any questions, special requirements or concerns, please send us an inquiry and/or contact our Support team ahead of purchase. Recommended alternatives for this product can be found below, along with publications, customer reviews and Q&amp;As</p>

#### Properties

<b>Form</b>	Liquid
<b>Storage instructions</b>	Shipped at 4°C. Upon delivery aliquot and store at -20°C or -80°C. Avoid repeated freeze / thaw cycles.
<b>Storage buffer</b>	pH: 7.00 Preservative: 0.01% Thimerosal (merthiolate) Constituents: 1.21% Tris, 0.75% Glycine, 10% Glycerol (glycerin, glycerine)
<b>Purity</b>	Protein A purified
<b>Clonality</b>	Polyclonal
<b>Isotype</b>	IgG

#### Applications

## The Abpromise guarantee

Our **Abpromise guarantee** covers the use of ab97842 in the following tested applications.

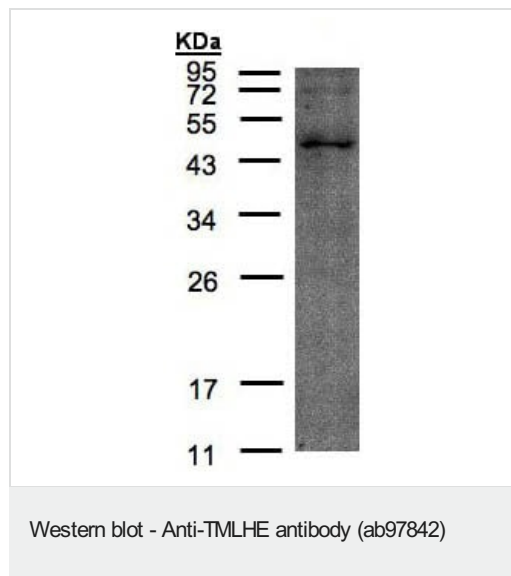
The application notes include recommended starting dilutions; optimal dilutions/concentrations should be determined by the end user.

Application	Abreviews	Notes
WB		1/100 - 1/1000. Predicted molecular weight: 50 kDa.

## Target

Function	Converts trimethyllysine (TML) into hydroxytrimethyllysine (HTML).
Tissue specificity	All isoforms, but isoform 8, are widely expressed in adult and fetal tissues. Isoform 8 is restricted to heart and skeletal muscle.
Pathway	Amine and polyamine biosynthesis; carnitine biosynthesis.
Involvement in disease	Autism, X-linked 6
Sequence similarities	Belongs to the gamma-BBH/TMLD family.
Cellular localization	Mitochondrion matrix.

## Images



Anti-TMLHE antibody (ab97842) at 1/200 dilution + HeLaS3 whole cell lysate at 30 µg

**Predicted band size:** 50 kDa

12% SDS PAGE

**Please note:** All products are "FOR RESEARCH USE ONLY. NOT FOR USE IN DIAGNOSTIC PROCEDURES"

## Our Abpromise to you: Quality guaranteed and expert technical support

- Replacement or refund for products not performing as stated on the datasheet
- Valid for 12 months from date of delivery
- Response to your inquiry within 24 hours
- We provide support in Chinese, English, French, German, Japanese and Spanish

- Extensive multi-media technical resources to help you
- We investigate all quality concerns to ensure our products perform to the highest standards

If the product does not perform as described on this datasheet, we will offer a refund or replacement. For full details of the Abpromise, please visit <https://www.abcam.com/abpromise> or contact our technical team.

#### **Terms and conditions**

---

- Guarantee only valid for products bought direct from Abcam or one of our authorized distributors