




Product datasheet

Anti-TOM70 antibody ab233407

4 Images

Overview

Product name	Anti-TOM70 antibody
Description	Rabbit polyclonal to TOM70
Host species	Rabbit
Tested applications	Suitable for: WB, IHC-P
Species reactivity	Reacts with: Mouse, Human, Pig Predicted to work with: Rat 
Immunogen	Recombinant fragment (His-T7-tag) corresponding to Human TOM70 aa 300 to the C-terminus. (Expressed in E.coli). Database link: O94826  Run BLAST with  Run BLAST with
Positive control	IHC-P: Human cerebrum and liver tissues. WB: Pig brain, liver and heart lysates; Mouse brain lysate; Recombinant human TOM70 protein.
General notes	<p>The Life Science industry has been in the grips of a reproducibility crisis for a number of years. Abcam is leading the way in addressing this with our range of recombinant monoclonal antibodies and knockout edited cell lines for gold-standard validation. Please check that this product meets your needs before purchasing.</p> <p>If you have any questions, special requirements or concerns, please send us an inquiry and/or contact our Support team ahead of purchase. Recommended alternatives for this product can be found below, along with publications, customer reviews and Q&As</p>

Properties

Form	Liquid
Storage instructions	Shipped at 4°C. Store at +4°C short term (1-2 weeks). Upon delivery aliquot. Store at -20°C long term. Avoid freeze / thaw cycle.
Storage buffer	pH: 7.40 Preservative: 0.011% Proclin 300 Constituents: 55.77% Glycerol (glycerin, glycerine), 44.219% PBS
Purity	Immunogen affinity purified
Purification notes	ab233407 was purified by antigen-specific affinity chromatography followed by Protein A affinity chromatography.

Clonality	Polyclonal
Isotype	IgG

Applications

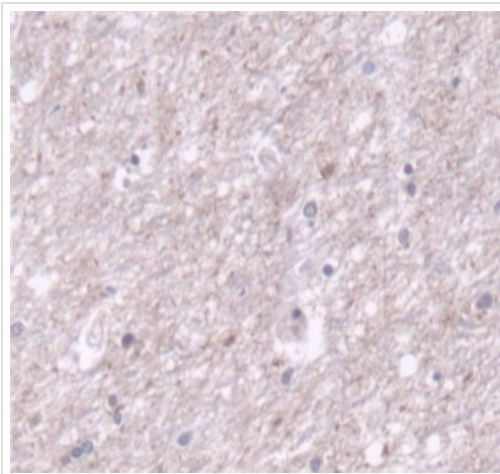
The Abpromise guarantee Our **Abpromise guarantee** covers the use of ab233407 in the following tested applications. The application notes include recommended starting dilutions; optimal dilutions/concentrations should be determined by the end user.

Application	Abreviews	Notes
WB		Use a concentration of 5 - 20 µg/ml. Predicted molecular weight: 67 kDa.
IHC-P		Use a concentration of 0.5 - 20 µg/ml.

Target

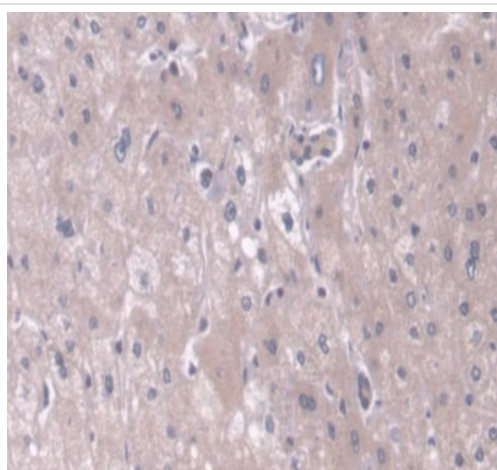
Function	Receptor that accelerates the import of all mitochondrial precursor proteins.
Sequence similarities	Belongs to the Tom70 family. Contains 10 TPR repeats.
Cellular localization	Mitochondrion outer membrane.

Images



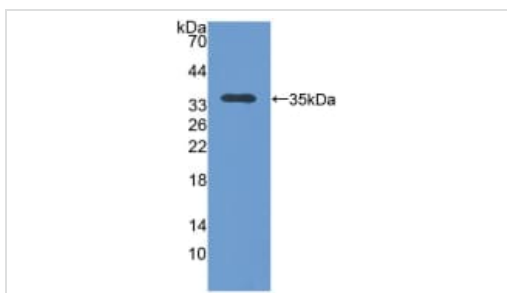
Paraffin-embedded human cerebrum tissue stained for TOM70 using ab233407 at 20 µg/ml in immunohistochemical analysis. DAB staining.

Immunohistochemistry (Formalin/PFA-fixed paraffin-embedded sections) - Anti-TOM70 antibody (ab233407)



Immunohistochemistry (Formalin/PFA-fixed paraffin-embedded sections) - Anti-TOM70 antibody (ab233407)

Paraffin-embedded human liver tissue stained for TOM70 using ab233407 at 20 µg/ml in immunohistochemical analysis. DAB staining.



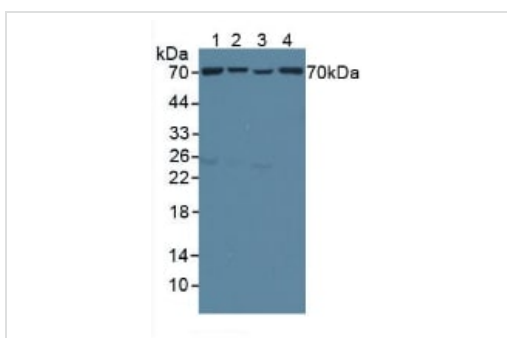
Western blot - Anti-TOM70 antibody (ab233407)

Anti-TOM70 antibody (ab233407) at 1 µg/ml + Recombinant human TOM70 protein

Secondary

HRP-Linked Guinea pig Anti-Rabbit at 1/2000 dilution

Predicted band size: 67 kDa



Western blot - Anti-TOM70 antibody (ab233407)

All lanes : Anti-TOM70 antibody (ab233407) at 1 µg/ml

Lane 1 : Pig brain lysate

Lane 2 : Pig liver lysate

Lane 3 : Pig heart lysate

Lane 4 : Mouse brain lysate

Secondary

All lanes : HRP-Linked Guinea pig Anti-Rabbit at 1/2000 dilution

Predicted band size: 67 kDa

Our Abpromise to you: Quality guaranteed and expert technical support

- Replacement or refund for products not performing as stated on the datasheet
- Valid for 12 months from date of delivery
- Response to your inquiry within 24 hours

- We provide support in Chinese, English, French, German, Japanese and Spanish
- Extensive multi-media technical resources to help you
- We investigate all quality concerns to ensure our products perform to the highest standards

If the product does not perform as described on this datasheet, we will offer a refund or replacement. For full details of the Abpromise, please visit <https://www.abcam.com/abpromise> or contact our technical team.

Terms and conditions

- Guarantee only valid for products bought direct from Abcam or one of our authorized distributors