

Product datasheet

Anti-TOP1MT antibody ab121681

[2 Images](#)

Overview

Product name	Anti-TOP1MT antibody
Description	Rabbit polyclonal to TOP1MT
Host species	Rabbit
Tested applications	Suitable for: WB, IHC-P
Species reactivity	Reacts with: Human
Immunogen	antigen sequence, corresponding to amino acids 40-143 of Human TOP1MT.
Positive control	Human colon tissue; RT 4, U 251 MG and Human Plasma lysates.
General notes	<p>The Life Science industry has been in the grips of a reproducibility crisis for a number of years. Abcam is leading the way in addressing this with our range of recombinant monoclonal antibodies and knockout edited cell lines for gold-standard validation. Please check that this product meets your needs before purchasing.</p> <p>If you have any questions, special requirements or concerns, please send us an inquiry and/or contact our Support team ahead of purchase. Recommended alternatives for this product can be found below, along with publications, customer reviews and Q&As</p>

Properties

Form	Liquid
Storage instructions	Shipped at 4°C. Upon delivery aliquot and store at -20°C. Avoid freeze / thaw cycles.
Storage buffer	pH: 7.20 Preservative: 0.02% Sodium azide Constituents: 59% PBS, 40% Glycerol (glycerin, glycerine)
Purity	Immunogen affinity purified
Clonality	Polyclonal
Isotype	IgG

Applications

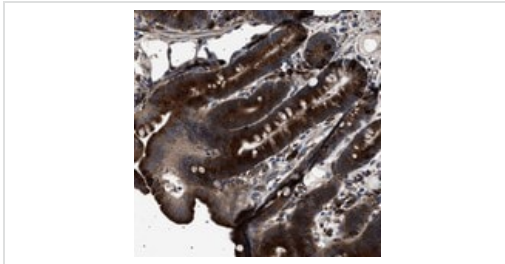
The Abpromise guarantee Our **Abpromise guarantee** covers the use of ab121681 in the following tested applications. The application notes include recommended starting dilutions; optimal dilutions/concentrations should be determined by the end user.

Application	Abreviews	Notes
WB		1/250 - 1/500.
IHC-P		1/50 - 1/200. Perform heat mediated antigen retrieval with citrate buffer pH 6 before commencing with IHC staining protocol.

Target

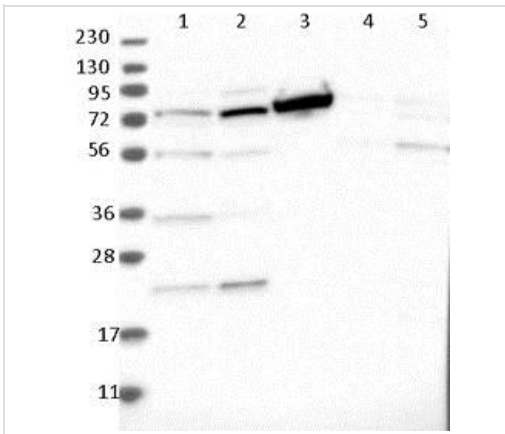
Function	Relieves DNA strain that arise during duplication of mitochondrial DNA.
Tissue specificity	Ubiquitous; highest in skeletal muscle, heart, brain and fetal liver.
Sequence similarities	Belongs to the eukaryotic type I topoisomerase family.
Cellular localization	Mitochondrion.

Images



ab121681 at 1/175 dilution staining TOP1MT in Paraffin-embedded Human Colon tissue by Immunohistochemistry

Immunohistochemistry (Formalin/PFA-fixed paraffin-embedded sections) - Anti-TOP1MT antibody (ab121681)



All lanes : Anti-TOP1MT antibody (ab121681) at 1/250 dilution

Lane 1 : RT 4 lysate

Lane 2 : U251 MG lysate

Lane 3 : Human plasma lysate

Lane 4 : Human liver lysate

Lane 5 : Human tonsil lysate

Developed using the ECL technique.

Western blot - Anti-TOP1MT antibody (ab121681)

Please note: All products are "FOR RESEARCH USE ONLY. NOT FOR USE IN DIAGNOSTIC PROCEDURES"

Our Abpromise to you: Quality guaranteed and expert technical support

- Replacement or refund for products not performing as stated on the datasheet
- Valid for 12 months from date of delivery
- Response to your inquiry within 24 hours

- We provide support in Chinese, English, French, German, Japanese and Spanish
- Extensive multi-media technical resources to help you
- We investigate all quality concerns to ensure our products perform to the highest standards

If the product does not perform as described on this datasheet, we will offer a refund or replacement. For full details of the Abpromise, please visit <https://www.abcam.com/abpromise> or contact our technical team.

Terms and conditions

- Guarantee only valid for products bought direct from Abcam or one of our authorized distributors