


Product datasheet

Anti-Topoisomerase II alpha antibody ab12318

★★★★☆ [1 Abreviews](#) [15 References](#) [2 Images](#)

Overview

Product name	Anti-Topoisomerase II alpha antibody
Description	Rabbit polyclonal to Topoisomerase II alpha
Host species	Rabbit
Tested applications	Suitable for: IHC-P, IP
Species reactivity	Reacts with: Human Predicted to work with: Mouse, Chimpanzee, Rhesus monkey, Gorilla, Orangutan 
Immunogen	Synthetic peptide representing a portion of human DNA topoisomerase II, alpha isozyme encoded within exon 35 (LocusLink ID 7153).
Positive control	HeLa cells. IHC-P: FFPE human testis tissue sections.
General notes	<p>The Life Science industry has been in the grips of a reproducibility crisis for a number of years. Abcam is leading the way in addressing this with our range of recombinant monoclonal antibodies and knockout edited cell lines for gold-standard validation. Please check that this product meets your needs before purchasing.</p> <p>If you have any questions, special requirements or concerns, please send us an inquiry and/or contact our Support team ahead of purchase. Recommended alternatives for this product can be found below, along with publications, customer reviews and Q&As</p>

Properties

Form	Liquid
Storage instructions	Shipped at 4°C. Upon delivery aliquot and store at -20°C. Avoid freeze / thaw cycles.
Storage buffer	pH: 7 Preservative: 0.1% Sodium azide Constituents: 0.021% PBS, 1.764% Sodium citrate, 1.815% Tris
Purity	Immunogen affinity purified
Purification notes	Purified using the peptide immobilized on solid support.
Clonality	Polyclonal
Isotype	IgG

Applications

Applications

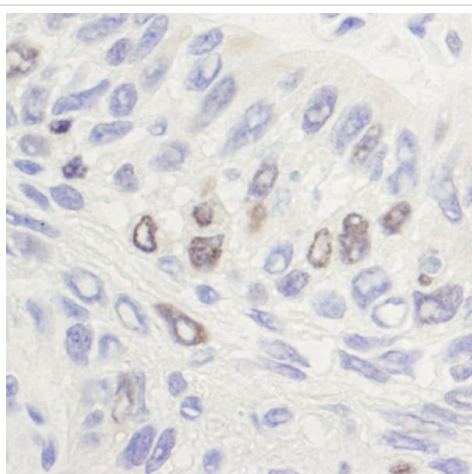
The Abpromise guarantee Our **Abpromise guarantee** covers the use of ab12318 in the following tested applications. The application notes include recommended starting dilutions; optimal dilutions/concentrations should be determined by the end user.

Application	Abreviews	Notes
IHC-P		1/500 - 1/2000. Perform heat mediated antigen retrieval with citrate buffer pH 6 before commencing with IHC staining protocol.
IP		Use at 2-10 µg/mg of lysate.

Target

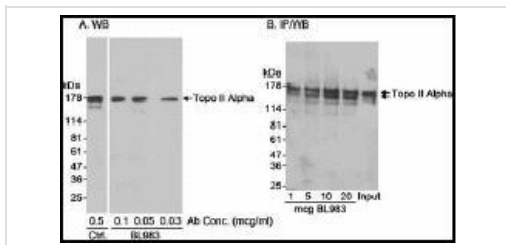
Function	Control of topological states of DNA by transient breakage and subsequent rejoining of DNA strands. Topoisomerase II makes double-strand breaks.
Sequence similarities	Belongs to the type II topoisomerase family.
Post-translational modifications	Phosphorylation has no effect on catalytic activity.
Cellular localization	Cytoplasm. Nucleus > nucleoplasm. Generally located in the nucleoplasm.

Images



Immunohistochemistry (Formalin/PFA-fixed paraffin-embedded sections) analysis of human laryngeal squamous cell carcinoma labelling Topoisomerase II alpha with ab12318 at 1/1000 (1 µg/ml).
Detection: DAB.

Immunohistochemistry (Formalin/PFA-fixed paraffin-embedded sections) - Anti-Topoisomerase II alpha antibody (ab12318)



Immunoprecipitation - Anti-Topoisomerase II alpha antibody (ab12318)

Detection of Human Topo II Alpha by Western Blot and Immunoprecipitation.

Samples:

Whole cell lysate (25 mcg/lane for A; 0.5 mg for IP in B; 25 mcg for Input in B) from HeLa cells. *Antibodies:* Affinity purified rabbit anti-Topo II alpha antibody BL983 used at the indicated concentrations for WB (A) and IP (B). Control antibody (Ctrl. in A) and antibody for WB of immunoprecipitated Topo II alpha was a monoclonal antibody to Topo II alpha from another source. *Detection:* Chemiluminescence with exposure times of 5 minutes (A) or 30 seconds (B).

Please note: All products are "FOR RESEARCH USE ONLY. NOT FOR USE IN DIAGNOSTIC PROCEDURES"

Our Abpromise to you: Quality guaranteed and expert technical support

- Replacement or refund for products not performing as stated on the datasheet
- Valid for 12 months from date of delivery
- Response to your inquiry within 24 hours
- We provide support in Chinese, English, French, German, Japanese and Spanish
- Extensive multi-media technical resources to help you
- We investigate all quality concerns to ensure our products perform to the highest standards

If the product does not perform as described on this datasheet, we will offer a refund or replacement. For full details of the Abpromise, please visit <https://www.abcam.com/abpromise> or contact our technical team.

Terms and conditions

- Guarantee only valid for products bought direct from Abcam or one of our authorized distributors