

Anti-Topoisomerase II alpha antibody [TOP2A/1362] ab219321

[5 Images](#)

Overview

Product name	Anti-Topoisomerase II alpha antibody [TOP2A/1362]
Description	Mouse monoclonal [TOP2A/1362] to Topoisomerase II alpha
Host species	Mouse
Tested applications	Suitable for: IHC-P, Protein Array, WB, ICC
Species reactivity	Reacts with: Human
Immunogen	Recombinant fragment within Human Topoisomerase II alpha aa 1352-1493. The exact sequence is proprietary. Database link: P11388
Positive control	IHC-P: Human tonsil and bladder carcinoma tissue. ICC: HeLa cells. WB: HeLa cell lysate.
General notes	<p>The Life Science industry has been in the grips of a reproducibility crisis for a number of years. Abcam is leading the way in addressing this with our range of recombinant monoclonal antibodies and knockout edited cell lines for gold-standard validation. Please check that this product meets your needs before purchasing.</p> <p>If you have any questions, special requirements or concerns, please send us an inquiry and/or contact our Support team ahead of purchase. Recommended alternatives for this product can be found below, along with publications, customer reviews and Q&As</p>

Properties

Form	Liquid
Storage instructions	Shipped at 4°C. Store at +4°C short term (1-2 weeks). Upon delivery aliquot. Store at -20°C long term. Avoid freeze / thaw cycle.
Storage buffer	pH: 7.2 Preservative: 0.05% Sodium azide Constituents: 99% PBS, 0.05% BSA
Purity	Protein A/G purified
Purification notes	ab219321 was purified from Bioreactor Concentrate by Protein A/G.
Clonality	Monoclonal
Clone number	TOP2A/1362

Isotype	IgG2b
Light chain type	kappa

Applications

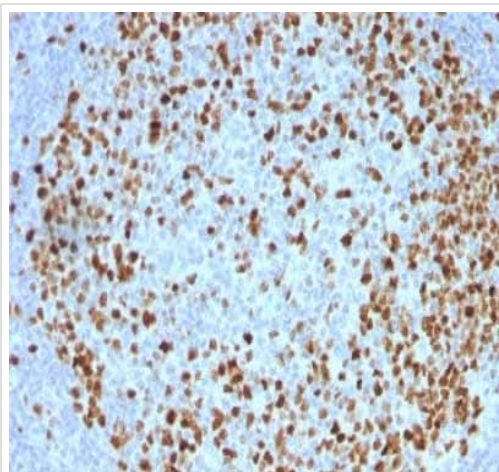
The Abpromise guarantee Our **Abpromise guarantee** covers the use of ab219321 in the following tested applications. The application notes include recommended starting dilutions; optimal dilutions/concentrations should be determined by the end user.

Application	Abreviews	Notes
IHC-P		Use a concentration of 1 - 2 µg/ml. Perform heat mediated antigen retrieval with citrate buffer pH 6 before commencing with IHC staining protocol. (Primary incubation for 30 min at RT).
Protein Array		Use at an assay dependent concentration.
WB		Use a concentration of 1 - 2 µg/ml. Predicted molecular weight: 174 kDa.
ICC		Use a concentration of 1 - 2 µg/ml.

Target

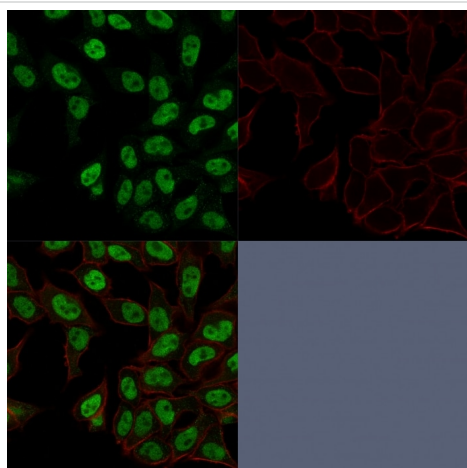
Function	Control of topological states of DNA by transient breakage and subsequent rejoining of DNA strands. Topoisomerase II makes double-strand breaks.
Sequence similarities	Belongs to the type II topoisomerase family.
Post-translational modifications	Phosphorylation has no effect on catalytic activity.
Cellular localization	Cytoplasm. Nucleus > nucleoplasm. Generally located in the nucleoplasm.

Images



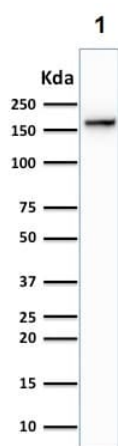
Immunohistochemistry (Formalin/PFA-fixed paraffin-embedded sections) - Anti-Topoisomerase II alpha antibody [TOP2A/1362] (ab219321)

Immunohistochemical analysis of formalin-fixed, paraffin-embedded human tonsil tissue labeling Topoisomerase II alpha with ab219321 at 1 $\mu\text{g/ml}$.



Immunocytochemistry - Anti-Topoisomerase II alpha antibody [TOP2A/1362] (ab219321)

Immunocytochemistry analysis of HeLa (Human epithelial cell line from cervix adenocarcinoma) cells labeling Topoisomerase II alpha with ab219321 at 1 $\mu\text{g/ml}$ (Green). Phalloidin (Red) is used to label actin.

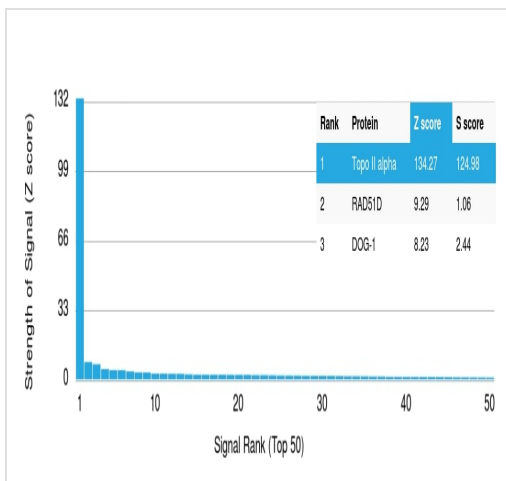


Western blot - Anti-Topoisomerase II alpha antibody [TOP2A/1362] (ab219321)

Anti-Topoisomerase II alpha antibody [TOP2A/1362] (ab219321) at 1 $\mu\text{g/ml}$ + HeLa (Human epithelial cell line from cervix adenocarcinoma) whole cell lysate

Predicted band size: 174 kDa

Western blot analysis of HeLa cell lysate labeling Topoisomerase II alpha with ab219321 at 1 $\mu\text{g/ml}$.

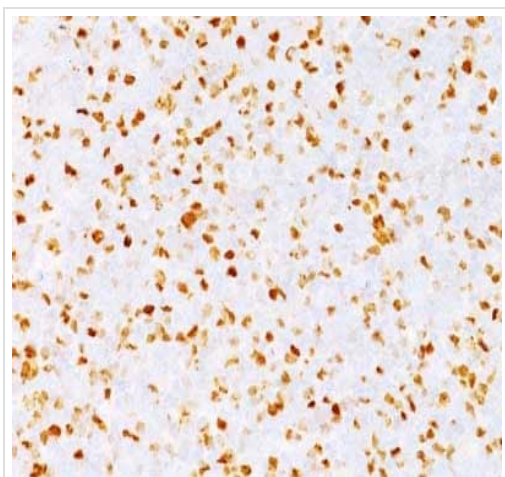


Protein Array - Anti-Topoisomerase II alpha antibody
[TOP2A/1362] (ab219321)

ab219321 was tested in protein array against over 19000 different full-length human proteins.

Z- and S- Score: The Z-score represents the strength of a signal that a monoclonal antibody (MAb) (in combination with a fluorescently-tagged anti-IgG secondary antibody) produces when binding to a particular protein on the HuProt™ array. Z-scores are described in units of standard deviations (SD's) above the mean value of all signals generated on that array. If targets on HuProt™ are arranged in descending order of the Z-score, the S-score is the difference (also in units of SD's) between the Z-score. S-score therefore represents the relative target specificity of a MAb to its intended target.

A MAb is specific to its intended target if the MAb has an S-score of at least 2.5. For example, if a MAb binds to protein X with a Z-score of 43 and to protein Y with a Z-score of 14, then the S-score for the binding of that MAb to protein X is equal to 29.



Immunohistochemistry (Formalin/PFA-fixed paraffin-embedded sections) - Anti-Topoisomerase II alpha antibody [TOP2A/1362] (ab219321)

Immunohistochemical analysis of formalin-fixed, paraffin-embedded human bladder carcinoma tissue labeling Topoisomerase II alpha with ab219321 at 1 µg/ml.

Please note: All products are "FOR RESEARCH USE ONLY. NOT FOR USE IN DIAGNOSTIC PROCEDURES"

Our Abpromise to you: Quality guaranteed and expert technical support

- Replacement or refund for products not performing as stated on the datasheet
- Valid for 12 months from date of delivery
- Response to your inquiry within 24 hours
- We provide support in Chinese, English, French, German, Japanese and Spanish
- Extensive multi-media technical resources to help you

- We investigate all quality concerns to ensure our products perform to the highest standards

If the product does not perform as described on this datasheet, we will offer a refund or replacement. For full details of the Abpromise, please visit <https://www.abcam.com/abpromise> or contact our technical team.

Terms and conditions

- Guarantee only valid for products bought direct from Abcam or one of our authorized distributors