

## Product datasheet

# Anti-TOX antibody [NAN448B] ab237009

**KO** VALIDATED

★★★★☆ [1 Abreviews](#) [5 References](#) [16 Images](#)

### Overview

---

|                            |   |
|----------------------------|---|
| <b>Product name</b>        | Anti-TOX antibody [NAN448B]   |
| <b>Description</b>         | Rat monoclonal [NAN448B] to TOX   |
| <b>Host species</b>        | Rat   |
| <b>Tested applications</b> | <b>Suitable for:</b> WB, IHC-P, IHC-Fr  |
| <b>Species reactivity</b>  | <b>Reacts with:</b> Mouse, Human  |
| <b>Immunogen</b>           | Recombinant fragment corresponding to Human TOX aa 1-250.<br>Database link: <a href="#">O94900</a><br><a href="#">Run BLAST with</a> <a href="#">Run BLAST with</a>   |
| <b>Positive control</b>    | WB: MOLT4 cell lysate IHC-P: Human tonsil, mycosis fungoides, NLPHL, fetal liver, thymus, kidney and testicle tissues. Mouse brain, retina, pancreas, spleen and thymus.  |
| <b>General notes</b>       | <p>The Life Science industry has been in the grips of a reproducibility crisis for a number of years. Abcam is leading the way in addressing this with our range of recombinant monoclonal antibodies and knockout edited cell lines for gold-standard validation. Please check that this product meets your needs before purchasing.</p> <p>If you have any questions, special requirements or concerns, please send us an inquiry and/or contact our Support team ahead of purchase. Recommended alternatives for this product can be found below, along with publications, customer reviews and Q&amp;As</p> |

### Properties

---

|                             |  |
|-----------------------------|--|
| <b>Form</b>                 | Liquid   |
| <b>Storage instructions</b> | Shipped at 4°C. Upon delivery aliquot. Store at +4°C. Do Not Freeze.     |
| <b>Storage buffer</b>       | pH: 7.4<br>Preservative: 0.02% Sodium azide<br>Constituents: PBS, 1% BSA |
| <b>Purity</b>               | Protein G purified   |
| <b>Clonality</b>            | Monoclonal   |
| <b>Clone number</b>         | NAN448B  |
| <b>Isotype</b>              | IgG1   |

## Applications

### The Abpromise guarantee

Our **Abpromise guarantee** covers the use of ab237009 in the following tested applications.

The application notes include recommended starting dilutions; optimal dilutions/concentrations should be determined by the end user.

| Application | Abreviews | Notes  |
|-------------|-----------|--|
| WB          |           | 1/200. Predicted molecular weight: 58 kDa.   |
| IHC-P       |           | 1/300.<br>Dilute at 1:50 when using a fluorescent secondary antibody.<br>Perform antigen retrieval before commencing with IHC staining protocol. |
| IHC-Fr      |           | Use at an assay dependent concentration.   |

## Target

### Function

May play a role in regulating T-cell development.

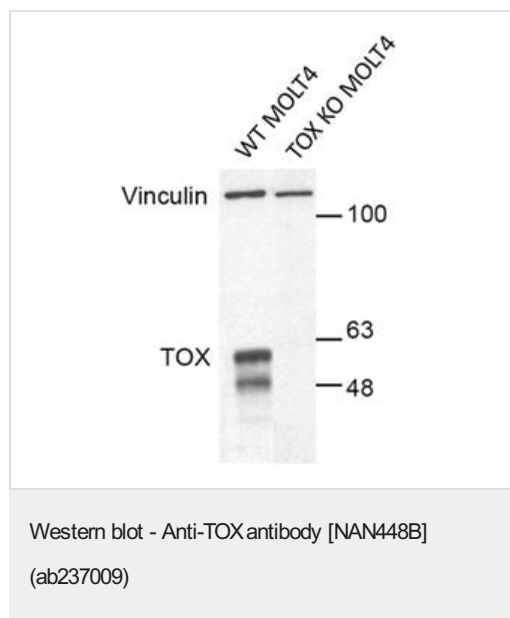
### Sequence similarities

Contains 1 HMG box DNA-binding domain.

### Cellular localization

Nucleus.

## Images



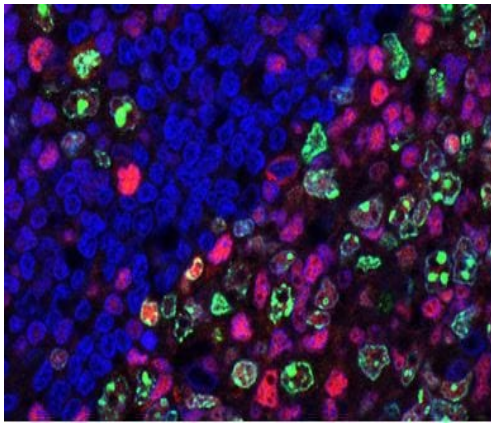
**All lanes** : Anti-TOX antibody [NAN448B] (ab237009) at 1/200 dilution

**Lane 1** : MOLT 4 cell line

**Lane 2** : MOLT 4 KO cell line

Lysates/proteins at 100 µg per lane.

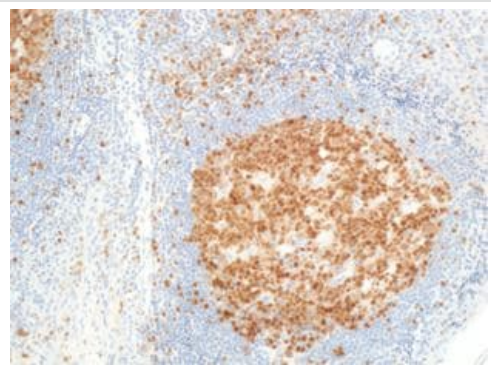
**Predicted band size:** 58 kDa



Immunohistochemistry (Formalin/PFA-fixed paraffin-embedded sections) - Anti-TOX antibody [NAN448B] (ab237009)

Immunofluorescent analysis of paraffin-embedded human tonsil tissue labelling TOX with ab237009 at 1/50 dilution (Red). DAPI is stained in blue and Ki67 is stained in green.

Antigen retrieval: 20 minutes ER2 (Tris-EDTA)

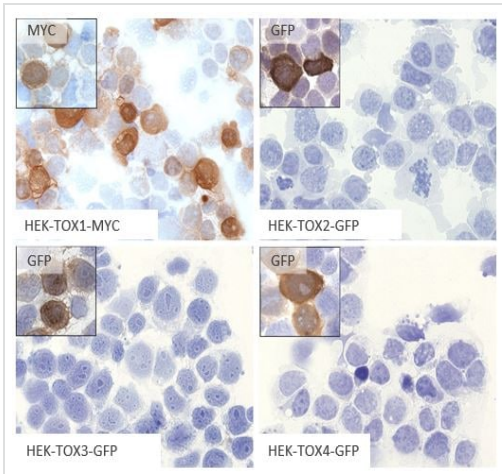


Immunohistochemistry (Formalin/PFA-fixed paraffin-embedded sections) - Anti-TOX antibody [NAN448B] (ab237009)

Paraffin-embedded human tonsil tissue stained for TOX using ab237009 at 1/200 dilution in immunohistochemical analysis.

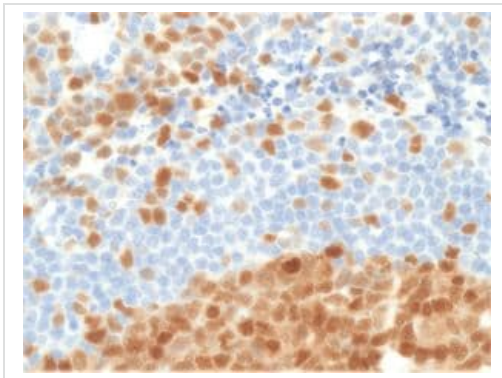
Antigen retrieval: 20 minutes ER2 (Tris-EDTA)

Incubated with primary antibody for 30 minutes.



Immunohistochemistry (Frozen sections) - Anti-TOX antibody [NAN448B] (ab237009)

To confirm that NAN448B mAb recognized human TOX protein and showed no cross-reactivity to other TOX family members, immunohistochemistry on frozen cytopins preparations of TOX1 ,TOX2 ,TOX3 and TOX4 expressed in HEK293T cells was performed. Anti-myc and anti-GFP antibodies were used as positive controls.

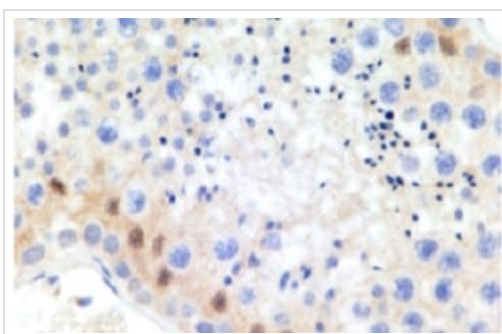


Immunohistochemistry (Formalin/PFA-fixed paraffin-embedded sections) - Anti-TOX antibody [NAN448B] (ab237009)

Paraffin-embedded human tonsil tissue stained for TOX using ab237009 at 1/200 dilution in immunohistochemical analysis.

Antigen retrieval: 20 minutes ER2 (Tris-EDTA)

Incubated with primary antibody for 30 minutes.

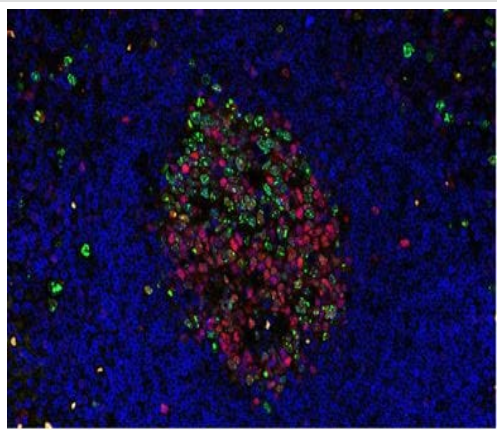


Immunohistochemistry (Formalin/PFA-fixed paraffin-embedded sections) - Anti-TOX antibody [NAN448B] (ab237009)

Paraffin-embedded human testicle tissue stained for TOX using ab237009 at 1/300 dilution in immunohistochemical analysis.

Antigen retrieval: ER2 for 20 minutes.

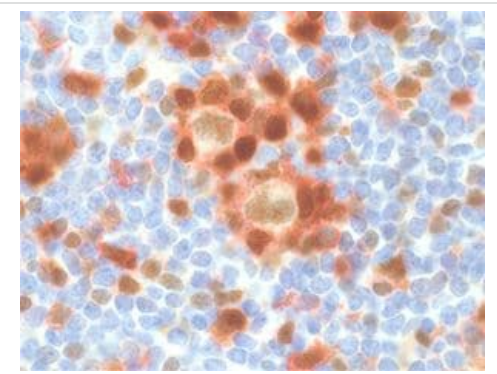
Incubated with primary antibody for 30 minutes.



Immunohistochemistry (Formalin/PFA-fixed paraffin-embedded sections) - Anti-TOX antibody [NAN448B] (ab237009)

Immunofluorescent analysis of paraffin-embedded human tonsil tissue labelling TOX with ab237009 at 1/50 dilution (Red). DAPI is stained in blue and Ki67 is stained in green.

Antigen retrieval: 20 minutes ER2 (Tris-EDTA)

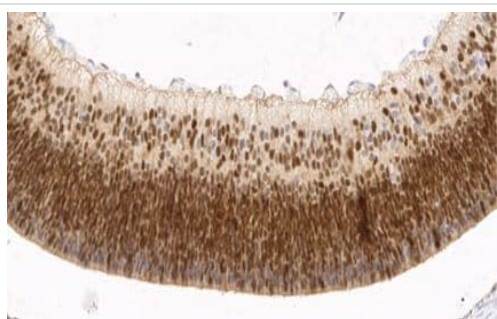


Immunohistochemistry (Formalin/PFA-fixed paraffin-embedded sections) - Anti-TOX antibody [NAN448B] (ab237009)

Paraffin-embedded Nodular Lymphocyte predominant Hodgkin Lymphoma (NLPHL) tissue stained for TOX using ab237009 at 1/200 dilution in immunohistochemical analysis. PD1 is stained in red.

Antigen retrieval: 20 minutes ER2 (Tris-EDTA).

Incubated with primary antibody for 30 minutes.

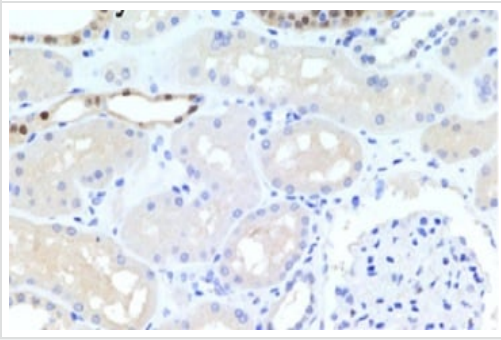


Immunohistochemistry (Formalin/PFA-fixed paraffin-embedded sections) - Anti-TOX antibody [NAN448B] (ab237009)

Paraffin-embedded mouse retina tissue stained for TOX using ab237009 at 1/100 dilution in immunohistochemical analysis.

Antigen retrieval: pH high

Incubated with primary antibody for 20 minutes.

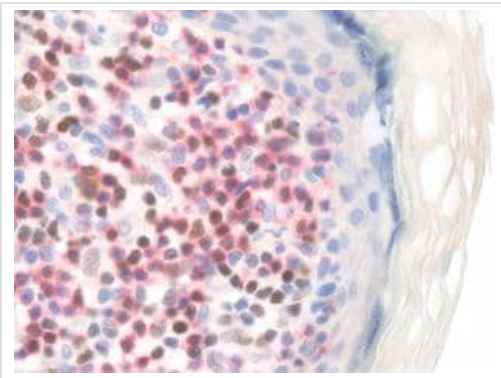


Immunohistochemistry (Formalin/PFA-fixed paraffin-embedded sections) - Anti-TOX antibody [NAN448B] (ab237009)

Paraffin-embedded human kidney tissue stained for TOX using ab237009 at 1/300 dilution in immunohistochemical analysis.

Antigen retrieval: ER2 for 20 minutes.

Incubated with primary antibody for 30 minutes.

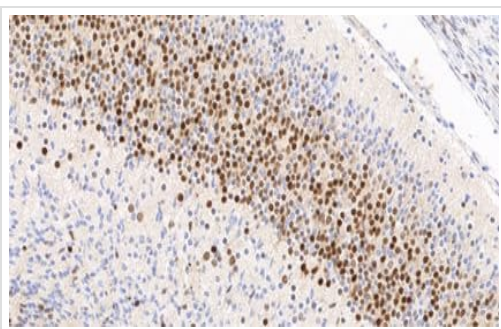


Immunohistochemistry (Formalin/PFA-fixed paraffin-embedded sections) - Anti-TOX antibody [NAN448B] (ab237009)

Paraffin-embedded mycosis fungoide tissue stained for TOX using ab237009 at 1/200 dilution in immunohistochemical analysis. CD8 is stained in red.

Antigen retrieval: 20 minutes ER2 (Tris-EDTA).

Incubated with primary antibody for 30 minutes.

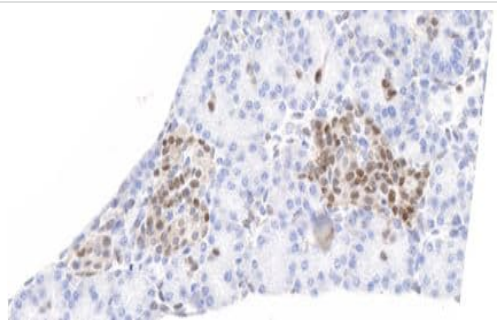


Immunohistochemistry (Formalin/PFA-fixed paraffin-embedded sections) - Anti-TOX antibody [NAN448B] (ab237009)

Paraffin-embedded mouse brain tissue stained for TOX using ab237009 at 1/100 dilution in immunohistochemical analysis.

Antigen retrieval: pH high

Incubated with primary antibody for 20 minutes.

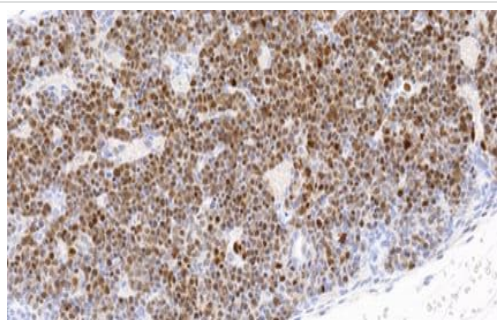


Immunohistochemistry (Formalin/PFA-fixed paraffin-embedded sections) - Anti-TOX antibody [NAN448B] (ab237009)

Paraffin-embedded mouse pancreas tissue stained for TOX using ab237009 at 1/100 dilution in immunohistochemical analysis.

Antigen retrieval: pH high

Incubated with primary antibody for 20 minutes.

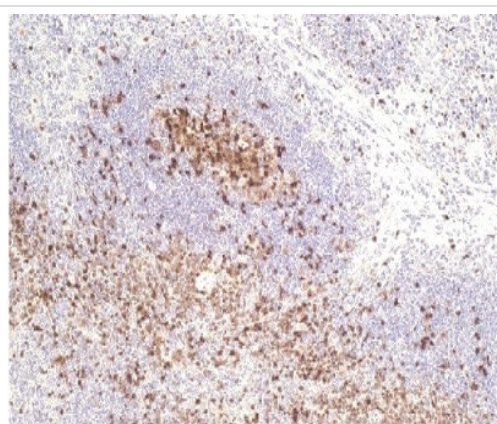


Immunohistochemistry (Formalin/PFA-fixed paraffin-embedded sections) - Anti-TOX antibody [NAN448B] (ab237009)

Paraffin-embedded mouse thymus tissue stained for TOX using ab237009 at 1/100 dilution in immunohistochemical analysis.

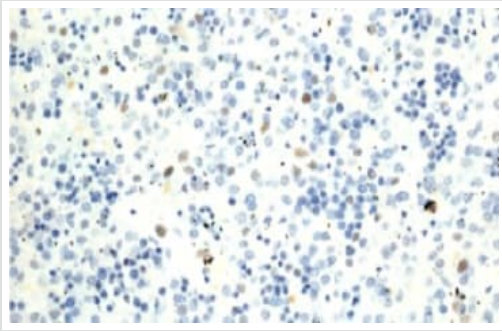
Antigen retrieval: pH high

Incubated with primary antibody for 20 minutes.



Immunohistochemistry (Formalin/PFA-fixed paraffin-embedded sections) - Anti-TOX antibody [NAN448B] (ab237009)

Immunohistochemistry (Formalin/PFA-fixed paraffin-embedded sections) of mouse spleen staining TOX1 with purified ab237009 at 1:100 for 20 mins. Antigen retrieval was performed using a high pH.



Immunohistochemistry (Formalin/PFA-fixed paraffin-embedded sections) - Anti-TOX antibody [NAN448B] (ab237009)

Paraffin-embedded human fetal liver tissue stained for TOX using ab237009 at 1/300 dilution in immunohistochemical analysis.

Antigen retrieval: ER2 for 20 minutes.

Incubated with primary antibody for 30 minutes.

**Please note:** All products are "FOR RESEARCH USE ONLY. NOT FOR USE IN DIAGNOSTIC PROCEDURES"

### Our Abpromise to you: Quality guaranteed and expert technical support

---

- Replacement or refund for products not performing as stated on the datasheet
- Valid for 12 months from date of delivery
- Response to your inquiry within 24 hours
- We provide support in Chinese, English, French, German, Japanese and Spanish
- Extensive multi-media technical resources to help you
- We investigate all quality concerns to ensure our products perform to the highest standards

If the product does not perform as described on this datasheet, we will offer a refund or replacement. For full details of the Abpromise, please visit <https://www.abcam.com/abpromise> or contact our technical team.

### Terms and conditions

---

- Guarantee only valid for products bought direct from Abcam or one of our authorized distributors