



### Anti-TRA2A antibody ab169052

5 Images

#### Overview

<b>Product name</b>	Anti-TRA2A antibody
<b>Description</b>	Mouse polyclonal to TRA2A
<b>Host species</b>	Mouse
<b>Tested applications</b>	<b>Suitable for:</b> WB, ICC/IF
<b>Species reactivity</b>	<b>Reacts with:</b> Mouse, Human
<b>Immunogen</b>	Recombinant full length protein within Human TRA2A aa 1-300. The exact immunogen sequence used to generate this antibody is proprietary information. If additional detail on the immunogen is needed to determine the suitability of the antibody for your needs, please <b>contact</b> our Scientific Support team to discuss your requirements.
	<div>  <a href="#">Run BLAST with</a> </div> <div>  <a href="#">Run BLAST with</a> </div>
<b>Positive control</b>	HepG2 whole cell lysate ( <a href="#">ab7900</a> ), Raw 267.4 cell lysate, NIH 3T3 cell lysate, TRA2A transfected 293T cell lysate; HeLa cells.
<b>General notes</b>	<p>The Life Science industry has been in the grips of a reproducibility crisis for a number of years. Abcam is leading the way in addressing this with our range of recombinant monoclonal antibodies and knockout edited cell lines for gold-standard validation. Please check that this product meets your needs before purchasing.</p> <p>If you have any questions, special requirements or concerns, please send us an inquiry and/or contact our Support team ahead of purchase. Recommended alternatives for this product can be found below, along with publications, customer reviews and Q&amp;As</p>

#### Properties

<b>Form</b>	Liquid
<b>Storage instructions</b>	Shipped at 4°C. Store at +4°C short term (1-2 weeks). Upon delivery aliquot. Store at -20°C long term.
<b>Storage buffer</b>	pH: 7.4 Constituent: 99% PBS
<b>Purity</b>	Protein A purified
<b>Clonality</b>	Polyclonal
<b>Isotype</b>	IgG

## Applications

### The Abpromise guarantee

Our **Abpromise guarantee** covers the use of ab169052 in the following tested applications.

The application notes include recommended starting dilutions; optimal dilutions/concentrations should be determined by the end user.

Application	Abreviews	Notes
WB		Use a concentration of 1 µg/ml. Predicted molecular weight: 32 kDa.
ICC/IF		Use a concentration of 10 µg/ml.

## Target

### Function

Sequence-specific RNA-binding protein which participates in the control of pre-mRNA splicing.

### Sequence similarities

Belongs to the splicing factor SR family.

Contains 1 RRM (RNA recognition motif) domain.

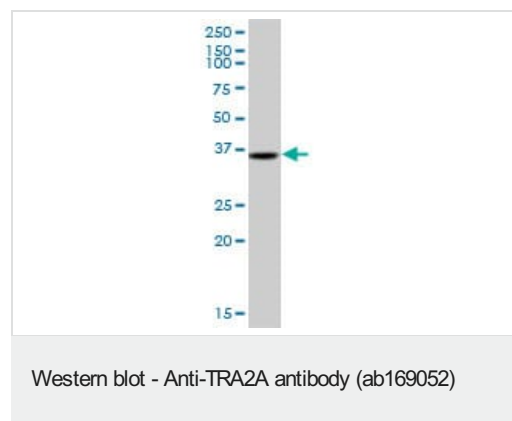
### Post-translational modifications

Phosphorylated in the RS domains.

### Cellular localization

Nucleus.

## Images



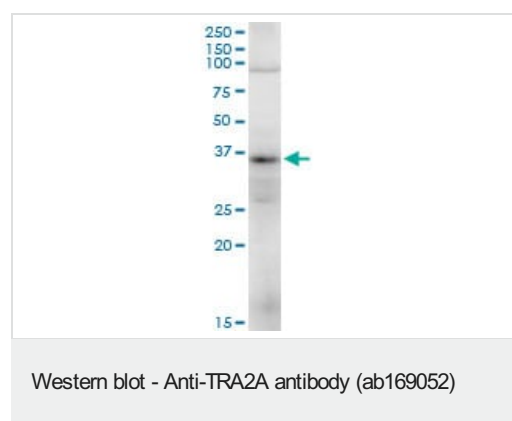
Anti-TRA2A antibody (ab169052) at 1 µg/ml + HepG2 cell lysate at 50 µg

### Secondary

Goat anti-mouse HRP conjugated antibody at 1/2500 dilution

Developed using the ECL technique.

**Predicted band size:** 32 kDa



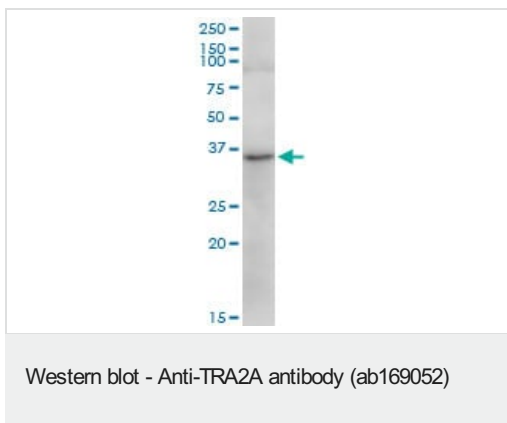
Anti-TRA2A antibody (ab169052) at 1 µg/ml + Raw 267.4 cell lysate at 50 µg

### Secondary

Goat anti-mouse HRP conjugated antibody at 1/2500 dilution

Developed using the ECL technique.

**Predicted band size:** 32 kDa



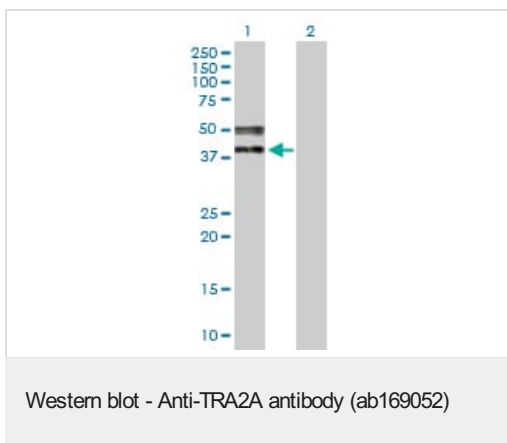
Anti-TRA2A antibody (ab169052) at 1 µg/ml + NIH 3T3 cell lysate at 50 µg

#### Secondary

Goat anti-mouse HRP conjugated antibody at 1/2500 dilution

Developed using the ECL technique.

**Predicted band size:** 32 kDa



**All lanes :** Anti-TRA2A antibody (ab169052) at 1 µg/ml

**Lane 1 :** TRA2A transfected 293T cell lysate

**Lane 2 :** non 293T cell lysate

Lysates/proteins at 15 µl per lane.

#### Secondary

**All lanes :** Goat anti-mouse HRP conjugated antibody at 1/2500 dilution

Developed using the ECL technique.

**Predicted band size:** 32 kDa



Immunofluorescent analysis of HeLa cells labeling TRA2A with ab169052 at 10 µg/ml.

**Please note:** All products are "FOR RESEARCH USE ONLY. NOT FOR USE IN DIAGNOSTIC PROCEDURES"

**Our Abpromise to you: Quality guaranteed and expert technical support**

- Replacement or refund for products not performing as stated on the datasheet
- Valid for 12 months from date of delivery
- Response to your inquiry within 24 hours
- We provide support in Chinese, English, French, German, Japanese and Spanish
- Extensive multi-media technical resources to help you
- We investigate all quality concerns to ensure our products perform to the highest standards

If the product does not perform as described on this datasheet, we will offer a refund or replacement. For full details of the Abpromise, please visit <https://www.abcam.com/abpromise> or contact our technical team.

#### **Terms and conditions**

---

- Guarantee only valid for products bought direct from Abcam or one of our authorized distributors