


Anti-TRA2B/SFRS10 antibody ab31353

★★★★★ [1 Abreviews](#) [25 References](#) [3 Images](#)

Overview

Product name	Anti-TRA2B/SFRS10 antibody
Description	Rabbit polyclonal to TRA2B/SFRS10
Host species	Rabbit
Tested applications	Suitable for: IHC-P, WB, ICC/IF, CLIP
Species reactivity	Reacts with: Mouse, Human Predicted to work with: Rat, Chicken, Cow 
Immunogen	Synthetic peptide. This information is proprietary to Abcam and/or its suppliers.
Positive control	ICC/IF: HeLa
General notes	<p>The Life Science industry has been in the grips of a reproducibility crisis for a number of years. Abcam is leading the way in addressing this with our range of recombinant monoclonal antibodies and knockout edited cell lines for gold-standard validation. Please check that this product meets your needs before purchasing.</p> <p>If you have any questions, special requirements or concerns, please send us an inquiry and/or contact our Support team ahead of purchase. Recommended alternatives for this product can be found below, along with publications, customer reviews and Q&As</p>

Properties

Form	Liquid
Storage instructions	Shipped at 4°C. Store at +4°C short term (1-2 weeks). Upon delivery aliquot. Store at -20°C or -80°C. Avoid freeze / thaw cycle.
Storage buffer	<p>pH: 7.40</p> <p>Preservative: 0.02% Sodium azide</p> <p>Constituent: PBS</p> <p>Batches of this product that have a concentration < 1mg/ml may have BSA added as a stabilising agent. If you would like information about the formulation of a specific lot, please contact our scientific support team who will be happy to help.</p>
Purity	Immunogen affinity purified
Clonality	Polyclonal
Isotype	IgG

Applications

The Abpromise guarantee

Our **Abpromise guarantee** covers the use of ab31353 in the following tested applications.

The application notes include recommended starting dilutions; optimal dilutions/concentrations should be determined by the end user.

Application	Abreviews	Notes
IHC-P		Use at an assay dependent concentration.
WB	★★★★★ (1)	Use a concentration of 1 µg/ml. Detects a band of approximately 40 kDa (predicted molecular weight: 33 kDa). Although the predicted molecular mass of TRA2B/SFRS10 is ~33 kDa, the available literature describes TRA2B/SFRS10 running at ~40 kDa in SDS-PAGE
ICC/IF		Use a concentration of 1 µg/ml.
CLIP		Use at an assay dependent concentration. PubMed: 22194695

Target

Function

Sequence-specific RNA-binding protein which participates in the control of pre-mRNA splicing.

Tissue specificity

Highest expression in heart, skeletal muscle and pancreas. Less abundant in kidney, placenta and brain. Lowest expression in kidney and liver.

Sequence similarities

Belongs to the splicing factor SR family.
Contains 1 RRM (RNA recognition motif) domain.

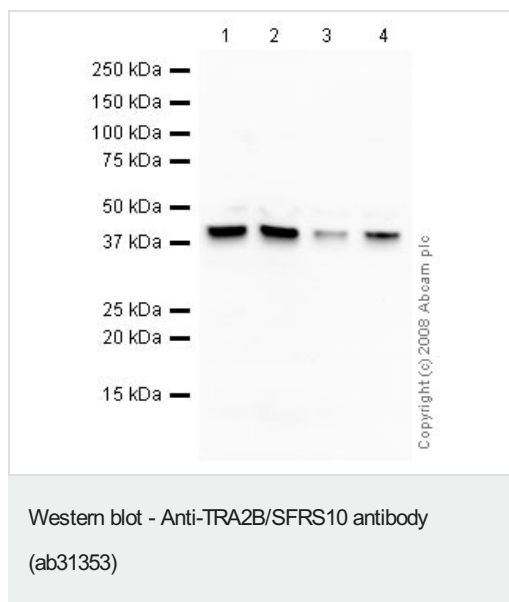
Post-translational modifications

Phosphorylated in the RS domains.
Dimethylation at Arg-241 is probably asymmetric.

Cellular localization

Nucleus.

Images



All lanes : Anti-TRA2B/SFRS10 antibody (ab31353) at 1 µg/ml

Lane 1 : HeLa (Human epithelial carcinoma cell line) Whole Cell Lysate

Lane 2 : Jurkat (Human T cell lymphoblast-like cell line) Whole Cell Lysate

Lane 3 : A431 (Human epithelial carcinoma cell line) Whole Cell Lysate

Lane 4 : HEK293 (Human embryonic kidney cell line) Whole Cell Lysate

Lysates/proteins at 10 µg per lane.

Secondary

All lanes : Goat polyclonal to Rabbit IgG - H&L - Pre-Adsorbed (HRP) at 1/3000 dilution

Developed using the ECL technique.

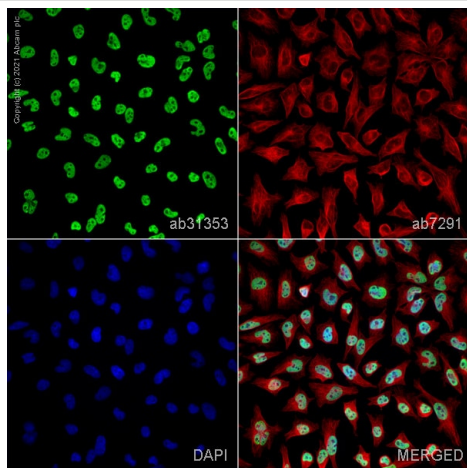
Performed under reducing conditions.

Predicted band size: 33 kDa

Observed band size: 40 kDa

Exposure time: 5 minutes

Although the predicted molecular mass of TRA2B/SFRS10 is ~33 kDa, the available literature describes TRA2B/SFRS10 running at ~40 kDa in SDS-PAGE.

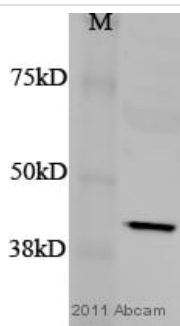


Immunocytochemistry/ Immunofluorescence - Anti-TRA2B/SFRS10 antibody (ab31353)

ab31353 staining TRA2B in HeLa cells. The cells were fixed with 4% paraformaldehyde (10 min), permeabilized with 0.1% PBS-Triton X-100 for 5 minutes and then blocked with 1% BSA/10% normal goat serum/0.3M glycine in 0.1%PBS-Tween for 1h. The cells were then incubated overnight at 4°C with ab31353 at 1µg/ml and **ab7291**, Mouse monoclonal [DM1A] to alpha Tubulin - Loading Control. Cells were then incubated with **ab150081**, Goat polyclonal Secondary Antibody to Rabbit IgG - H&L (Alexa Fluor® 488), pre-adsorbed at 1/1000 dilution (shown in green) and **ab150120**, Goat polyclonal Secondary Antibody to Mouse IgG - H&L (Alexa Fluor® 594), pre-adsorbed at 1/1000 dilution (shown in pseudocolour red). Nuclear DNA was labelled with DAPI (shown in blue).

Also suitable in cells fixed with 100% methanol (5 min).

Image was acquired with a high-content analyser (Operetta CLS, Perkin Elmer) and a maximum intensity projection of confocal sections is shown.



Western blot - Anti-TRA2B/SFRS10 antibody (ab31353)

This image is courtesy of an anonymous Abreview.

Anti-TRA2B/SFRS10 antibody (ab31353) at 1/100 dilution + NSC34 mouse cell lysate at 20 µg

Secondary

IRDYE® 800CW Donkey anti-Rabbit IgG at 1/3000 dilution

Developed using the ECL technique.

Performed under reducing conditions.

Predicted band size: 33 kDa

Observed band size: 42 kDa

Exposure time: 1 minute

Please note: All products are "FOR RESEARCH USE ONLY. NOT FOR USE IN DIAGNOSTIC PROCEDURES"

Our Abpromise to you: Quality guaranteed and expert technical support

- Replacement or refund for products not performing as stated on the datasheet
- Valid for 12 months from date of delivery
- Response to your inquiry within 24 hours
- We provide support in Chinese, English, French, German, Japanese and Spanish
- Extensive multi-media technical resources to help you

- We investigate all quality concerns to ensure our products perform to the highest standards

If the product does not perform as described on this datasheet, we will offer a refund or replacement. For full details of the Abpromise, please visit <https://www.abcam.com/abpromise> or contact our technical team.

Terms and conditions

- Guarantee only valid for products bought direct from Abcam or one of our authorized distributors