

Anti-TRAF6 antibody ab137452

[14 References](#) [9 Images](#)

Overview

Product name	Anti-TRAF6 antibody
Description	Rabbit polyclonal to TRAF6
Host species	Rabbit
Tested applications	Suitable for: IP, WB, IHC-P, ICC/IF
Species reactivity	Reacts with: Mouse, Rat, Human
Immunogen	Recombinant fragment corresponding to a region within amino acids 144-408 of Human TRAF6 (UniProt ID: Q9Y4K3).
Positive control	WB: A431, A549, HeLa, HepG2, NIH/3T3, BCL-1, PC-12, Rat2 cell lysate. IHC-P: 59T xenograft, mouse lung and rat brain tissue. IF: HeLa cells. IP: K562 whole cell lysate.
General notes	<p>The Life Science industry has been in the grips of a reproducibility crisis for a number of years. Abcam is leading the way in addressing this with our range of recombinant monoclonal antibodies and knockout edited cell lines for gold-standard validation. Please check that this product meets your needs before purchasing.</p> <p>If you have any questions, special requirements or concerns, please send us an inquiry and/or contact our Support team ahead of purchase. Recommended alternatives for this product can be found below, along with publications, customer reviews and Q&As</p>

Properties

Form	Liquid
Storage instructions	Shipped at 4°C. Store at +4°C short term (1-2 weeks). Upon delivery aliquot. Store at -20°C or -80°C. Avoid freeze / thaw cycle.
Storage buffer	pH: 7.00 Preservative: 0.025% Proclin 300 Constituents: 78% PBS, 1% BSA, 20% Glycerol (glycerin, glycerine)
Purity	Immunogen affinity purified
Clonality	Polyclonal
Isotype	IgG

Applications

The Abpromise guarantee

Our **Abpromise guarantee** covers the use of ab137452 in the following tested applications.

The application notes include recommended starting dilutions; optimal dilutions/concentrations should be determined by the end user.

Application	Abreviews	Notes
IP		1/100 - 1/500.
WB		1/500 - 1/3000. Predicted molecular weight: 60 kDa.
IHC-P		1/100 - 1/1000.
ICC/IF		1/100 - 1/1000.

Target

Function

E3 ubiquitin ligase that, together with UBE2N and UBE2V1, mediates the synthesis of 'Lys-63'-linked-polyubiquitin chains conjugated to proteins, such as IKBKG, AKT1 and AKT2. Also mediates ubiquitination of free/unanchored polyubiquitin chain that leads to MAP3K7 activation. Leads to the activation of NF-kappa-B and JUN. May be essential for the formation of functional osteoclasts. Seems to also play a role in dendritic cells (DCs) maturation and/or activation. Represses c-Myb-mediated transactivation, in B lymphocytes. Adapter protein that seems to play a role in signal transduction initiated via TNF receptor, IL-1 receptor and IL-17 receptor.

Tissue specificity

Expressed in heart, brain, placenta, lung, liver, skeletal muscle, kidney and pancreas.

Pathway

Protein modification; protein ubiquitination.

Sequence similarities

Belongs to the TNF receptor-associated factor family. A subfamily.
Contains 1 MATH domain.
Contains 1 RING-type zinc finger.
Contains 2 TRAF-type zinc fingers.

Domain

The coiled coil domain mediates homo- and hetero-oligomerization.
The MATH/TRAF domain binds to receptor cytoplasmic domains.

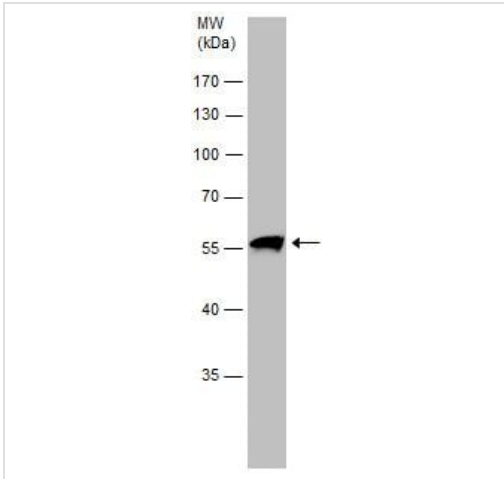
Post-translational modifications

Sumoylated on Lys-124, Lys-142 and Lys-453 by SUMO1.
Polyubiquitinated on Lys-124; after cell stimulation with IL-1-beta or TGF-beta. This ligand-induced cell stimulation leads to dimerization/oligomerization of TRAF6 molecules, followed by auto-ubiquitination which involves UBE2N and UBE2V1 and leads to TRAF6 activation. This 'Lys-63' site-specific poly-ubiquitination appears to be associated with the activation of signaling molecules. Endogenous autoubiquitination occurs only for the cytoplasmic form.

Cellular localization

Cytoplasm. Cytoplasm > cell cortex. Nucleus. Found in the nuclei of some aggressive B-cell lymphoma cell lines as well as in the nuclei of both resting and activated T-and B-lymphocytes. Found in punctate nuclear body protein complexes. Ubiquitination may occur in the cytoplasm and sumoylation in the nucleus.

Images

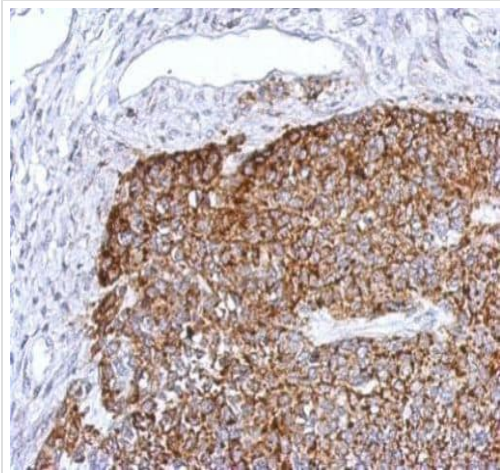


Western blot - Anti-TRAF6 antibody (ab137452)

Anti-TRAF6 antibody (ab137452) at 1/2000 dilution + A431 (human epidermoid carcinoma cell line) whole cell lysate at 30 μ g

Predicted band size: 60 kDa

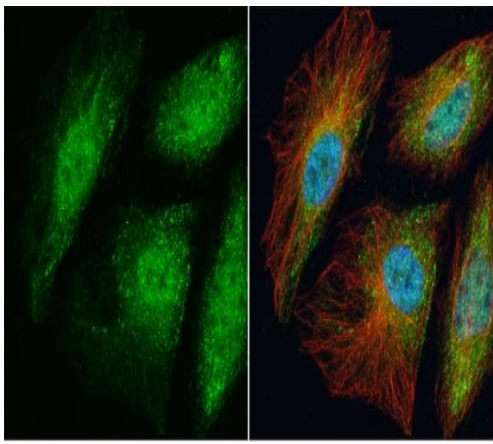
10% SDS-PAGE



Immunohistochemistry (Formalin/PFA-fixed paraffin-embedded sections) - Anti-TRAF6 antibody (ab137452)

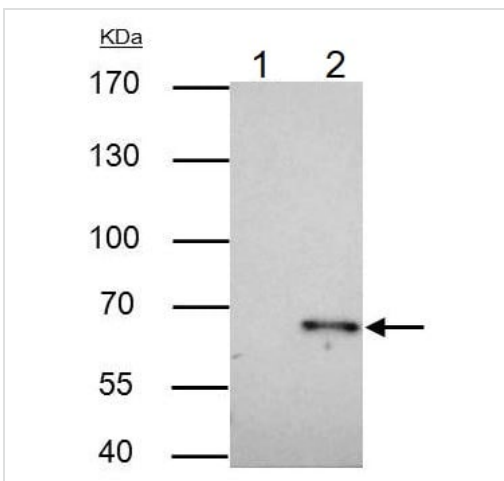
Paraffin-embedded 59T xenograft tissue stained TRAF6 using ab137452 at 1/500 dilution in immunohistochemical analysis.

Antigen Retrieval: EDTA based buffer, pH 8.0, 15min.



Immunocytochemistry/ Immunofluorescence - Anti-TRAF6 antibody (ab137452)

Immunofluorescence analysis of 4% paraformaldehyde-fixed, at RT for 15 min, HeLa (human epithelial cell line from cervix adenocarcinoma) cells labelling TRAF6 at cytoplasm and nucleus (green) with ab137452 at 1/100 dilution. Red: alpha Tubulin, a cytoskeleton marker, stained by alpha Tubulin antibody at 1/1000 dilution. Blue: Hoechst 33342 staining.



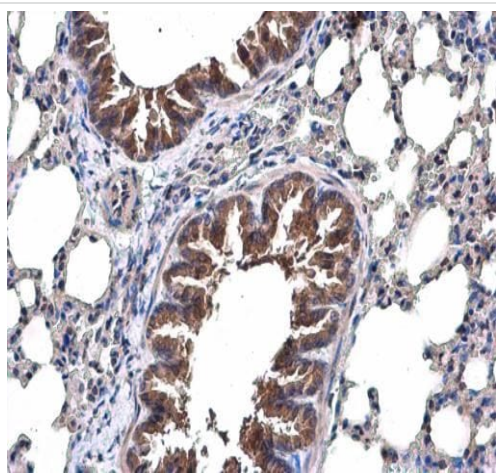
Immunoprecipitation - Anti-TRAF6 antibody (ab137452)

IP samples: K562 (human chronic myelogenous leukemia cell line from bone marrow) whole cell lysate.

- 1- Control with 4 μ g of preimmune Rabbit IgG;
- 2- Immunoprecipitation of TRAF6 protein by 4 μ g ab137452.

7.5 % SDS-PAGE

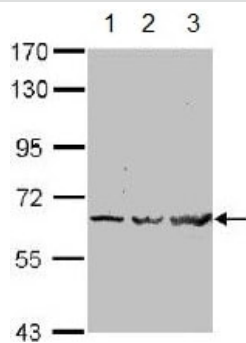
The immunoprecipitated TRAF6 protein was detected by ab137452 at 1/500 dilution, followed by anti-rabbit IgG antibody.



Immunohistochemistry (Formalin/PFA-fixed paraffin-embedded sections) - Anti-TRAF6 antibody (ab137452)

Paraffin-embedded mouse lung tissue stained TRAF6 at cytoplasm using ab137452 at 1/500 dilution in immunohistochemical analysis.

Antigen Retrieval: Citrate buffer, pH 6.0, 15 min.



Western blot - Anti-TRAF6 antibody (ab137452)

All lanes : Anti-TRAF6 antibody (ab137452) at 1/1000 dilution

Lane 1 : A549 (human lung carcinoma cell line) whole cell lysate

Lane 2 : HeLa (human epithelial cell line from cervix adenocarcinoma) whole cell lysate

Lane 3 : HepG2 (human liver hepatocellular carcinoma cell line) whole cell lysate

Lysates/proteins at 30 µg per lane.

Secondary

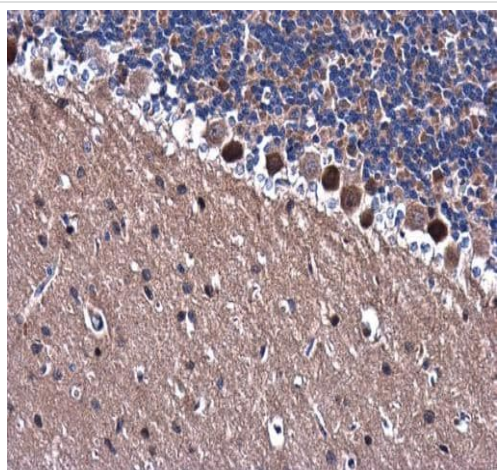
All lanes : HRP-conjugated anti-rabbit IgG antibody

Predicted band size: 60 kDa

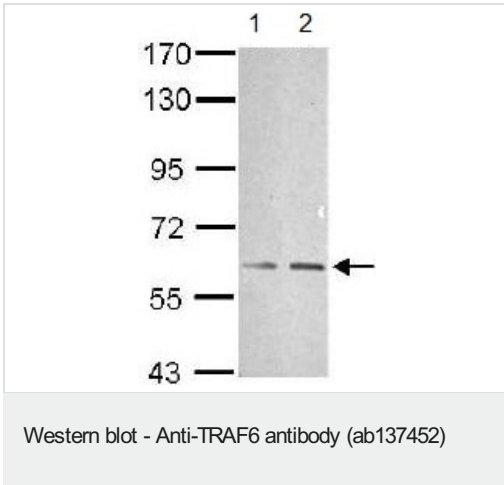
7.5% SDS PAGE

Paraffin-embedded rat brain tissue stained TRAF6 at cytoplasm using ab137452 at 1/500 dilution in immunohistochemical analysis.

Antigen Retrieval: Citrate buffer, pH 6.0, 15 min.



Immunohistochemistry (Formalin/PFA-fixed paraffin-embedded sections) - Anti-TRAF6 antibody (ab137452)



All lanes : Anti-TRAF6 antibody (ab137452) at 1/1000 dilution

Lane 1 : NIH/3T3 (mouse embryo fibroblast cell line) whole cell lysate

Lane 2 : BCL-1 (mouse B lymphocyte lymphoma cell line) whole cell lysate

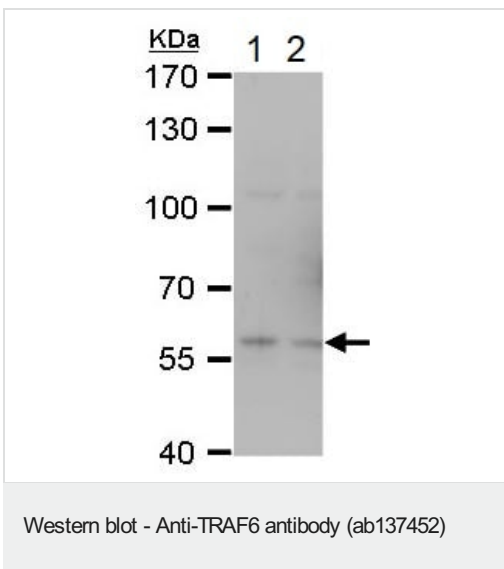
Lysates/proteins at 30 µg per lane.

Secondary

All lanes : HRP-conjugated anti-rabbit IgG antibody

Predicted band size: 60 kDa

7.5% SDS PAGE



All lanes : Anti-TRAF6 antibody (ab137452) at 1/1000 dilution

Lane 1 : PC-12 (rat adrenal gland pheochromocytoma cell line) whole cell lysate

Lane 2 : Rat2 (rat fibroblast cell line) whole cell lysate

Lysates/proteins at 30 µg per lane.

Secondary

All lanes : HRP-conjugated anti-rabbit IgG antibody

Predicted band size: 60 kDa

7.5% SDS-PAGE

Please note: All products are "FOR RESEARCH USE ONLY. NOT FOR USE IN DIAGNOSTIC PROCEDURES"

Our Abpromise to you: Quality guaranteed and expert technical support

- Replacement or refund for products not performing as stated on the datasheet
- Valid for 12 months from date of delivery
- Response to your inquiry within 24 hours
- We provide support in Chinese, English, French, German, Japanese and Spanish

- Extensive multi-media technical resources to help you
- We investigate all quality concerns to ensure our products perform to the highest standards

If the product does not perform as described on this datasheet, we will offer a refund or replacement. For full details of the Abpromise, please visit <https://www.abcam.com/abpromise> or contact our technical team.

Terms and conditions

- Guarantee only valid for products bought direct from Abcam or one of our authorized distributors