


## Product datasheet

# Anti-TRAP220/MED1 (phospho T1457) antibody [EPR13269] $\alpha$ b181103

Recombinant RabMAb

[1 References](#) [5 Images](#)

### Overview

<b>Product name</b>	Anti-TRAP220/MED1 (phospho T1457) antibody [EPR13269]
<b>Description</b>	Rabbit monoclonal [EPR13269] to TRAP220/MED1 (phospho T1457)
<b>Host species</b>	Rabbit
<b>Tested applications</b>	<b>Suitable for:</b> Dot blot, IHC-P, WB
<b>Species reactivity</b>	<b>Reacts with:</b> Human <b>Predicted to work with:</b> Mouse, Rat 
<b>Immunogen</b>	Synthetic peptide. This information is proprietary to Abcam and/or its suppliers.
<b>Positive control</b>	HeLa cell lysate, Human pancreas tissue and Human thyroid gland carcinoma tissue
<b>General notes</b>	This product is a recombinant monoclonal antibody, which offers several advantages including: <ul style="list-style-type: none"> <li>- High batch-to-batch consistency and reproducibility</li> <li>- Improved sensitivity and specificity</li> <li>- Long-term security of supply</li> <li>- Animal-free production</li> </ul> For more information <a href="#">see here</a> . Our RabMAb <sup>®</sup> technology is a patented hybridoma-based technology for making rabbit monoclonal antibodies. For details on our patents, please refer to <a href="#">RabMAb<sup>®</sup> patents</a> .

### Properties

<b>Form</b>	Liquid
<b>Storage instructions</b>	Shipped at 4°C. Store at +4°C short term (1-2 weeks). Upon delivery aliquot. Store at -20°C long term. Avoid freeze / thaw cycle.
<b>Storage buffer</b>	Preservative: 0.01% Sodium azide Constituents: 0.05% BSA, 59% PBS, 40% Glycerol (glycerin, glycerine)
<b>Purity</b>	Tissue culture supernatant
<b>Clonality</b>	Monoclonal
<b>Clone number</b>	EPR13269

Isotype

IgG

## Applications

---

### The Abpromise guarantee

Our **Abpromise guarantee** covers the use of ab181103 in the following tested applications.

The application notes include recommended starting dilutions; optimal dilutions/concentrations should be determined by the end user.

Application	Abreviews	Notes
Dot blot		1/1000.
IHC-P		1/100 - 1/250. Perform heat mediated antigen retrieval with Tris/EDTA buffer pH 9.0 before commencing with IHC staining protocol.
WB		1/1000 - 1/10000. Predicted molecular weight: 168 kDa.

## Target

---

### Function

Component of the Mediator complex, a coactivator involved in the regulated transcription of nearly all RNA polymerase II-dependent genes. Mediator functions as a bridge to convey information from gene-specific regulatory proteins to the basal RNA polymerase II transcription machinery. Mediator is recruited to promoters by direct interactions with regulatory proteins and serves as a scaffold for the assembly of a functional preinitiation complex with RNA polymerase II and the general transcription factors.

### Tissue specificity

Ubiquitously expressed.

### Sequence similarities

Belongs to the Mediator complex subunit 1 family.

### Post-translational modifications

Phosphorylated by MAPK1 or MAPK3 during G2/M phase which may enhance protein stability and promote entry into the nucleolus. Phosphorylated upon DNA damage, probably by ATM or ATR.

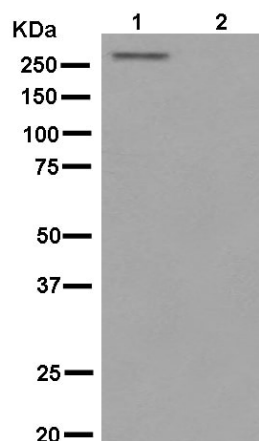
### Cellular localization

Nucleus. A subset of the protein may enter the nucleolus subsequent to phosphorylation by MAPK1 or MAPK3.

---

## Images

---



Western blot - Anti-TRAP220/MED1 (phospho T1457) antibody [EPR13269] (ab181103)

**All lanes** : Anti-TRAP220/MED1 (phospho T1457) antibody [EPR13269] (ab181103) at 1/10000 dilution

**Lane 1** : HeLa cell lysate

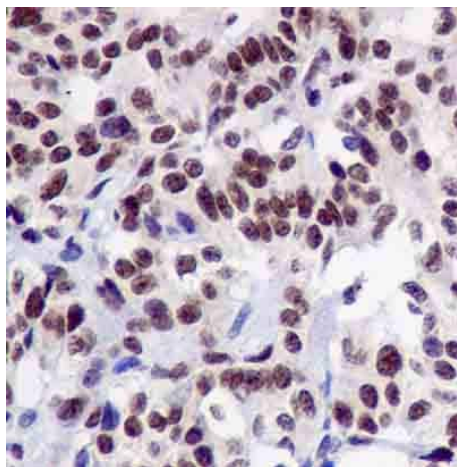
**Lane 2** : HeLa cell lysate treated with Lambda Phosphatase

Lysates/proteins at 10 µg per lane.

#### Secondary

**All lanes** : Goat Anti-Rabbit IgG, (H+L), Peroxidase conjugated at 1/1000 dilution

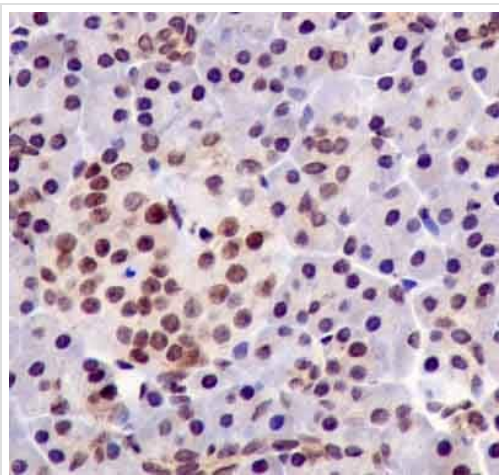
**Predicted band size:** 168 kDa



Immunohistochemistry (Formalin/PFA-fixed paraffin-embedded sections) - Anti-TRAP220/MED1 (phospho T1457) antibody [EPR13269] (ab181103)

Immunohistochemical analysis of paraffin-embedded sections of Human thyroid gland carcinoma tissue labeling TRAP220/MED1 (phospho T1457) using ab181103 at a 1/250 dilution, followed by a HRP Polymer for Rabbit IgG secondary antibody and counterstained with Hematoxylin.

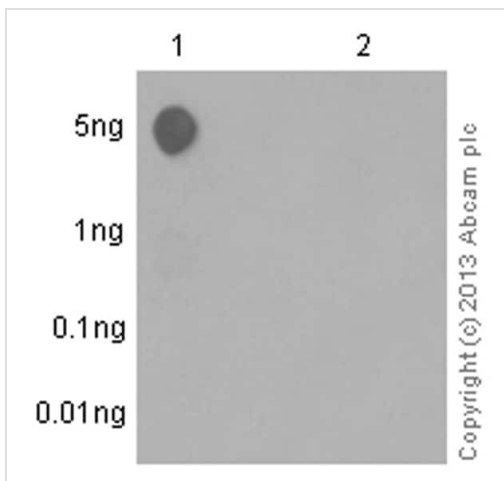
Perform heat mediated antigen retrieval with EDTA buffer pH 9 before commencing with IHC staining protocol.



Immunohistochemistry (Formalin/PFA-fixed paraffin-embedded sections) - Anti-TRAP220/MED1 (phospho T1457) antibody [EPR13269] (ab181103)

Immunohistochemical analysis of paraffin-embedded sections of Human pancreas tissue labeling TRAP220/MED1 (phospho T1457) using ab181103 at a 1/250 dilution, followed by a HRP Polymer for Rabbit IgG secondary antibody and counterstained with Hematoxylin.

Perform heat mediated antigen retrieval with EDTA buffer pH 9 before commencing with IHC staining protocol.



Dot Blot - Anti-TRAP220/MED1 (phospho T1457) antibody [EPR13269] (ab181103)

Dot blot analysis of TRAP220/MED1 (pT1457) peptide (Lane 1), TRAP220/MED1 non-phospho peptide (Lane 2) labelling TRAP220/MED1 (pT1457) with ab181103 at a dilution of 1/1000. A Peroxidase-conjugated goat anti-rabbit IgG (H+L) was used as the secondary antibody at a dilution of 1/2500.

Blocking and dilution buffer: 5% NFDm/TBST.

Exposure time: 10 seconds.

### Why choose a recombinant antibody?



**Research with confidence**  
Consistent and reproducible results



**Long-term and scalable supply**  
Recombinant technology



**Success from the first experiment**  
Confirmed specificity



**Ethical standards compliant**  
Animal-free production

Anti-TRAP220/MED1 (phospho T1457) antibody  
[EPR13269] (ab181103)

**Please note:** All products are "FOR RESEARCH USE ONLY. NOT FOR USE IN DIAGNOSTIC PROCEDURES"

### Our Abpromise to you: Quality guaranteed and expert technical support

---

- Replacement or refund for products not performing as stated on the datasheet
- Valid for 12 months from date of delivery
- Response to your inquiry within 24 hours
- We provide support in Chinese, English, French, German, Japanese and Spanish
- Extensive multi-media technical resources to help you
- We investigate all quality concerns to ensure our products perform to the highest standards

If the product does not perform as described on this datasheet, we will offer a refund or replacement. For full details of the Abpromise, please visit <https://www.abcam.com/abpromise> or contact our technical team.

### Terms and conditions

---

- Guarantee only valid for products bought direct from Abcam or one of our authorized distributors