


## Product datasheet

### Anti-TRC40 antibody [EPR11422] ab169549

Recombinant RabMAb

5 Images

#### Overview

Product name	Anti-TRC40 antibody [EPR11422]
Description	Rabbit monoclonal [EPR11422] to TRC40
Host species	Rabbit
Tested applications	<b>Suitable for:</b> WB, IHC-P <b>Unsuitable for:</b> Flow Cyt or ICC/IF
Species reactivity	<b>Reacts with:</b> Human <b>Predicted to work with:</b> Mouse, Rat 
Immunogen	Synthetic peptide corresponding to Human TRC40 aa 50-150.
Positive control	Fetal brain, fetal kidney, HeLa and 293T lysates; Human cervical carcinoma and kidney tissues; Immunoprecipitation pellet from fetal brain lysate.
General notes	<p>This product is a recombinant monoclonal antibody, which offers several advantages including:</p> <ul style="list-style-type: none"> <li>- High batch-to-batch consistency and reproducibility</li> <li>- Improved sensitivity and specificity</li> <li>- Long-term security of supply</li> <li>- Animal-free production</li> </ul> <p>For more information <a href="#">see here</a>.</p> <p>Our RabMAb® technology is a patented hybridoma-based technology for making rabbit monoclonal antibodies. For details on our patents, please refer to <a href="#">RabMAb® patents</a>.</p>

#### Properties

Form	Liquid
Storage instructions	Shipped at 4°C. Store at +4°C short term (1-2 weeks). Upon delivery aliquot. Store at -20°C long term.
Storage buffer	pH: 7.2 Preservative: 0.01% Sodium azide Constituents: 9% PBS, 40% Glycerol (glycerin, glycerine), 0.05% BSA, 50% Tissue culture supernatant
Purity	Tissue culture supernatant
Clonality	Monoclonal

**Clone number**                      EPR11422

**Isotype**                              IgG

## Applications

**The Abpromise guarantee**              Our **Abpromise guarantee** covers the use of ab169549 in the following tested applications. The application notes include recommended starting dilutions; optimal dilutions/concentrations should be determined by the end user.

Application	Abreviews	Notes
WB		1/1000 - 1/10000. Predicted molecular weight: 39 kDa.
IHC-P		1/50 - 1/100. Perform heat mediated antigen retrieval with citrate buffer pH 6 before commencing with IHC staining protocol.

**Application notes**                      Is unsuitable for Flow Cyt or ICC/IF.

## Target

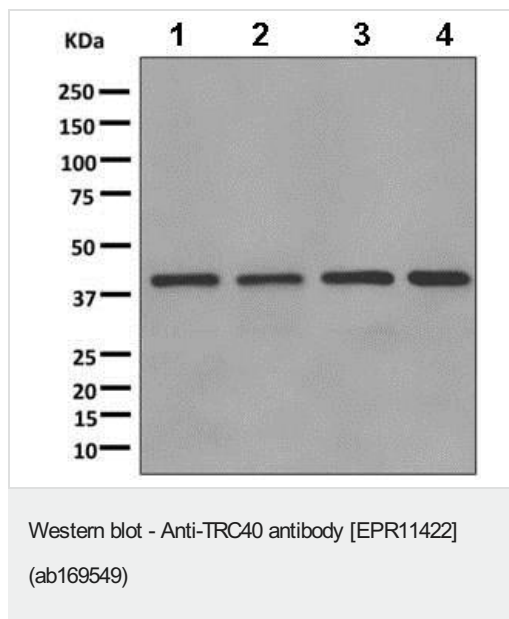
**Function**                                      ATPase required for the post-translational delivery of tail-anchored (TA) proteins to the endoplasmic reticulum. Recognizes and selectively binds the transmembrane domain of TA proteins in the cytosol. This complex then targets to the endoplasmic reticulum by membrane-bound receptors, where the tail-anchored protein is released for insertion. This process is regulated by ATP binding and hydrolysis. ATP binding drives the homodimer towards the closed dimer state, facilitating recognition of newly synthesized TA membrane proteins. ATP hydrolysis is required for insertion. Subsequently, the homodimer reverts towards the open dimer state, lowering its affinity for the membrane-bound receptor, and returning it to the cytosol to initiate a new round of targeting (By similarity). May be involved in insulin signaling.

**Tissue specificity**                              Expressed in the epithelial cells of the liver, kidney, and stomach wall, in the adrenal medulla, in the islet cells of the pancreas, in the red pulp of the spleen, and in cardiac and skeletal muscle.

**Sequence similarities**                              Belongs to the arsA ATPase family.

**Cellular localization**                              Cytoplasm. Endoplasmic reticulum. Nucleus > nucleolus.

## Images



**All lanes :** Anti-TRC40 antibody [EPR11422] (ab169549) at 1/1000 dilution

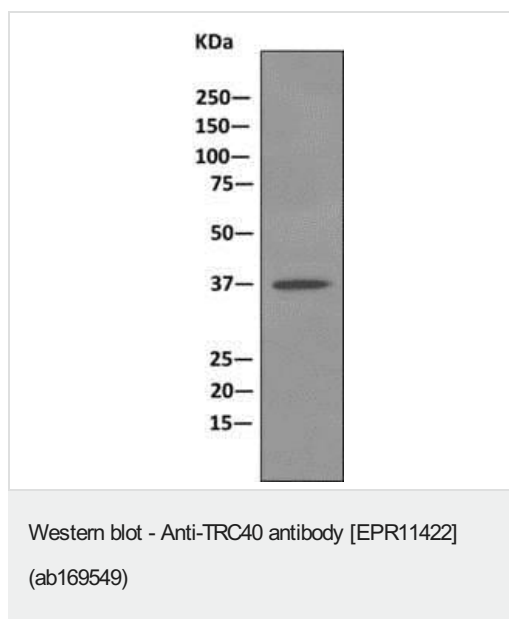
- Lane 1 :** Fetal brain tissue lysate
- Lane 2 :** Fetal kidney tissue lysate
- Lane 3 :** HeLa cell lysate
- Lane 4 :** 293T cell lysate

Lysates/proteins at 10 µg per lane.

#### Secondary

**All lanes :** HRP labeled goat anti-rabbit at 1/2000 dilution

**Predicted band size:** 39 kDa

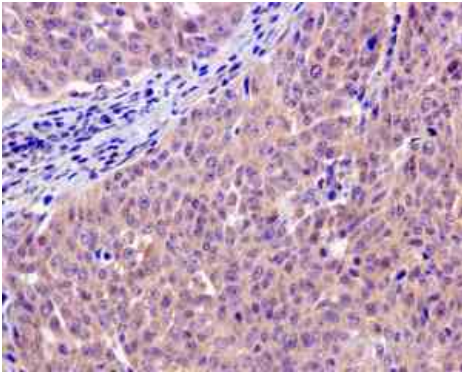


Anti-TRC40 antibody [EPR11422] (ab169549) at 1/1000 dilution + Immunoprecipitation pellet from fetal brain tissue lysate

#### Secondary

HRP-conjugated anti-rabbit IgG preferentially detecting the non-reduced form of rabbit IgG

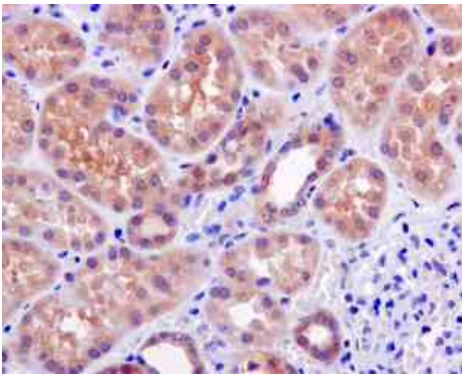
**Predicted band size:** 39 kDa



Immunohistochemistry (Formalin/PFA-fixed paraffin-embedded sections) - Anti-TRC40 antibody [EPR11422] (ab169549)

Immunohistochemical analysis of paraffin-embedded Human cervical carcinoma tissue labeling TRC40 with ab169549 at 1/50 dilution.

Perform heat mediated antigen retrieval with citrate buffer pH 6 before commencing with IHC staining protocol.



Immunohistochemistry (Formalin/PFA-fixed paraffin-embedded sections) - Anti-TRC40 antibody [EPR11422] (ab169549)

Immunohistochemical analysis of paraffin-embedded Human kidney tissue labeling TRC40 with ab169549 at 1/50 dilution.

Perform heat mediated antigen retrieval with citrate buffer pH 6 before commencing with IHC staining protocol.

### Why choose a recombinant antibody?



**Research with confidence**  
Consistent and reproducible results



**Long-term and scalable supply**  
Recombinant technology



**Success from the first experiment**  
Confirmed specificity



**Ethical standards compliant**  
Animal-free production

Anti-TRC40 antibody [EPR11422] (ab169549)

**Please note:** All products are "FOR RESEARCH USE ONLY. NOT FOR USE IN DIAGNOSTIC PROCEDURES"

### **Our Abpromise to you: Quality guaranteed and expert technical support**

---

- Replacement or refund for products not performing as stated on the datasheet
- Valid for 12 months from date of delivery
- Response to your inquiry within 24 hours
  
- We provide support in Chinese, English, French, German, Japanese and Spanish
- Extensive multi-media technical resources to help you
- We investigate all quality concerns to ensure our products perform to the highest standards

If the product does not perform as described on this datasheet, we will offer a refund or replacement. For full details of the Abpromise, please visit <https://www.abcam.com/abpromise> or contact our technical team.

### **Terms and conditions**

---

- Guarantee only valid for products bought direct from Abcam or one of our authorized distributors