

## Product datasheet

### Anti-TREM1 antibody [EPR22060-229] $\alpha$ b225861

Recombinant **RabMAb**

[4 References](#) [6 Images](#)

#### Overview

<b>Product name</b>	Anti-TREM1 antibody [EPR22060-229]
<b>Description</b>	Rabbit monoclonal [EPR22060-229] to TREM1
<b>Host species</b>	Rabbit
<b>Tested applications</b>	<b>Suitable for:</b> IHC-P
<b>Species reactivity</b>	<b>Reacts with:</b> Human
<b>Immunogen</b>	Recombinant fragment. This information is proprietary to Abcam and/or its suppliers.
<b>Positive control</b>	IHC-P: Human colon, stomach and lung tissue.
<b>General notes</b>	<p>This product is a recombinant monoclonal antibody, which offers several advantages including:</p> <ul style="list-style-type: none"> <li>- High batch-to-batch consistency and reproducibility</li> <li>- Improved sensitivity and specificity</li> <li>- Long-term security of supply</li> <li>- Animal-free production</li> </ul> <p>For more information <a href="#">see here</a>.</p> <p>Our RabMAb<sup>®</sup> technology is a patented hybridoma-based technology for making rabbit monoclonal antibodies. For details on our patents, please refer to <a href="#">RabMAb<sup>®</sup> patents</a>.</p>

#### Properties

<b>Form</b>	Liquid
<b>Storage instructions</b>	Shipped at 4°C. Store at +4°C short term (1-2 weeks). Upon delivery aliquot. Store at -20°C long term. Avoid freeze / thaw cycle.
<b>Storage buffer</b>	<p>pH: 7.20</p> <p>Preservative: 0.01% Sodium azide</p> <p>Constituents: 59% PBS, 40% Glycerol (glycerin, glycerine), 0.05% BSA</p>
<b>Purity</b>	Protein A purified
<b>Clonality</b>	Monoclonal
<b>Clone number</b>	EPR22060-229
<b>Isotype</b>	IgG

## Applications

### The Abpromise guarantee

Our **Abpromise guarantee** covers the use of ab225861 in the following tested applications.

The application notes include recommended starting dilutions; optimal dilutions/concentrations should be determined by the end user.

Application	Abreviews	Notes
IHC-P		1/500. Perform heat mediated antigen retrieval with Tris/EDTA buffer pH 9.0 before commencing with IHC staining protocol.

## Target

### Function

Stimulates neutrophil and monocyte-mediated inflammatory responses. Triggers release of pro-inflammatory chemokines and cytokines, as well as increased surface expression of cell activation markers. Amplifier of inflammatory responses that are triggered by bacterial and fungal infections and is a crucial mediator of septic shock.

### Tissue specificity

Highly expressed in adult liver, lung and spleen than in corresponding fetal tissue. Also expressed in the lymph node, placenta, spinal cord and heart tissues. Expression is more elevated in peripheral blood leukocytes than in the bone marrow and in normal cells than malignant cells. Expressed at low levels in the early development of the hematopoietic system and in the promonocytic stage and at high levels in mature monocytes. Strongly expressed in acute inflammatory lesions caused by bacteria and fungi. Isoform 2 was detected in the lung, liver and mature monocytes.

### Sequence similarities

Contains 1 Ig-like V-type (immunoglobulin-like) domain.

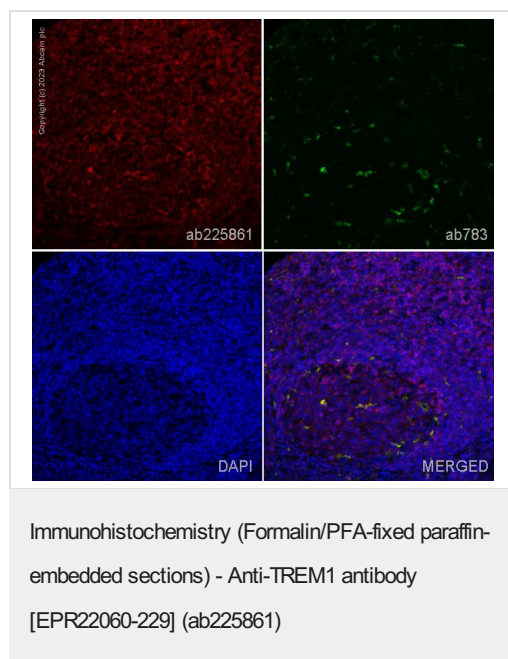
### Post-translational modifications

Glycosylated.

### Cellular localization

Secreted and Cell membrane.

## Images



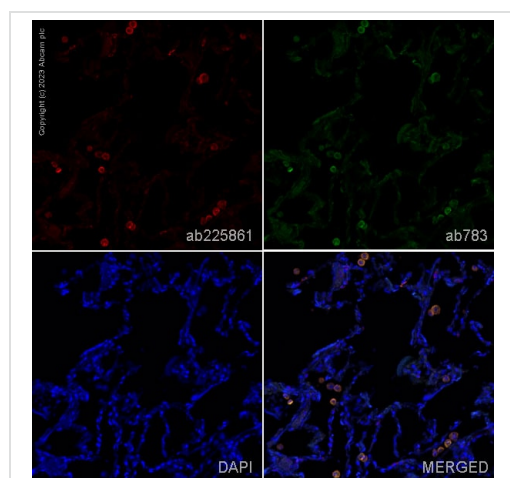
IHC image of TREM1 staining in a section of formalin-fixed paraffin-embedded normal human tonsil\*. The section was pre-treated using pressure cooker heat mediated antigen retrieval with sodium citrate buffer (pH6) for 30mins. The section was then incubated overnight at +4°C with ab225861 at 1 µg/ml and **ab783**, Mouse monoclonal [PG-M1] to CD68, at 5 µg/ml and then detected with an Alexa Fluor® 594 goat anti-rabbit secondary antibody (**ab150080**) at a 1/1000 dilution (shown in red) and Alexa Fluor® 488 goat anti-mouse secondary antibody (**ab150117**) at a 1/1000 dilution (shown in green). Nuclear DNA was labelled with DAPI (shown in blue). The section was then mounted using Dako Fluorescence Mounting Medium®.

Image was taken with a confocal microscope (Leica-Microsystems, TCS SP8).

For other IHC staining systems (automated and non-automated),

customers should optimize variable parameters such as antigen retrieval conditions, antibody concentrations and incubation times.

\*Tissue obtained from the Human Research Tissue Bank, supported by the NIHR Cambridge Biomedical Research Centre.



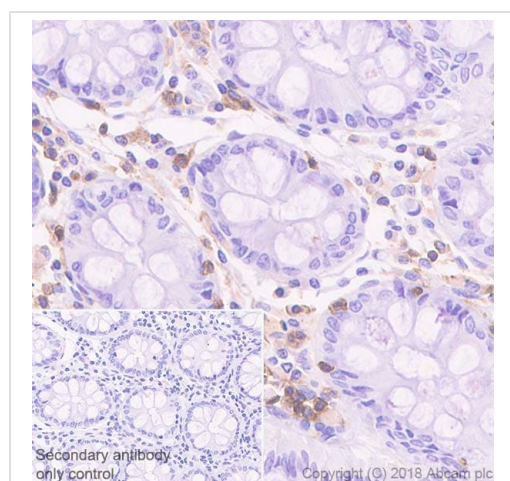
Immunohistochemistry (Formalin/PFA-fixed paraffin-embedded sections) - Anti-TREM1 antibody [EPR22060-229] (ab225861)

IHC image of TREM1 staining in a section of formalin-fixed paraffin-embedded normal human lung\*. The section was pre-treated using pressure cooker heat mediated antigen retrieval with sodium citrate buffer (pH6) for 30mins. The section was then incubated overnight at +4°C with ab225861 at 1 µg/ml and **ab783**, Mouse monoclonal [PG-M1] to CD68, at 5 µg/ml and then detected with an Alexa Fluor® 594 goat anti-rabbit secondary antibody (**ab150080**) at a 1/1000 dilution (shown in red) and Alexa Fluor® 488 goat anti-mouse secondary antibody (**ab150117**) at a 1/1000 dilution (shown in green). Nuclear DNA was labelled with DAPI (shown in blue). The section was then mounted using Dako Fluorescence Mounting Medium®.

Image was taken with a confocal microscope (Leica-Microsystems, TCS SP8).

For other IHC staining systems (automated and non-automated), customers should optimize variable parameters such as antigen retrieval conditions, antibody concentrations and incubation times.

\*Tissue obtained from the Human Research Tissue Bank, supported by the NIHR Cambridge Biomedical Research Centre.

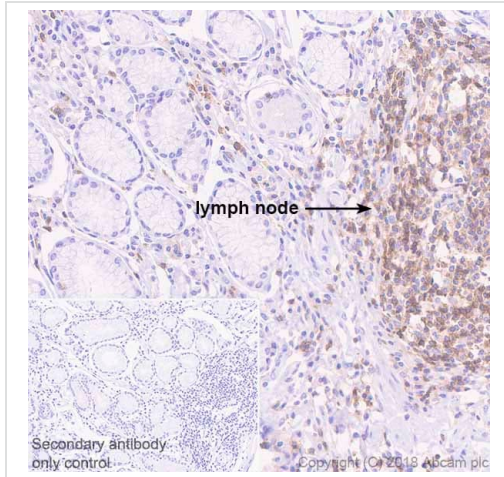


Immunohistochemistry (Formalin/PFA-fixed paraffin-embedded sections) - Anti-TREM1 antibody [EPR22060-229] (ab225861)

Immunohistochemical analysis of paraffin-embedded human colon tissue labeling TREM1 with ab225861 at 1/500 dilution, followed by a ready to use Goat Anti-Rabbit IgG H&L (HRP). Positive staining on interstitial cells of human colon (PMID: 17853946; PMID: 20933010) is observed. Counterstained with hematoxylin.

Secondary antibody only control: Used PBS instead of primary antibody, secondary antibody is a ready to use Goat Anti-Rabbit IgG H&L (HRP).

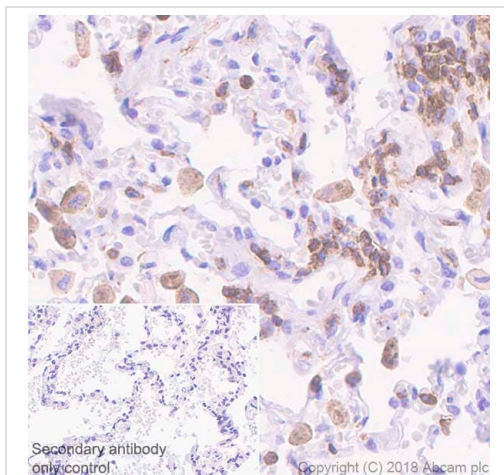
Heat mediated antigen retrieval using **ab93684** (Tris/EDTA buffer, pH 9.0).



Immunohistochemical analysis of paraffin-embedded human stomach tissue labeling TREM1 with ab225861 at 1/500 dilution, followed by a ready to use Goat Anti-Rabbit IgG H&L (HRP). Positive staining on interstitial cells and lymphocytes in human stomach (PMID: 17853946; PMID: 20933010) is observed. Counterstained with hematoxylin.

Secondary antibody only control: Used PBS instead of primary antibody, secondary antibody is a ready to use Goat Anti-Rabbit IgG H&L (HRP).

Heat mediated antigen retrieval using [ab93684](#) (Tris/EDTA buffer, pH 9.0).



Immunohistochemical analysis of paraffin-embedded human lung tissue labeling TREM1 with ab225861 at 1/500 dilution, followed by a ready to use Goat Anti-Rabbit IgG H&L (HRP). Positive staining on alveolar macrophages in human lung (PMID: 12792857; PMID: 20933010) is observed. Counterstained with hematoxylin.

Secondary antibody only control: Used PBS instead of primary antibody, secondary antibody is a ready to use Goat Anti-Rabbit IgG H&L (HRP).

Heat mediated antigen retrieval using [ab93684](#) (Tris/EDTA buffer, pH 9.0).

### Why choose a recombinant antibody?



**Research with confidence**  
Consistent and reproducible results



**Long-term and scalable supply**  
Recombinant technology



**Success from the first experiment**  
Confirmed specificity



**Ethical standards compliant**  
Animal-free production

Anti-TREM1 antibody [EPR22060-229] (ab225861)

**Please note:** All products are "FOR RESEARCH USE ONLY. NOT FOR USE IN DIAGNOSTIC PROCEDURES"

### Our Abpromise to you: Quality guaranteed and expert technical support

---

- Replacement or refund for products not performing as stated on the datasheet
- Valid for 12 months from date of delivery
- Response to your inquiry within 24 hours
- We provide support in Chinese, English, French, German, Japanese and Spanish
- Extensive multi-media technical resources to help you
- We investigate all quality concerns to ensure our products perform to the highest standards

If the product does not perform as described on this datasheet, we will offer a refund or replacement. For full details of the Abpromise, please visit <https://www.abcam.com/abpromise> or contact our technical team.

### Terms and conditions

---

- Guarantee only valid for products bought direct from Abcam or one of our authorized distributors