

Product datasheet

Anti-TREM1 antibody [L5-B8] ab106153

[1 Image](#)

Overview

Product name	Anti-TREM1 antibody [L5-B8]
Description	Rat monoclonal [L5-B8] to TREM1
Host species	Rat
Tested applications	Suitable for: Flow Cyt Unsuitable for: IHC-Fr or IHC-P
Species reactivity	Reacts with: Mouse
Immunogen	Mouse TREM1-Human IgG-Fc fusion protein.
General notes	<p>The Life Science industry has been in the grips of a reproducibility crisis for a number of years. Abcam is leading the way in addressing this with our range of recombinant monoclonal antibodies and knockout edited cell lines for gold-standard validation. Please check that this product meets your needs before purchasing.</p> <p>If you have any questions, special requirements or concerns, please send us an inquiry and/or contact our Support team ahead of purchase. Recommended alternatives for this product can be found below, along with publications, customer reviews and Q&As</p>

Properties

Form	Liquid
Storage instructions	Shipped at 4°C. Upon delivery aliquot and store at -20°C. Avoid freeze / thaw cycles.
Storage buffer	Constituents: 0.1% BSA, PBS
Purity	Protein G purified
Purification notes	ab106153 is 0.2 µm filtered.
Clonality	Monoclonal
Clone number	L5-B8
Isotype	IgG2a

Applications

The Abpromise guarantee Our **Abpromise guarantee** covers the use of ab106153 in the following tested applications. The application notes include recommended starting dilutions; optimal dilutions/concentrations should be determined by the end user.

Application	Abreviews	Notes
Flow Cyt		1/50. ab18450 - Rat monoclonal IgG2a, is suitable for use as an isotype control with this antibody.

Application notes Is unsuitable for IHC-Fr or IHC-P.

Target

Function Stimulates neutrophil and monocyte-mediated inflammatory responses. Triggers release of pro-inflammatory chemokines and cytokines, as well as increased surface expression of cell activation markers. Amplifier of inflammatory responses that are triggered by bacterial and fungal infections and is a crucial mediator of septic shock.

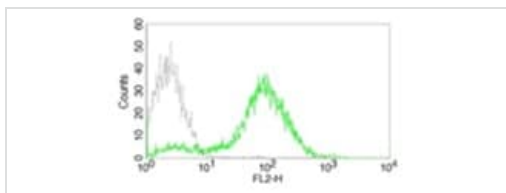
Tissue specificity Highly expressed in adult liver, lung and spleen than in corresponding fetal tissue. Also expressed in the lymph node, placenta, spinal cord and heart tissues. Expression is more elevated in peripheral blood leukocytes than in the bone marrow and in normal cells than malignant cells. Expressed at low levels in the early development of the hematopoietic system and in the promonocytic stage and at high levels in mature monocytes. Strongly expressed in acute inflammatory lesions caused by bacteria and fungi. Isoform 2 was detected in the lung, liver and mature monocytes.

Sequence similarities Contains 1 Ig-like V-type (immunoglobulin-like) domain.

Post-translational modifications Glycosylated.

Cellular localization Secreted and Cell membrane.

Images



ab106153 in flow cytometry. Goat ant-rat-PE (grey line) and ab106153/Goat anti-rat-PE (green line).

Flow Cytometry - Anti-TREM1 antibody [L5-B8]
(ab106153)

Please note: All products are "FOR RESEARCH USE ONLY. NOT FOR USE IN DIAGNOSTIC PROCEDURES"

Our Abpromise to you: Quality guaranteed and expert technical support

- Replacement or refund for products not performing as stated on the datasheet
- Valid for 12 months from date of delivery
- Response to your inquiry within 24 hours

- We provide support in Chinese, English, French, German, Japanese and Spanish
- Extensive multi-media technical resources to help you
- We investigate all quality concerns to ensure our products perform to the highest standards

If the product does not perform as described on this datasheet, we will offer a refund or replacement. For full details of the Abpromise, please visit <https://www.abcam.com/abpromise> or contact our technical team.

Terms and conditions

- Guarantee only valid for products bought direct from Abcam or one of our authorized distributors