

## Product datasheet

# Anti-TREM2 antibody [EPR23177-106] αb245227

Recombinant RabMAb

[2 References](#) [3 Images](#)

### Overview

Product name	Anti-TREM2 antibody [EPR23177-106]
Description	Rabbit monoclonal [EPR23177-106] to TREM2
Host species	Rabbit
Tested applications	<b>Suitable for:</b> Flow Cyt, ICC/IF <b>Unsuitable for:</b> IHC-P, IP or WB
Species reactivity	<b>Reacts with:</b> Mouse
Immunogen	Recombinant fragment. This information is proprietary to Abcam and/or its suppliers.
Positive control	ICC/IF: RAW 264.7 cells. Flow Cyt: RAW 267.4 cells.
General notes	This product is a recombinant monoclonal antibody, which offers several advantages including: <ul style="list-style-type: none"> <li>- High batch-to-batch consistency and reproducibility</li> <li>- Improved sensitivity and specificity</li> <li>- Long-term security of supply</li> <li>- Animal-free production</li> </ul> For more information <a href="#">see here</a> . Our RabMAb <sup>®</sup> technology is a patented hybridoma-based technology for making rabbit monoclonal antibodies. For details on our patents, please refer to <a href="#">RabMAb<sup>®</sup> patents</a> .

### Properties

Form	Liquid
Storage instructions	Shipped at 4°C. Store at +4°C short term (1-2 weeks). Upon delivery aliquot. Store at -20°C long term. Avoid freeze / thaw cycle.
Storage buffer	pH: 7.2 Preservative: 0.01% Sodium azide Constituents: PBS, 40% Glycerol (glycerin, glycerine), 0.05% BSA
Purity	Protein A purified
Clonality	Monoclonal
Clone number	EPR23177-106
Isotype	IgG

## Applications

**The Abpromise guarantee** Our **Abpromise guarantee** covers the use of ab245227 in the following tested applications. The application notes include recommended starting dilutions; optimal dilutions/concentrations should be determined by the end user.

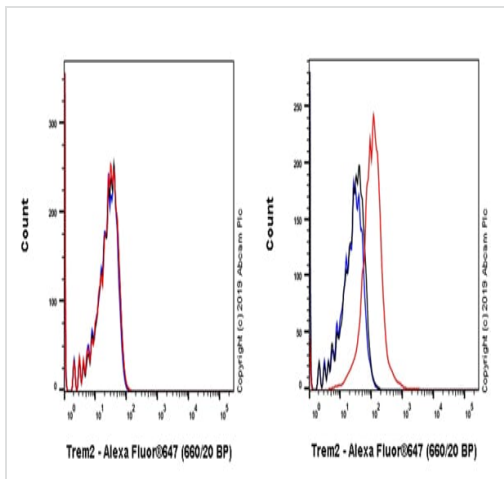
Application	Abreviews	Notes
Flow Cyt		1/60.
ICC/IF		1/100.

**Application notes** Is unsuitable for IHC-P, IP or WB.

## Target

<b>Function</b>	May have a role in chronic inflammations and may stimulate production of constitutive rather than inflammatory chemokines and cytokines. Forms a receptor signaling complex with TYROBP and triggers activation of the immune responses in macrophages and dendritic cells.
<b>Tissue specificity</b>	Expressed on macrophages and dendritic cells but not on granulocytes or monocytes. In the CNS strongest expression seen in the basal ganglia, corpus callosum, medulla oblongata and spinal cord.
<b>Involvement in disease</b>	Defects in TREM2 are a cause of polycystic lipomembranous osteodysplasia with sclerosing leukoencephalopathy (PLOS) [MIM:221770]; also known as presenile dementia with bone cysts or Nasu-Hakola disease (NHD). PLOS is a recessively inherited disease characterized by a combination of psychotic symptoms rapidly progressing to presenile dementia and bone cysts restricted to wrists and ankles. PLOS has a global distribution, although most of the patients have been diagnosed in Finland and Japan, with an estimated population prevalence of $2 \times 10^{-6}$ in the Finns.
<b>Sequence similarities</b>	Contains 1 Ig-like V-type (immunoglobulin-like) domain.
<b>Cellular localization</b>	Secreted and Cell membrane.

## Images



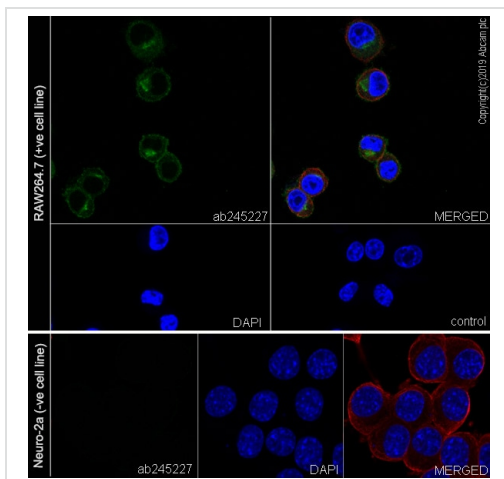
Flow Cytometry - Anti-TREM2 antibody [EPR23177-106] (ab245227)

Flow cytometric analysis of Neuro-2a (Mouse neuroblastoma neuroblast, Left) / RAW 264.7 (Mouse Abelson murine leukemia virus-induced tumor macrophage, Right) cells labelling Trem2 with ab245227 at 1/60 dilution (Red) compared with a Rabbit monoclonal IgG (**ab172730**) (Black) isotype control and an unlabelled control (cells without incubation with primary antibody and secondary antibody) (Blue). Goat anti rabbit IgG (Alexa Fluor® 647, **ab150079**) at 1/2000 dilution was used as the secondary antibody.

**Negative control:** Neuro-2a (PMID: 19302484).

Gated on viable cells.

Brighter secondary antibody like Alexa Fluor® 647 is required to get desirable staining.



Immunocytochemistry/ Immunofluorescence - Anti-TREM2 antibody [EPR23177-106] (ab245227)

Immunofluorescent analysis of 4% Paraformaldehyde-fixed, 0.1% TritonX-100 permeabilized RAW 264.7 (mouse Abelson murine leukemia virus-induced tumor macrophage) cells labelling Trem2 with ab245227 at 1/100 dilution, followed by **ab150077** AlexaFluor®488 Goat anti-Rabbit secondary antibody at 1/1000 dilution (Green). Confocal image showing cytoplasmic and staining in RAW 264.7 cell line. **Negative control:** Neuro-2a (PMID: 19302484). **ab195889** Anti-alpha Tubulin antibody [DM1A] - Microtubule Marker (Alexa Fluor® 594) was used to counterstain tubulin at 1/200 dilution (Red). The Nuclear counterstain was DAPI (Blue).

Secondary antibody only control: Secondary antibody is **ab150077** AlexaFluor®488 Goat anti-Rabbit secondary at 1/1000 dilution.

Why choose a recombinant antibody?

**Research with confidence**  
Consistent and reproducible results

**Long-term and scalable supply**  
Recombinant technology

**Success from the first experiment**  
Confirmed specificity

**Ethical standards compliant**  
Animal-free production

Anti-TREM2 antibody [EPR23177-106] (ab245227)

**Please note:** All products are "FOR RESEARCH USE ONLY. NOT FOR USE IN DIAGNOSTIC PROCEDURES"

### **Our Abpromise to you: Quality guaranteed and expert technical support**

---

- Replacement or refund for products not performing as stated on the datasheet
- Valid for 12 months from date of delivery
- Response to your inquiry within 24 hours
  
- We provide support in Chinese, English, French, German, Japanese and Spanish
- Extensive multi-media technical resources to help you
- We investigate all quality concerns to ensure our products perform to the highest standards

If the product does not perform as described on this datasheet, we will offer a refund or replacement. For full details of the Abpromise, please visit <https://www.abcam.com/abpromise> or contact our technical team.

### **Terms and conditions**

---

- Guarantee only valid for products bought direct from Abcam or one of our authorized distributors