

Product datasheet

Anti-TREM2 antibody [EPR23177-106] - BSA and Azide free ab269868

Recombinant RabMAb

3 Images

Overview

Product name	Anti-TREM2 antibody [EPR23177-106] - BSA and Azide free
Description	Rabbit monoclonal [EPR23177-106] to TREM2 - BSA and Azide free
Host species	Rabbit
Tested applications	Suitable for: Flow Cyt, ICC/IF Unsuitable for: IHC-P, IP or WB
Species reactivity	Reacts with: Mouse
Immunogen	Recombinant fragment. This information is proprietary to Abcam and/or its suppliers.
Positive control	ICC/IF: RAW 264.7 cells. Flow Cyt: RAW 264.7 cells.
General notes	ab269868 is the carrier-free version of ab245227 . Our carrier-free antibodies are typically supplied in a PBS-only formulation, purified and free of BSA, sodium azide and glycerol. The carrier-free buffer and high concentration allow for increased conjugation efficiency. This conjugation-ready format is designed for use with fluorochromes, metal isotopes, oligonucleotides, and enzymes, which makes them ideal for antibody labelling, functional and cell-based assays, flow-based assays (e.g. mass cytometry) and Multiplex Imaging applications. Use our conjugation kits for antibody conjugates that are ready-to-use in as little as 20 minutes with <1 minute hands-on-time and 100% antibody recovery: available for fluorescent dyes, HRP, biotin and gold. This product is compatible with the Maxpar [®] Antibody Labeling Kit from Fluidigm, without the need for antibody preparation. Maxpar [®] is a trademark of Fluidigm Canada Inc. Our RabMAb [®] technology is a patented hybridoma-based technology for making rabbit monoclonal antibodies. For details on our patents, please refer to RabMAb[®] patents .

Properties

Form	Liquid
Storage instructions	Shipped at 4°C. Store at +4°C. Do Not Freeze.

Storage buffer	pH: 7.2 Constituent: PBS
Carrier free	Yes
Purity	Protein A purified
Clonality	Monoclonal
Clone number	EPR23177-106
Isotype	IgG

Applications

The Abpromise guarantee Our **Abpromise guarantee** covers the use of ab269868 in the following tested applications. The application notes include recommended starting dilutions; optimal dilutions/concentrations should be determined by the end user.

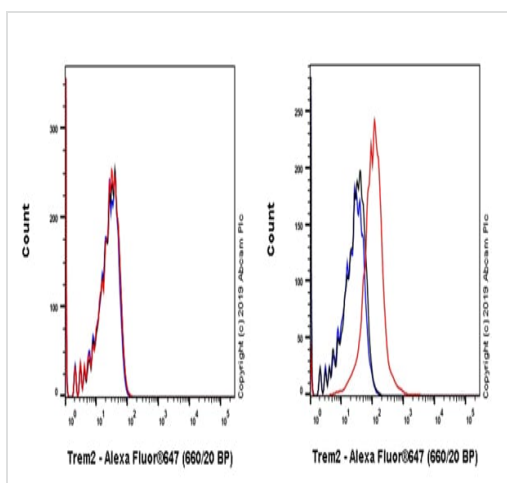
Application	Abreviews	Notes
Flow Cyt		Use at an assay dependent concentration.
ICC/IF		Use at an assay dependent concentration.

Application notes Is unsuitable for IHC-P, IP or WB.

Target

Function	May have a role in chronic inflammations and may stimulate production of constitutive rather than inflammatory chemokines and cytokines. Forms a receptor signaling complex with TYROBP and triggers activation of the immune responses in macrophages and dendritic cells.
Tissue specificity	Expressed on macrophages and dendritic cells but not on granulocytes or monocytes. In the CNS strongest expression seen in the basal ganglia, corpus callosum, medulla oblongata and spinal cord.
Involvement in disease	Defects in TREM2 are a cause of polycystic lipomembranous osteodysplasia with sclerosing leukoencephalopathy (PLOSL) [MIM:221770]; also known as presenile dementia with bone cysts or Nasu-Hakola disease (NHD). PLOSL is a recessively inherited disease characterized by a combination of psychotic symptoms rapidly progressing to presenile dementia and bone cysts restricted to wrists and ankles. PLOSL has a global distribution, although most of the patients have been diagnosed in Finland and Japan, with an estimated population prevalence of 2x10 ⁻⁶ in the Finns.
Sequence similarities	Contains 1 Ig-like V-type (immunoglobulin-like) domain.
Cellular localization	Secreted and Cell membrane.

Images



Flow Cytometry - Anti-TREM2 antibody [EPR23177-106] - BSA and Azide free (ab269868)

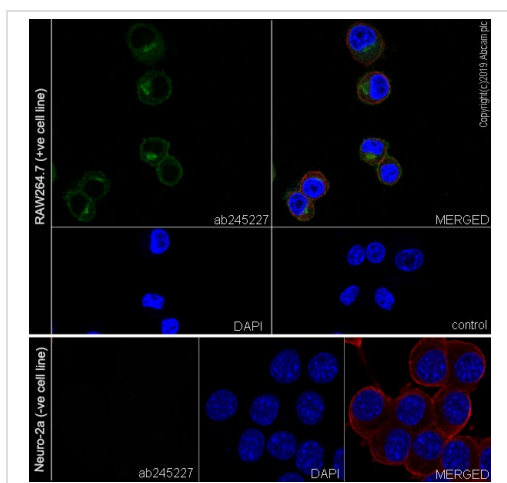
Flow cytometric analysis of Neuro-2a (Mouse neuroblastoma neuroblast, Left) / RAW 264.7 (Mouse Abelson murine leukemia virus-induced tumor macrophage, Right) cells labelling Trem2 with **ab245227** at 1/60 dilution (Red) compared with a Rabbit monoclonal IgG (**ab172730**) (Black) isotype control and an unlabelled control (cells without incubation with primary antibody and secondary antibody) (Blue). Goat anti rabbit IgG (Alexa Fluor® 647, **ab150079**) at 1/2000 dilution was used as the secondary antibody.

Negative control: Neuro-2a (PMID: 19302484).

Gated on viable cells.

Brighter secondary antibody like Alexa Fluor® 647 is required to get desirable staining.

This data was developed using the same antibody clone in a different buffer formulation containing PBS, BSA, glycerol, and sodium azide (**ab245227**).



Immunocytochemistry/ Immunofluorescence - Anti-TREM2 antibody [EPR23177-106] - BSA and Azide free (ab269868)

Immunofluorescent analysis of 4% Paraformaldehyde-fixed, 0.1% TritonX-100 permeabilized RAW 264.7 (mouse Abelson murine leukemia virus-induced tumor macrophage) cells labelling Trem2 with **ab245227** at 1/100 dilution, followed by **ab150077** AlexaFluor®488 Goat anti-Rabbit secondary antibody at 1/1000 dilution (Green). Confocal image showing cytoplasmic and staining in RAW 264.7 cell line. **Negative control:** Neuro-2a (PMID: 19302484). **ab195889** Anti-alpha Tubulin antibody [DM1A] - Microtubule Marker (Alexa Fluor® 594) was used to counterstain tubulin at 1/200 dilution (Red). The Nuclear counterstain was DAPI (Blue).

Secondary antibody only control: Secondary antibody is **ab150077** AlexaFluor®488 Goat anti-Rabbit secondary at 1/1000 dilution.

This data was developed using the same antibody clone in a different buffer formulation containing PBS, BSA, glycerol, and sodium azide (**ab245227**).

Why choose a recombinant antibody?



Research with confidence
Consistent and reproducible results



Long-term and scalable supply
Recombinant technology



Success from the first experiment
Confirmed specificity



Ethical standards compliant
Animal-free production

Anti-TREM2 antibody [EPR23177-106] - BSA and Azide free (ab269868)

Please note: All products are "FOR RESEARCH USE ONLY. NOT FOR USE IN DIAGNOSTIC PROCEDURES"

Our Abpromise to you: Quality guaranteed and expert technical support

- Replacement or refund for products not performing as stated on the datasheet
- Valid for 12 months from date of delivery
- Response to your inquiry within 24 hours
- We provide support in Chinese, English, French, German, Japanese and Spanish
- Extensive multi-media technical resources to help you
- We investigate all quality concerns to ensure our products perform to the highest standards

If the product does not perform as described on this datasheet, we will offer a refund or replacement. For full details of the Abpromise, please visit <https://www.abcam.com/abpromise> or contact our technical team.

Terms and conditions

- Guarantee only valid for products bought direct from Abcam or one of our authorized distributors