


Anti-Treslin antibody ab124268

★★★★★ [1 Abreviews](#) [2 Images](#)

Overview

Product name	Anti-Treslin antibody
Description	Rabbit polyclonal to Treslin
Host species	Rabbit
Tested applications	Suitable for: WB
Species reactivity	Reacts with: Human Predicted to work with: Horse, Chimpanzee, Rhesus monkey, Gorilla, Chinese hamster, Orngutan 
Immunogen	Synthetic peptide corresponding to Human Treslin aa 950-1050. Database link: Q7ZZ1
Positive control	WB: 293T whole cell lysate
General notes	<p>The Life Science industry has been in the grips of a reproducibility crisis for a number of years. Abcam is leading the way in addressing this with our range of recombinant monoclonal antibodies and knockout edited cell lines for gold-standard validation. Please check that this product meets your needs before purchasing.</p> <p>If you have any questions, special requirements or concerns, please send us an inquiry and/or contact our Support team ahead of purchase. Recommended alternatives for this product can be found below, along with publications, customer reviews and Q&As</p>

Properties

Form	Liquid
Storage instructions	Shipped at 4°C. Upon delivery aliquot and store at -20°C. Avoid freeze / thaw cycles.
Storage buffer	pH: 7 Preservative: 0.09% Sodium azide Constituent: 99% Tris citrate/phosphate pH 7 to 8
Purity	Immunogen affinity purified
Purification notes	ab124268 was affinity purified using an epitope specific to Treslin immobilized on solid support.
Clonality	Polyclonal

Isotype

IgG

Applications

The Abpromise guarantee

Our **Abpromise guarantee** covers the use of ab124268 in the following tested applications.

The application notes include recommended starting dilutions; optimal dilutions/concentrations should be determined by the end user.

Application	Abreviews	Notes
WB	★★★★★ (1)	1/500 - 1/2500. Predicted molecular weight: 211 kDa.

Target

Function

Regulator of DNA replication and S/M and G2/M checkpoints. Regulates the triggering of DNA replication initiation via its interaction with TOPBP1 by participating to CDK2-mediated loading of CDC45L onto replication origins. Required for the transition from pre-replication complex (pre-RC) to pre-initiation complex (pre-IC). Required to prevent mitotic entry after treatment with ionizing radiation.

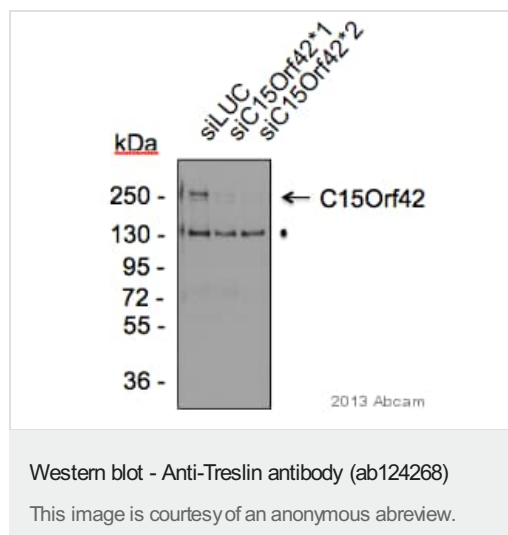
Sequence similarities

Belongs to the treslin family.

Cellular localization

Nucleus. Associates with chromatin.

Images



All lanes : Anti-Treslin antibody (ab124268) at 1/1000 dilution

Lane 1 : 293 whole cell lysate treated with control siLUC RNAi

Lanes 2-3 : 293 whole cell lysate treated with RNAi targeting Treslin

Lysates/proteins at 50 µg per lane.

Secondary

All lanes : Donkey Anti-Rabbit IgG H&L (HRP) (**ab16284**) at 1/20000 dilution

Developed using the ECL technique.

Performed under reducing conditions.

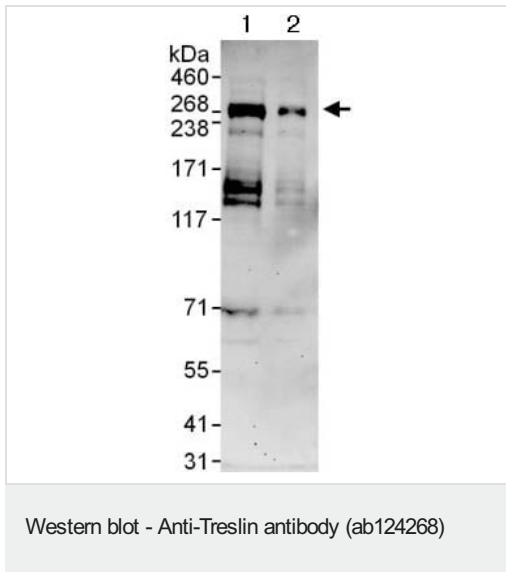
Predicted band size: 211 kDa

Observed band size: 250 kDa

Additional bands at: 130 kDa (possible non-specific binding)

Exposure time: 2 minutes

Blocking: 5% milk



All lanes : Anti-Treslin antibody (ab124268) at 0.4 µg/ml

Lane 1 : 293T whole cell lysate at 50 µg

Lane 2 : 293T whole cell lysate at 15 µg

Developed using the ECL technique.

Predicted band size: 211 kDa

Exposure time: 3 minutes

Please note: All products are "FOR RESEARCH USE ONLY. NOT FOR USE IN DIAGNOSTIC PROCEDURES"

Our Abpromise to you: Quality guaranteed and expert technical support

- Replacement or refund for products not performing as stated on the datasheet
- Valid for 12 months from date of delivery
- Response to your inquiry within 24 hours
- We provide support in Chinese, English, French, German, Japanese and Spanish
- Extensive multi-media technical resources to help you
- We investigate all quality concerns to ensure our products perform to the highest standards

If the product does not perform as described on this datasheet, we will offer a refund or replacement. For full details of the Abpromise, please visit <https://www.abcam.com/abpromise> or contact our technical team.

Terms and conditions

- Guarantee only valid for products bought direct from Abcam or one of our authorized distributors