


# Anti-TREX1 antibody ab83890

[2 References](#) [3 Images](#)

## Overview

<b>Product name</b>	Anti-TREX1 antibody
<b>Description</b>	Rabbit polyclonal to TREX1
<b>Host species</b>	Rabbit
<b>Specificity</b>	This antibody will not cross-react with the related protein TREX2.
<b>Tested applications</b>	<b>Suitable for:</b> ICC/IF, WB, IHC-P
<b>Species reactivity</b>	<b>Reacts with:</b> Human <b>Predicted to work with:</b> Mouse 
<b>Immunogen</b>	Synthetic peptide. This information is proprietary to Abcam and/or its suppliers.
<b>General notes</b>	<p>The mouse cross reactivity is lot specific. Please contact technical team for more information.</p> <p>The Life Science industry has been in the grips of a reproducibility crisis for a number of years. Abcam is leading the way in addressing this with our range of recombinant monoclonal antibodies and knockout edited cell lines for gold-standard validation. Please check that this product meets your needs before purchasing.</p> <p>If you have any questions, special requirements or concerns, please send us an inquiry and/or contact our Support team ahead of purchase. Recommended alternatives for this product can be found below, along with publications, customer reviews and Q&amp;As</p>

## Properties

<b>Form</b>	Liquid
<b>Storage instructions</b>	Shipped at 4°C. Store at +4°C.
<b>Storage buffer</b>	pH: 7.2 Preservative: 0.02% Sodium azide Constituent: PBS
<b>Purity</b>	Immunogen affinity purified
<b>Clonality</b>	Polyclonal
<b>Isotype</b>	IgG

## Applications

## The Abpromise guarantee

Our **Abpromise guarantee** covers the use of ab83890 in the following tested applications.

The application notes include recommended starting dilutions; optimal dilutions/concentrations should be determined by the end user.

Application	Abreviews	Notes
ICC/IF		Use a concentration of 20 µg/ml.
WB		Use a concentration of 1 - 2 µg/ml. Detects a band of approximately 31 kDa (predicted molecular weight: 39 kDa).
IHC-P		Use a concentration of 2.5 µg/ml.

## Target

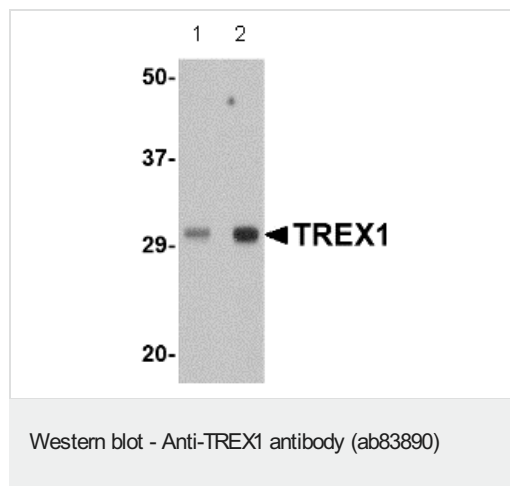
### Relevance

TREX1 is the major 3'→5' DNA exonuclease in human cells. The protein is a non processive exonuclease that may serve a proofreading function for a human DNA polymerase. It is also a component of the SET complex, and acts to rapidly degrade 3' ends of nicked DNA during granzyme A mediated cell death. Mutations in this gene result in Aicardi Goutieres syndrome, chilblain lupus, and Cree encephalitis. Multiple transcript variants encoding different isoforms have been found for this gene.

### Cellular localization

Cytoplasmic, Endoplasmic reticulum and Nuclear

## Images



**Lane 1 :** Anti-TREX1 antibody (ab83890) at 0.5 µg/ml

**Lane 2 :** Anti-TREX1 antibody (ab83890) at 1 µg/ml

**All lanes :** Human spleen tissue lysate

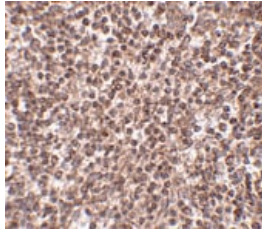
Lysates/proteins at 15 µg per lane.

**Secondary**

**All lanes :** anti-rabbit secondary

**Predicted band size:** 39 kDa

**Observed band size:** 31 kDa



ab83890 at 2.5µg/ml staining TREX1 in Human spleen tissue.

Immunohistochemistry (Formalin/PFA-fixed paraffin-embedded sections) - Anti-TREX1 antibody (ab83890)

Immunocytochemistry/ Immunofluorescence - Anti-TREX1 antibody (ab83890)

Immunofluorescence of TREX1 in Human Spleen cells using ab83890 at 20 ug/ml.

**Please note:** All products are "FOR RESEARCH USE ONLY. NOT FOR USE IN DIAGNOSTIC PROCEDURES"

### Our Abpromise to you: Quality guaranteed and expert technical support

---

- Replacement or refund for products not performing as stated on the datasheet
- Valid for 12 months from date of delivery
- Response to your inquiry within 24 hours
- We provide support in Chinese, English, French, German, Japanese and Spanish
- Extensive multi-media technical resources to help you
- We investigate all quality concerns to ensure our products perform to the highest standards

If the product does not perform as described on this datasheet, we will offer a refund or replacement. For full details of the Abpromise, please visit <https://www.abcam.com/abpromise> or contact our technical team.

### Terms and conditions

---

- Guarantee only valid for products bought direct from Abcam or one of our authorized distributors