

## Product datasheet

# Anti-TRIB3 antibody [EPR3150] ab75774

KO VALIDATED Recombinant RabMAb

3 Images

### Overview

<b>Product name</b>	Anti-TRIB3 antibody [EPR3150]
<b>Description</b>	Rabbit monoclonal [EPR3150] to TRIB3
<b>Host species</b>	Rabbit
<b>Tested applications</b>	<b>Suitable for:</b> WB <b>Unsuitable for:</b> Flow Cyt, ICC/IF, IHC-P or IP
<b>Species reactivity</b>	<b>Reacts with:</b> Human
<b>Immunogen</b>	Synthetic peptide within Human TRIB3 aa 50-150. The exact sequence is proprietary.
<b>Positive control</b>	293T lysates, untreated or treated with Ionomycin and TPA. WB: HeLa cell lysate.
<b>General notes</b>	<p>This product is a recombinant monoclonal antibody, which offers several advantages including:</p> <ul style="list-style-type: none"><li>- High batch-to-batch consistency and reproducibility</li><li>- Improved sensitivity and specificity</li><li>- Long-term security of supply</li><li>- Animal-free production</li></ul> <p>For more information <a href="#">see here</a>.</p> <p>Our RabMAb<sup>®</sup> technology is a patented hybridoma-based technology for making rabbit monoclonal antibodies. For details on our patents, please refer to <a href="#">RabMAb<sup>®</sup> patents</a>.</p> <p>Mouse, Rat: We have preliminary internal testing data to indicate this antibody may not react with these species. Please contact us for more information.</p>

### Properties

<b>Form</b>	Liquid
<b>Storage instructions</b>	Shipped at 4°C. Upon delivery aliquot and store at -20°C. Avoid freeze / thaw cycles.
<b>Storage buffer</b>	pH: 7.20 Preservative: 0.01% Sodium azide Constituents: 9% PBS, 40% Glycerol (glycerin, glycerine), 0.05% BSA, 50% Tissue culture supernatant
<b>Purity</b>	Protein A purified
<b>Clonality</b>	Monoclonal

Clone number                   EPR3150  
Isotype                            IgG

## Applications

---

**The Abpromise guarantee**           Our **Abpromise guarantee** covers the use of ab75774 in the following tested applications. The application notes include recommended starting dilutions; optimal dilutions/concentrations should be determined by the end user.

Application	Abreviews	Notes
WB		1/1000 - 1/10000. Detects a band of approximately 40 kDa (predicted molecular weight: 40 kDa).

**Application notes**                    Is unsuitable for Flow Cyt, ICC/IF, IHC-P or IP.

## Target

---

**Function**                                Disrupts insulin signaling by binding directly to Akt kinases and blocking their activation. May bind directly to and mask the 'Thr-308' phosphorylation site in AKT1. Binds to ATF4 and inhibits its transcriptional activation activity. Interacts with the NF-kappa-B transactivator p65 RELA and inhibits its phosphorylation and thus its transcriptional activation activity. Interacts with MAPK kinases and regulates activation of MAP kinases. May play a role in programmed neuronal cell death but does not appear to affect non-neuronal cells. Does not display kinase activity.

**Tissue specificity**                    Highest expression in liver, pancreas, peripheral blood leukocytes and bone marrow. Also highly expressed in a number of primary lung, colon and breast tumors. Expressed in spleen, thymus, and prostate and is undetectable in other examined tissues, including testis, ovary, small intestine, colon, leukocyte, heart, brain, placenta, lung, skeletal muscle, and kidney.

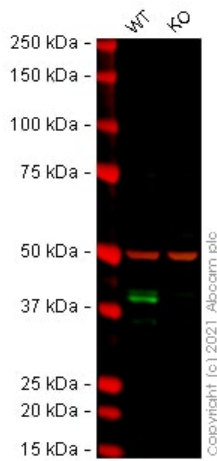
**Sequence similarities**                Belongs to the protein kinase superfamily. CAMK Ser/Thr protein kinase family. Tribbles subfamily.  
Contains 1 protein kinase domain.

**Cellular localization**                Nucleus.

---

## Images

---



Western blot - Anti-TRIB3 antibody [EPR3150]  
(ab75774)

**All lanes** : Anti-TRIB3 antibody [EPR3150] (ab75774) at 1/1000 dilution

**Lane 1** : Wild-type HeLa cell lysate

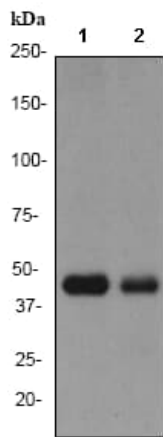
**Lane 2** : TRIB3 knockout HeLa cell lysate

Performed under reducing conditions.

**Predicted band size:** 40 kDa

**Observed band size:** 40 kDa

False colour image of Western blot: Anti-TRIB3 antibody [EPR3150] staining at 1/1000 dilution, shown in green; Mouse anti-Alpha Tubulin [DM1A] ([ab7291](#)) loading control staining at 1/20000 dilution, shown in red. In Western blot, ab75774 was shown to bind specifically to TRIB3. A band was observed at 40 kDa in wild-type HeLa cell lysates with no signal observed at this size in TRIB3 knockout cell line [ab264792](#) (knockout cell lysate [ab257765](#)). To generate this image, wild-type and TRIB3 knockout HeLa cell lysates were analysed. First, samples were run on an SDS-PAGE gel then transferred onto a nitrocellulose membrane. Membranes were blocked in 3 % milk in TBS-0.1 % Tween<sup>®</sup> 20 (TBS-T) before incubation with primary antibodies overnight at 4°C. Blots were washed four times in TBS-T, incubated with secondary antibodies for 1 h at room temperature, washed again four times then imaged. Secondary antibodies used were Goat anti-Rabbit IgG H&L (IRDye<sup>®</sup> 800CW) preabsorbed ([ab216773](#)) and Goat anti-Mouse IgG H&L (IRDye<sup>®</sup> 680RD) preabsorbed ([ab216776](#)) at 1/20000 dilution.



Western blot - Anti-TRIB3 antibody [EPR3150] (ab75774)

**All lanes** : Anti-TRIB3 antibody [EPR3150] (ab75774) at 1/1000 dilution

**Lane 1** : 293T lysates, treated with lonomycin and TPA

**Lane 2** : 293T lysates, untreated

Lysates/proteins at 10 µg per lane.





**Secondary**

**All lanes** : goat anti-rabbit HRP at 1/1000 dilution

**Predicted band size:** 40 kDa

**Observed band size:** 40 kDa

Why choose a recombinant antibody?

 <p><b>Research with confidence</b> Consistent and reproducible results</p>	 <p><b>Long-term and scalable supply</b> Recombinant technology</p>
 <p><b>Success from the first experiment</b> Confirmed specificity</p>	 <p><b>Ethical standards compliant</b> Animal-free production</p>

Anti-TRIB3 antibody [EPR3150] (ab75774)

**Please note:** All products are "FOR RESEARCH USE ONLY. NOT FOR USE IN DIAGNOSTIC PROCEDURES"

**Our Abpromise to you: Quality guaranteed and expert technical support**

- Replacement or refund for products not performing as stated on the datasheet
- Valid for 12 months from date of delivery
- Response to your inquiry within 24 hours
- We provide support in Chinese, English, French, German, Japanese and Spanish
- Extensive multi-media technical resources to help you
- We investigate all quality concerns to ensure our products perform to the highest standards

If the product does not perform as described on this datasheet, we will offer a refund or replacement. For full details of the Abpromise, please visit <https://www.abcam.com/abpromise> or contact our technical team.

## Terms and conditions

---

- Guarantee only valid for products bought direct from Abcam or one of our authorized distributors