

## Product datasheet

# Anti-TRIM13 antibody ab234847

[1 References](#) [3 Images](#)

### Overview

---

|                            |   |
|----------------------------|---|
| <b>Product name</b>        | Anti-TRIM13 antibody  |
| <b>Description</b>         | Rabbit polyclonal to TRIM13   |
| <b>Host species</b>        | Rabbit  |
| <b>Tested applications</b> | <b>Suitable for:</b> WB, IHC-P  |
| <b>Species reactivity</b>  | <b>Reacts with:</b> Human   |
| <b>Immunogen</b>           | Recombinant fragment corresponding to Human TRIM13 aa 40-310.<br>Database link: <a href="#">O60858</a>  |
| <b>Positive control</b>    | WB: HEK-293T and HeLa whole cell lysate. IHC-P: Human breast cancer and brain tissue.   |
| <b>General notes</b>       | <p>The Life Science industry has been in the grips of a reproducibility crisis for a number of years. Abcam is leading the way in addressing this with our range of recombinant monoclonal antibodies and knockout edited cell lines for gold-standard validation. Please check that this product meets your needs before purchasing.</p> <p>If you have any questions, special requirements or concerns, please send us an inquiry and/or contact our Support team ahead of purchase. Recommended alternatives for this product can be found below, along with publications, customer reviews and Q&amp;As</p> |

### Properties

---

|                             |   |
|-----------------------------|---|
| <b>Form</b>                 | Liquid  |
| <b>Storage instructions</b> | Shipped at 4°C. Store at +4°C short term (1-2 weeks). Upon delivery aliquot. Store at -20°C long term. Avoid freeze / thaw cycle. |
| <b>Storage buffer</b>       | pH: 7.30<br>Preservative: 0.02% Sodium azide<br>Constituents: PBS, 50% Glycerol (glycerin, glycerine)                             |
| <b>Purity</b>               | Immunogen affinity purified   |
| <b>Clonality</b>            | Polyclonal  |
| <b>Isotype</b>              | IgG   |

### Applications

---

## The Abpromise guarantee

Our **Abpromise guarantee** covers the use of ab234847 in the following tested applications.

The application notes include recommended starting dilutions; optimal dilutions/concentrations should be determined by the end user.

| Application | Abreviews | Notes  |
|-------------|-----------|--|
| WB          |           | 1/1000 - 1/5000. Predicted molecular weight: 47 kDa. |
| IHC-P       |           | 1/20 - 1/200.  |

## Target

### Function

E3 ubiquitin ligase involved in the retrotranslocation and turnover of membrane and secretory proteins from the ER through a set of processes named ER-associated degradation (ERAD). This process acts on misfolded proteins as well as in the regulated degradation of correctly folded proteins. Enhances ionizing radiation-induced p53/TP53 stability and apoptosis via ubiquitinating MDM2 and AKT1 and decreasing AKT1 kinase activity through MDM2 and AKT1 proteasomal degradation. Regulates ER stress-induced autophagy, and may act as a tumor suppressor.

### Pathway

Protein modification; protein ubiquitination.

### Sequence similarities

Belongs to the TRIM/RBCC family.

Contains 1 B box-type zinc finger.

Contains 1 RING-type zinc finger.

### Domain

The coiled-coil domain is required for the induction of autophagy during endoplasmic reticulum (ER) stress.

The RING-type zinc finger is required for auto-polyubiquitination.

The C-terminal domain transmembrane domain is indispensable for the localization to the ER.

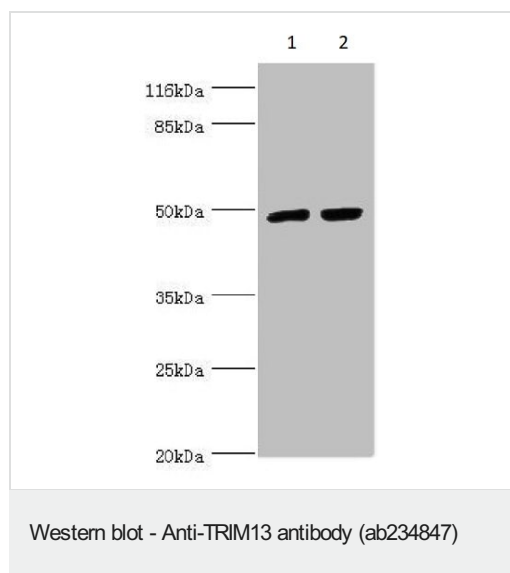
### Post-translational modifications

Auto-ubiquitinated; requires the RING-type zinc finger. Auto-polyubiquitination leads to proteasomal degradation.

### Cellular localization

Endoplasmic reticulum membrane. Concentrates and colocalizes with p62/SQSTM1 and ZFYVE1 at the perinuclear endoplasmic reticulum.

## Images



**All lanes :** Anti-TRIM13 antibody (ab234847) at 1/1000 dilution

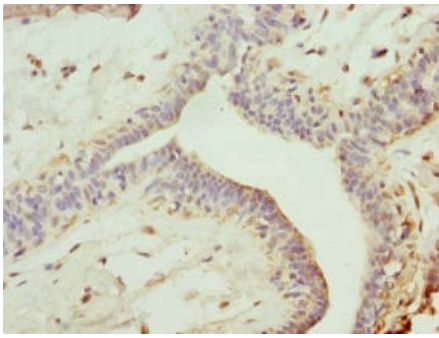
**Lane 1 :** HEK-293T (human epithelial cell line from embryonic kidney transformed with large T antigen) whole cell lysate

**Lane 2 :** HeLa (human epithelial cell line from cervix adenocarcinoma) whole cell lysate

### Secondary

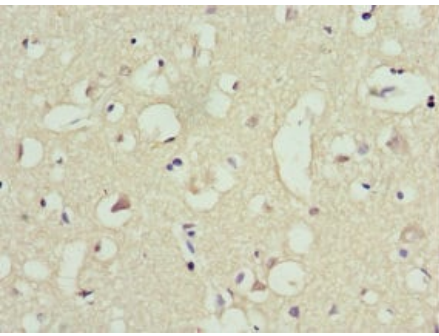
**All lanes :** Goat polyclonal to rabbit IgG at 1/10000 dilution

**Predicted band size:** 47 kDa



Paraffin-embedded human breast cancer tissue stained for TRIM13 with ab234847 at 1/100 dilution in immunohistochemical analysis.

Immunohistochemistry (Formalin/PFA-fixed paraffin-embedded sections) - Anti-TRIM13 antibody (ab234847)



Paraffin-embedded human brain tissue stained for TRIM13 with ab234847 at 1/100 dilution in immunohistochemical analysis.

Immunohistochemistry (Formalin/PFA-fixed paraffin-embedded sections) - Anti-TRIM13 antibody (ab234847)

**Please note:** All products are "FOR RESEARCH USE ONLY. NOT FOR USE IN DIAGNOSTIC PROCEDURES"

### **Our Abpromise to you: Quality guaranteed and expert technical support**

---

- Replacement or refund for products not performing as stated on the datasheet
- Valid for 12 months from date of delivery
- Response to your inquiry within 24 hours
- We provide support in Chinese, English, French, German, Japanese and Spanish
- Extensive multi-media technical resources to help you
- We investigate all quality concerns to ensure our products perform to the highest standards

If the product does not perform as described on this datasheet, we will offer a refund or replacement. For full details of the Abpromise, please visit <https://www.abcam.com/abpromise> or contact our technical team.

### **Terms and conditions**

---

- Guarantee only valid for products bought direct from Abcam or one of our authorized distributors