


Anti-TRIM16 antibody ab72129

[2 References](#) [2 Images](#)

Overview

Product name	Anti-TRIM16 antibody
Description	Rabbit polyclonal to TRIM16
Host species	Rabbit
Tested applications	Suitable for: WB, IP
Species reactivity	Reacts with: Mouse, Human Predicted to work with: Horse, Guinea pig, Cow, Chimpanzee, Rhesus monkey, Gorilla, Orangutan, Bat, Elephant 
Immunogen	Synthetic peptide corresponding to a region between residues 1 and 50 of human TRIM16, NP_006461.3.
Positive control	Whole cell lysate from Hela, 293T and NIH 3T3 cells.
General notes	<p>The Life Science industry has been in the grips of a reproducibility crisis for a number of years. Abcam is leading the way in addressing this with our range of recombinant monoclonal antibodies and knockout edited cell lines for gold-standard validation. Please check that this product meets your needs before purchasing.</p> <p>If you have any questions, special requirements or concerns, please send us an inquiry and/or contact our Support team ahead of purchase. Recommended alternatives for this product can be found below, along with publications, customer reviews and Q&As</p>

Properties

Form	Liquid
Storage instructions	Shipped at 4°C. Upon delivery aliquot and store at -20°C. Avoid freeze / thaw cycles.
Storage buffer	pH: 6.8 Preservative: 0.09% Sodium azide Constituents: 0.1% BSA, Tris buffered saline
Purity	Immunogen affinity purified
Clonality	Polyclonal
Isotype	IgG

Applications

The Abpromise guarantee

Our **Abpromise guarantee** covers the use of ab72129 in the following tested applications.

The application notes include recommended starting dilutions; optimal dilutions/concentrations should be determined by the end user.

Application	Abreviews	Notes
WB		1/2000 - 1/10000. Detects a band of approximately 70 kDa (predicted molecular weight: 64 kDa).
IP		Use at 2-5 µg/mg of lysate.

Target

Function

May play a role in the regulation of keratinocyte differentiation.

Tissue specificity

Highest levels found in testis, ovary, small intestine, colon, placenta, heart, skeletal muscle and mammary gland. More highly expressed in the fetus than in the corresponding adult tissues. Expressed in basal keratinocytes.

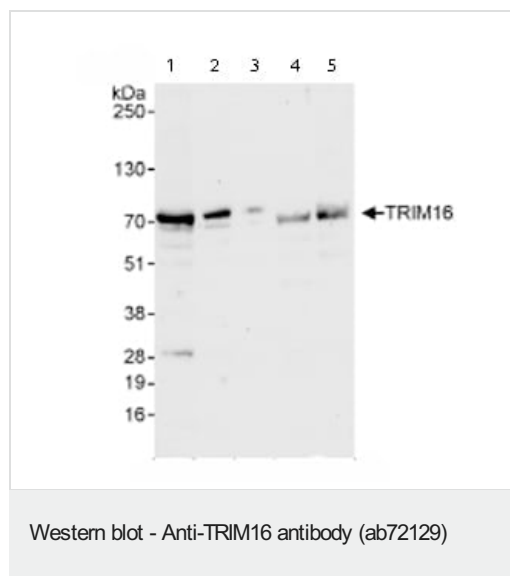
Sequence similarities

Belongs to the TRIM/RBCC family.
Contains 2 B box-type zinc fingers.
Contains 1 B30.2/SPRY domain.

Cellular localization

Cytoplasm.

Images



All lanes : Anti-TRIM16 antibody (ab72129) at 0.04 µg/ml

Lane 1 : Whole cell lysate from HeLa cells at 50 µg

Lane 2 : Whole cell lysate from HeLa cells at 15 µg

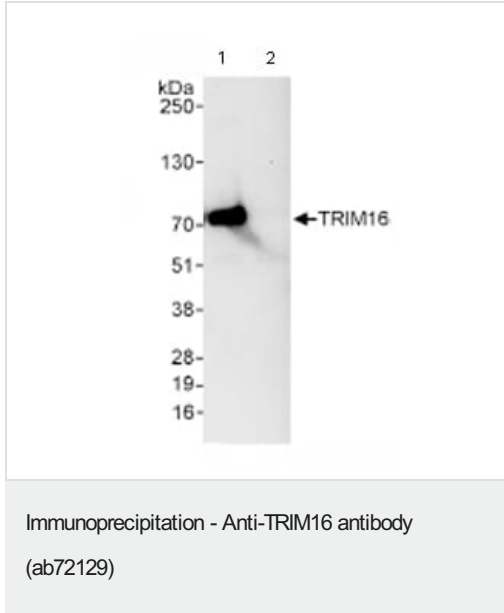
Lane 3 : Whole cell lysate from HeLa cells at 5 µg

Lane 4 : Whole cell lysate from 293T cells at 50 µg

Lane 5 : Whole cell lysate from NIH3T3 cells at 50 µg

Predicted band size: 64 kDa

Observed band size: 70 kDa



Immunoprecipitation/ Western Blot of TRIM16.

Lane 1: ab72129 at 3µg/mg whole cell lysate.

Lane 2: Control IgG.

ab72129 at 1µg/ml for WB.

Whole cell lysate from Hela cells at 1mg for IP, 20% of IP loaded.

Detection: Chemiluminescence with an exposure time of 10 seconds.

Please note: All products are "FOR RESEARCH USE ONLY. NOT FOR USE IN DIAGNOSTIC PROCEDURES"

Our Abpromise to you: Quality guaranteed and expert technical support

- Replacement or refund for products not performing as stated on the datasheet
- Valid for 12 months from date of delivery
- Response to your inquiry within 24 hours
- We provide support in Chinese, English, French, German, Japanese and Spanish
- Extensive multi-media technical resources to help you
- We investigate all quality concerns to ensure our products perform to the highest standards

If the product does not perform as described on this datasheet, we will offer a refund or replacement. For full details of the Abpromise, please visit <https://www.abcam.com/abpromise> or contact our technical team.

Terms and conditions

- Guarantee only valid for products bought direct from Abcam or one of our authorized distributors