



Product datasheet

Anti-TRIM21/SS-A antibody ab4369

[1 References](#) [2 Images](#)

Overview

Product name	Anti-TRIM21/SS-A antibody
Description	Goat polyclonal to TRIM21/SS-A
Host species	Goat
Tested applications	Suitable for: Flow Cyt (Intra), ICC/IF
Species reactivity	Reacts with: Human
Immunogen	Synthetic peptide corresponding to TRIM21/SS-A aa 463-475 (N terminal). Sequence: CPLNIGSQGSTDY (Peptide available as ab23028)  Run BLAST with  Run BLAST with
Positive control	ICC/IF: U2OS cells. Flow Cyt (intra): HeLa cells.
General notes	<p>The Life Science industry has been in the grips of a reproducibility crisis for a number of years. Abcam is leading the way in addressing this with our range of recombinant monoclonal antibodies and knockout edited cell lines for gold-standard validation. Please check that this product meets your needs before purchasing.</p> <p>If you have any questions, special requirements or concerns, please send us an inquiry and/or contact our Support team ahead of purchase. Recommended alternatives for this product can be found below, along with publications, customer reviews and Q&As</p>

Properties

Form	Liquid
Storage instructions	Shipped at 4°C. Upon delivery aliquot and store at -20°C or -80°C. Avoid repeated freeze / thaw cycles.
Storage buffer	pH: 7.30 Preservative: 0.02% Sodium azide Constituents: Tris buffered saline, 0.5% BSA
Purity	Immunogen affinity purified
Purification notes	Purified from goat serum by ammonium sulphate precipitation followed by antigen affinity chromatography using the immunizing peptide.

Clonality	Polyclonal
Isotype	IgG

Applications

The Abpromise guarantee Our **Abpromise guarantee** covers the use of ab4369 in the following tested applications.

The application notes include recommended starting dilutions; optimal dilutions/concentrations should be determined by the end user.

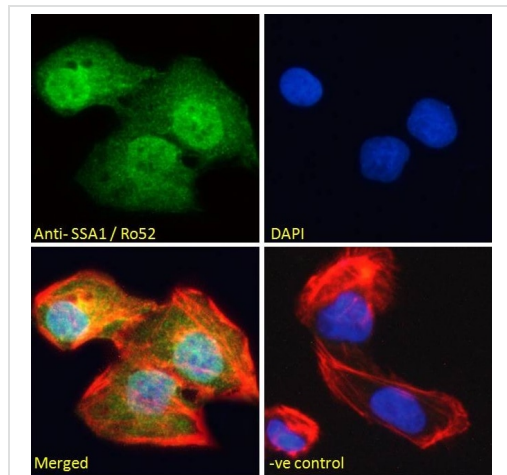
Application	Abreviews	Notes
Flow Cyt (Intra)		Use a concentration of 10 µg/ml.
ICC/IF		Use a concentration of 10 µg/ml.

Target

Function	E3 ubiquitin-protein ligase whose activity is dependent on E2 enzymes, UBE2D1, UBE2D2, UBE2E1 and UBE2E2. Forms a ubiquitin ligase complex in cooperation with the E2 UBE2D2 that is used not only for the ubiquitination of USP4 and IKBKB but also for its self-ubiquitination. Component of cullin-RING-based SCF (SKP1-CUL1-F-box protein) E3 ubiquitin-protein ligase complexes such as SCF(SKP2)-like complexes. A TRIM21-containing SCF(SKP2)-like complex is shown to mediate ubiquitination of CDKN1B ('Thr-187' phosphorylated-form), thereby promoting its degradation by the proteasome. Monoubiquitinates IKBKB that will negatively regulates Tax-induced NF-kappa-B signaling. Negatively regulates IFN-beta production post-pathogen recognition by polyubiquitin-mediated degradation of IRF3. Mediates the ubiquitin-mediated proteasomal degradation of IgG1 heavy chain, which is linked to the VCP-mediated ER-associated degradation (ERAD) pathway. Promotes IRF8 ubiquitination, which enhanced the ability of IRF8 to stimulate cytokine genes transcription in macrophages. Plays a role in the regulation of the cell cycle progression. Enhances the decapping activity of DCP2. Exists as a ribonucleoprotein particle present in all mammalian cells studied and composed of a single polypeptide and one of four small RNA molecules. At least two isoforms are present in nucleated and red blood cells, and tissue specific differences in RO/SSA proteins have been identified. The common feature of these proteins is their ability to bind HY RNAs.2.
Tissue specificity	Isoforms 1 and 2 are expressed in fetal and adult heart and fetal lung.
Pathway	Protein modification; protein ubiquitination.
Sequence similarities	Belongs to the TRIM/RBCC family. Contains 1 B box-type zinc finger. Contains 1 B30.2/SPRY domain. Contains 1 RING-type zinc finger.
Domain	The coiled-coil is necessary for the cytoplasmic localization. The B30.2/SPRY domain is necessary for the cytoplasmic localization, the interaction with IRF3 and for the IRF3-driven interferon beta promoter activity. The RING-type zinc finger is necessary for ubiquitination and for the IRF3-driven interferon beta promoter activity. Interacts with SKP2 and CUL1 in a RING finger-independent manner.
Post-translational modifications	Autoubiquitinated; does not lead to its proteasomal degradation. Deubiquitinated by USP4; leading to its stabilization.
Cellular localization	Cytoplasm. Nucleus. Cytoplasm > P-body. Enters the nucleus upon exposure to nitric oxide.

Localizes to small dot- or rod-like structures in the cytoplasm, called cytoplasmic bodies (P-body) that are located underneath the plasma membrane and also diffusely in the cytoplasm and are highly motile in cells. Cytoplasmic bodies are located along the microtubules and do not share the same cytoplasmic bodies with TRIM5. Colocalizes with DCP2 in P-body.

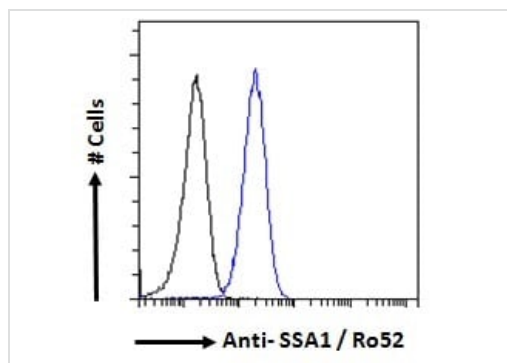
Images



Immunocytochemistry/ Immunofluorescence - Anti-TRIM21/SS-A antibody (ab4369)

Immunocytochemistry/Immunofluorescence analysis of U2OS cells labelling TRIM21/SS-A with ab4369 at 10 µg/ml. Cells were paraformaldehyde fixed and permeabilized with 0.15% triton. Primary antibody incubation was for 1 hour followed by incubation with an Alexa Fluor® 488-conjugated secondary antibody at 2 µg/ml. DAPI nuclear counterstain was used.

Negative control: Unimmunized goat IgG (10 µg/ml) followed by an Alexa Fluor® 488-conjugated secondary antibody (2 µg/ml).



Flow Cytometry (Intracellular) - Anti-TRIM21/SS-A antibody (ab4369)

Flow cytometry analysis of HeLa cells labelling TRIM21/SS-A with ab4369 (blue line) at 10 µg/ml. Cells were fixed with paraformaldehyde and permeabilized with 0.5% Triton. Incubated with the primary antibody for 1 hour followed by incubation with Alexa Fluor® 488-conjugated secondary antibody at 1 µg/ml.

IgG control: Unimmunized goat IgG (black line) followed by Alexa Fluor® 488-conjugated secondary antibody.

Please note: All products are "FOR RESEARCH USE ONLY. NOT FOR USE IN DIAGNOSTIC PROCEDURES"

Our Promise to you: Quality guaranteed and expert technical support

- Replacement or refund for products not performing as stated on the datasheet
- Valid for 12 months from date of delivery
- Response to your inquiry within 24 hours
- We provide support in Chinese, English, French, German, Japanese and Spanish
- Extensive multi-media technical resources to help you

- We investigate all quality concerns to ensure our products perform to the highest standards

If the product does not perform as described on this datasheet, we will offer a refund or replacement. For full details of the Abpromise, please visit <https://www.abcam.com/abpromise> or contact our technical team.

Terms and conditions

- Guarantee only valid for products bought direct from Abcam or one of our authorized distributors