


Product datasheet

Anti-TRIM44 antibody [OT1E10] ab236422

[7 References](#) [11 Images](#)

Overview

Product name	Anti-TRIM44 antibody [OT1E10]
Description	Mouse monoclonal [OT1E10] to TRIM44
Host species	Mouse
Tested applications	Suitable for: WB, IHC-P, ICC/IF
Species reactivity	Reacts with: Human, Recombinant fragment Predicted to work with: Mouse, Rat, Orangutan 
Immunogen	Recombinant full length protein corresponding to Human TRIM44 aa 1 to the C-terminus. (NP_060053) produced in HEK-293T cells. Database link: Q96DX7 Run BLAST with Run BLAST with
Positive control	WB: HEK-293T transfected with pCMV6-ENTRY TRIM44, whole cell lysate. IHC-P: Human breast, kidney, liver, liver carcinoma, pancreas, endometrium, bladder carcinoma, lymphoma and tonsil tissue. ICC/IF: COS-7 cells transiently transfected with pCMV6-ENTRY TRIM44.
General notes	Clone OT1E10 (formerly 1E10). The Life Science industry has been in the grips of a reproducibility crisis for a number of years. Abcam is leading the way in addressing this with our range of recombinant monoclonal antibodies and knockout edited cell lines for gold-standard validation. Please check that this product meets your needs before purchasing. If you have any questions, special requirements or concerns, please send us an inquiry and/or contact our Support team ahead of purchase. Recommended alternatives for this product can be found below, along with publications, customer reviews and Q&As

Properties

Form	Liquid
Storage instructions	Shipped at 4°C. Store at +4°C short term (1-2 weeks). Upon delivery aliquot. Store at -20°C long term. Avoid freeze / thaw cycle.
Storage buffer	pH: 7.30 Preservative: 0.02% Sodium azide Constituents: 1% BSA, 50% Glycerol, PBS
Purity	Affinity purified

Purification notes	Purified from cell culture supernatant.
Clonality	Monoclonal
Clone number	OT1E10
Isotype	IgG1

Applications

The Abpromise guarantee Our **Abpromise guarantee** covers the use of ab236422 in the following tested applications.

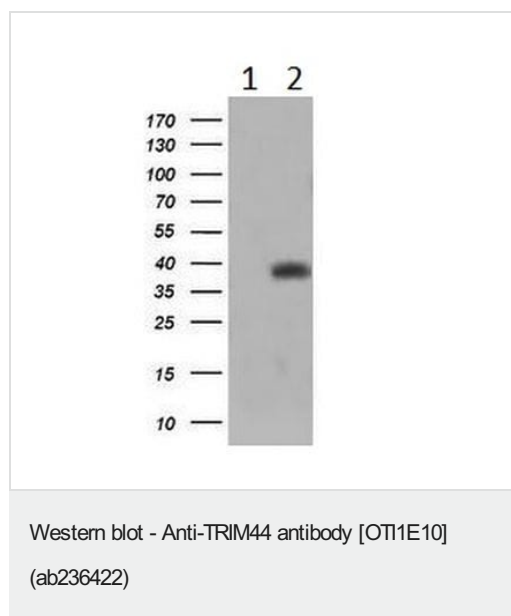
The application notes include recommended starting dilutions; optimal dilutions/concentrations should be determined by the end user.

Application	Abreviews	Notes
WB		1/2000. Predicted molecular weight: 38 kDa.
IHC-P		1/150. Heat-induced epitope retrieval by 10 mM citric buffer, pH 6.0, 100°C for 10 minutes.
ICC/IF		1/100.

Target

Function	May play a role in the process of differentiation and maturation of neuronal cells (By similarity). May regulate the activity of TRIM17.
Tissue specificity	Highly expressed in testis.
Sequence similarities	Contains 1 B box-type zinc finger.

Images



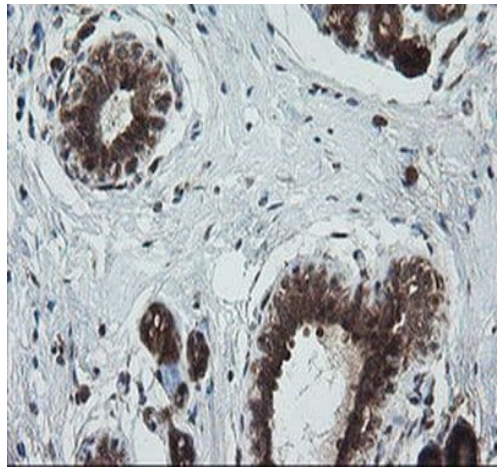
All lanes : Anti-TRIM44 antibody [OT1E10] (ab236422) at 1/2000 dilution

Lane 1 : HEK-293T (human epithelial cell line from embryonic kidney transformed with large T antigen) transfected with pCMV6-ENTRY control cell lysate

Lane 2 : HEK-293T (human epithelial cell line from embryonic kidney transformed with large T antigen) transfected with pCMV6-ENTRY TRIM44 cell lysate

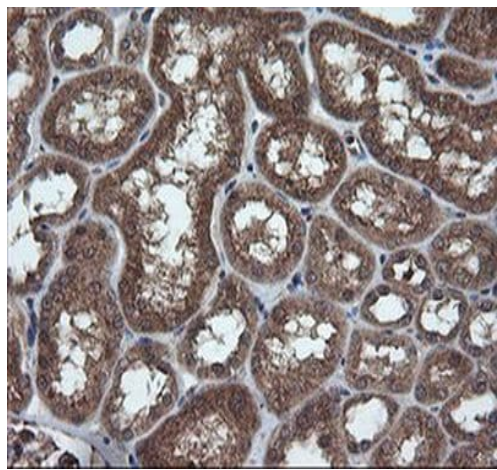
Lysates/proteins at 5 µg per lane.

Predicted band size: 38 kDa



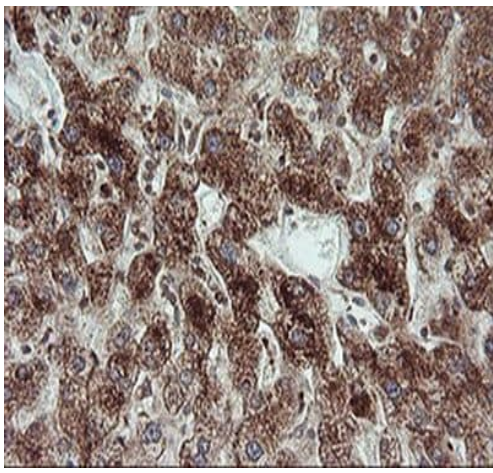
Paraffin-embedded human breast tissue stained for TRIM44 using ab236422 at 1/150 dilution in immunohistochemical analysis.

Immunohistochemistry (Formalin/PFA-fixed paraffin-embedded sections) - Anti-TRIM44 antibody [OT1E10] (ab236422)



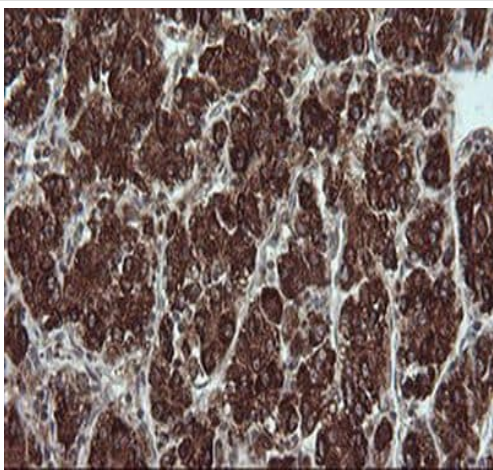
Paraffin-embedded human kidney tissue stained for TRIM44 using ab236422 at 1/150 dilution in immunohistochemical analysis.

Immunohistochemistry (Formalin/PFA-fixed paraffin-embedded sections) - Anti-TRIM44 antibody [OT1E10] (ab236422)



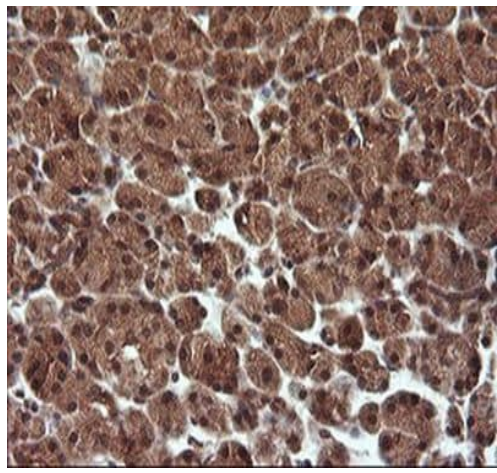
Immunohistochemistry (Formalin/PFA-fixed paraffin-embedded sections) - Anti-TRIM44 antibody [OT1E10] (ab236422)

Paraffin-embedded human liver tissue stained for TRIM44 using ab236422 at 1/150 dilution in immunohistochemical analysis.



Immunohistochemistry (Formalin/PFA-fixed paraffin-embedded sections) - Anti-TRIM44 antibody [OT1E10] (ab236422)

Paraffin-embedded human liver cancer tissue stained for TRIM44 using ab236422 at 1/150 dilution in immunohistochemical analysis.



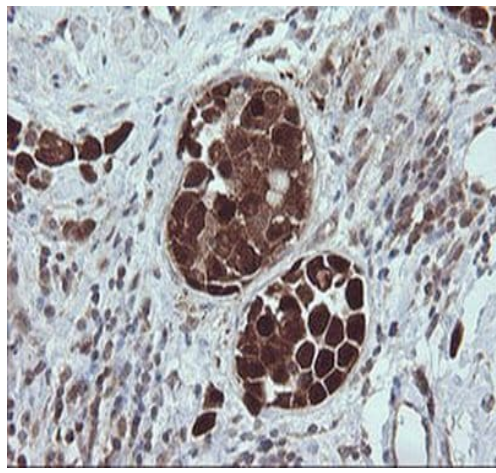
Immunohistochemistry (Formalin/PFA-fixed paraffin-embedded sections) - Anti-TRIM44 antibody [OT1E10] (ab236422)

Paraffin-embedded human pancreas tissue stained for TRIM44 using ab236422 at 1/150 dilution in immunohistochemical analysis.



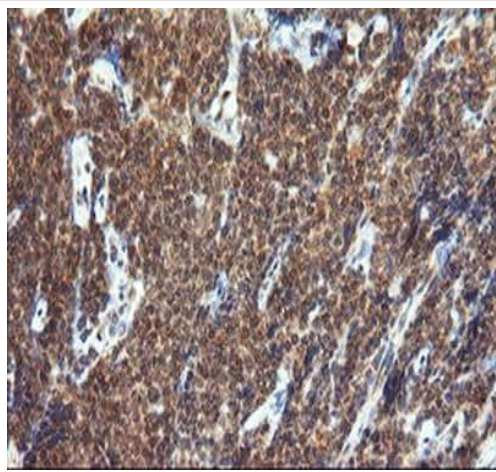
Immunohistochemistry (Formalin/PFA-fixed paraffin-embedded sections) - Anti-TRIM44 antibody [OT1E10] (ab236422)

Paraffin-embedded human endometrium tissue stained for TRIM44 using ab236422 at 1/150 dilution in immunohistochemical analysis.



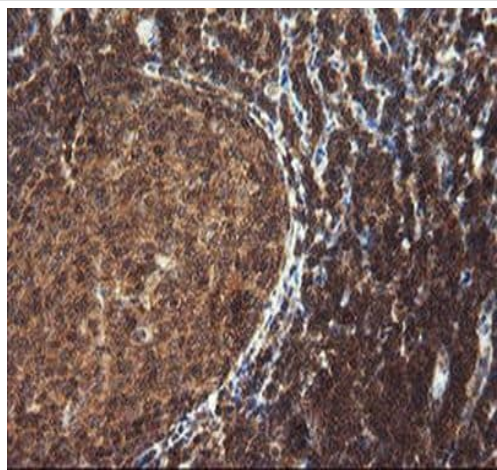
Paraffin-embedded human bladder carcinoma tissue stained for TRIM44 using ab236422 at 1/150 dilution in immunohistochemical analysis.

Immunohistochemistry (Formalin/PFA-fixed paraffin-embedded sections) - Anti-TRIM44 antibody [OT1E10] (ab236422)



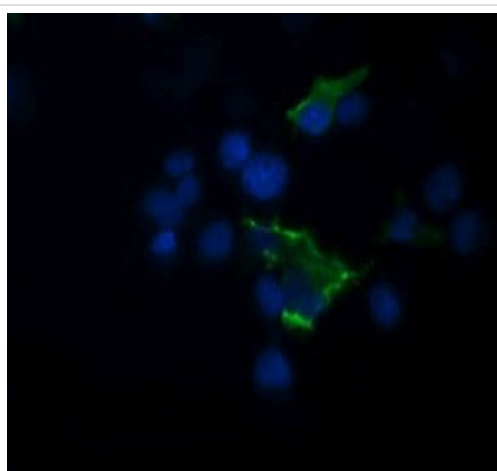
Paraffin-embedded human lymphoma tissue stained for TRIM44 using ab236422 at 1/150 dilution in immunohistochemical analysis.

Immunohistochemistry (Formalin/PFA-fixed paraffin-embedded sections) - Anti-TRIM44 antibody [OT1E10] (ab236422)



Paraffin-embedded human tonsil tissue stained for TRIM44 using ab236422 at 1/150 dilution in immunohistochemical analysis.

Immunohistochemistry (Formalin/PFA-fixed paraffin-embedded sections) - Anti-TRIM44 antibody [OT1E10] (ab236422)



COS-7 (human epithelial cell line from cervix adenocarcinoma) cells transiently transfected with pCMV6-ENTRY TRIM44 stained for TRIM44 (green) using ab236422 at 1/100 dilution in ICC/IF.

Immunocytochemistry/ Immunofluorescence - Anti-TRIM44 antibody [OT1E10] (ab236422)

Please note: All products are "FOR RESEARCH USE ONLY. NOT FOR USE IN DIAGNOSTIC PROCEDURES"

Our Abpromise to you: Quality guaranteed and expert technical support

- Replacement or refund for products not performing as stated on the datasheet
- Valid for 12 months from date of delivery
- Response to your inquiry within 24 hours
- We provide support in Chinese, English, French, German, Japanese and Spanish
- Extensive multi-media technical resources to help you
- We investigate all quality concerns to ensure our products perform to the highest standards

If the product does not perform as described on this datasheet, we will offer a refund or replacement. For full details of the Abpromise, please visit <https://www.abcam.com/abpromise> or contact our technical team.

Terms and conditions

- Guarantee only valid for products bought direct from Abcam or one of our authorized distributors