

Anti-Tropomodulin 2 antibody ab67407

★★★★★ [3 Abreviews](#) [4 References](#) [2 Images](#)

Overview

Product name	Anti-Tropomodulin 2 antibody
Description	Mouse polyclonal to Tropomodulin 2
Host species	Mouse
Specificity	ab67407 is reactive against mammalian transfected lysate
Tested applications	Suitable for: WB
Species reactivity	Reacts with: Human
Immunogen	Recombinant full length protein within Human Tropomodulin 2 aa 1-400. The exact immunogen sequence used to generate this antibody is proprietary information. If additional detail on the immunogen is needed to determine the suitability of the antibody for your needs, please contact our Scientific Support team to discuss your requirements.
Positive control	ICC: Murine Neuroblastoma (N1E-115) cells. WB: Tropomodulin 2 transfected 293T lysate, N1E-115 mouse neuroblastoma.
General notes	<p>The Life Science industry has been in the grips of a reproducibility crisis for a number of years. Abcam is leading the way in addressing this with our range of recombinant monoclonal antibodies and knockout edited cell lines for gold-standard validation. Please check that this product meets your needs before purchasing.</p> <p>If you have any questions, special requirements or concerns, please send us an inquiry and/or contact our Support team ahead of purchase. Recommended alternatives for this product can be found below, along with publications, customer reviews and Q&As</p>

Properties

Form	Liquid
Storage instructions	Shipped at 4°C. Upon delivery aliquot and store at -20°C. Avoid freeze / thaw cycles.
Storage buffer	pH: 7.4 Constituent: PBS
Purity	Protein A purified
Clonality	Polyclonal
Isotype	IgG

Applications

The Abpromise guarantee

Our **Abpromise guarantee** covers the use of ab67407 in the following tested applications.

The application notes include recommended starting dilutions; optimal dilutions/concentrations should be determined by the end user.

Application	Abreviews	Notes
WB	★★★★★ (2)	1/500 - 1/1000. Detects a band of approximately 39.6 kDa.

Target

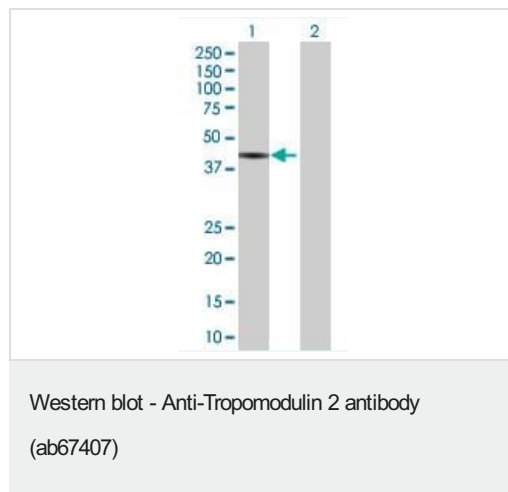
Relevance

Tropomodulin is the actin-capping protein for the slow growing end of filamentous actin. Tropomodulin 2 is a neuronal specific isoform which is the major binding protein to brain tropomyosin in rat.

Cellular localization

Cytoplasm; cytoskeleton

Images



All lanes : Anti-Tropomodulin 2 antibody (ab67407) at 1/500 dilution

Lane 1 : Tropomodulin 2 transfected 293T lysate

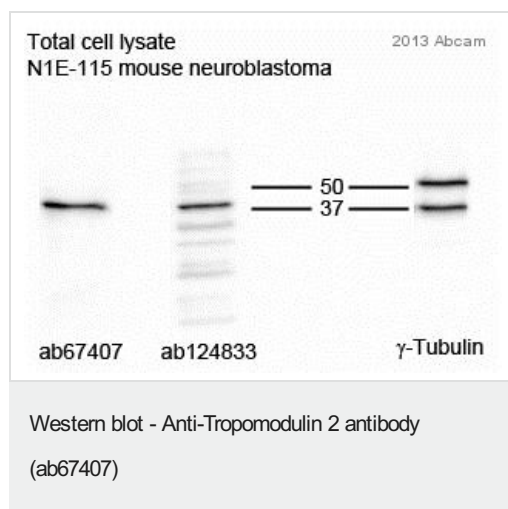
Lane 2 : Non transfected 293T lysate

Lysates/proteins at 25 µg per lane.

Secondary

All lanes : Goat Anti-Mouse IgG (H&L)-HRP Conjugate at 1/2500 dilution

Observed band size: 39.6 kDa



Lane 1 : Anti-Tropomodulin 2 antibody (ab67407) at 1/1000 dilution

Lane 2 : Anti-Tropomodulin 2 antibody [EPR6353] (**ab124833**) at 1/1000 dilution

All lanes : N1E-115 mouse neuroblastoma

Lysates/proteins at 20 µg per lane.

Secondary

All lanes : Polyclonal HRP conjugate at 1/5000 dilution

Please note: All products are "FOR RESEARCH USE ONLY. NOT FOR USE IN DIAGNOSTIC PROCEDURES"

Our Abpromise to you: Quality guaranteed and expert technical support

- Replacement or refund for products not performing as stated on the datasheet
- Valid for 12 months from date of delivery
- Response to your inquiry within 24 hours
- We provide support in Chinese, English, French, German, Japanese and Spanish
- Extensive multi-media technical resources to help you
- We investigate all quality concerns to ensure our products perform to the highest standards

If the product does not perform as described on this datasheet, we will offer a refund or replacement. For full details of the Abpromise, please visit <https://www.abcam.com/abpromise> or contact our technical team.

Terms and conditions

- Guarantee only valid for products bought direct from Abcam or one of our authorized distributors