


Product datasheet

Anti-Tropomodulin 2 antibody [EPR6353] ab124833

Recombinant RabMAb

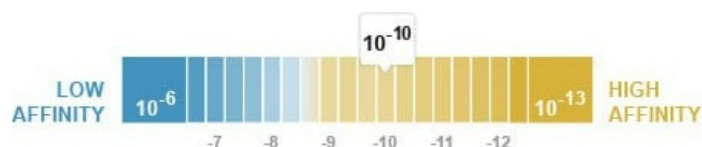
★★★★☆ [2 Abreviews](#) [1 References](#) [4 Images](#)

Overview

Product name	Anti-Tropomodulin 2 antibody [EPR6353]
Description	Rabbit monoclonal [EPR6353] to Tropomodulin 2
Host species	Rabbit
Tested applications	Suitable for: WB, IHC-P Unsuitable for: Flow Cyt
Species reactivity	Reacts with: Human Predicted to work with: Mouse, Rat 
Immunogen	Synthetic peptide within Human Tropomodulin 2 (N terminal). The exact sequence is proprietary.
Positive control	Fetal brain and SH-SY5Y cell lysates; Human brain tissue.
General notes	<p>This product is a recombinant monoclonal antibody, which offers several advantages including:</p> <ul style="list-style-type: none"> - High batch-to-batch consistency and reproducibility - Improved sensitivity and specificity - Long-term security of supply - Animal-free production <p>For more information see here.</p> <p>Our RabMAb[®] technology is a patented hybridoma-based technology for making rabbit monoclonal antibodies. For details on our patents, please refer to RabMAb[®] patents.</p>

Properties

Form	Liquid
Storage instructions	Shipped at 4°C. Store at -20°C. Stable for 12 months at -20°C.
Dissociation constant (K _D)	K _D = 1.28 x 10 ⁻¹⁰ M



[Learn more about K_D](#)

Storage buffer	pH: 7.20
----------------	----------

	Preservative: 0.05% Sodium azide
	Constituents: 40% Glycerol (glycerin, glycerine), 9.85% Tris glycine, 50% Tissue culture supernatant
Purity	Protein A purified
Clonality	Monoclonal
Clone number	EPR6353
Isotype	IgG

Applications

The Abpromise guarantee Our **Abpromise guarantee** covers the use of ab124833 in the following tested applications. The application notes include recommended starting dilutions; optimal dilutions/concentrations should be determined by the end user.

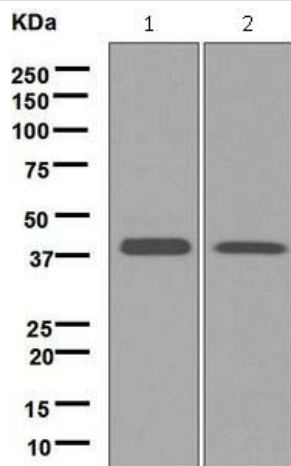
Application	Abreviews	Notes
WB	★★★★★ (1)	1/10000 - 1/50000. Detects a band of approximately 40 kDa (predicted molecular weight: 40 kDa).
IHC-P		1/250 - 1/500. Perform heat mediated antigen retrieval before commencing with IHC staining protocol.

Application notes Is unsuitable for Flow Cyt.

Target

Relevance	Tropomodulin is the actin-capping protein for the slow growing end of filamentous actin. Tropomodulin 2 is a neuronal specific isoform which is the major binding protein to brain tropomyosin in rat.
Cellular localization	Cytoplasm; cytoskeleton

Images



Western blot - Anti-Tropomodulin 2 antibody
[EPR6353] (ab124833)

All lanes : Anti-Tropomodulin 2 antibody [EPR6353] (ab124833) at
1/10000 dilution

Lane 1 : Fetal brain tissue lysate

Lane 2 : SH-SY5Y cell lysate

Lysates/proteins at 10 µg per lane.

Secondary

All lanes : HRP labelled goat anti-rabbit at 1/2000 dilution

Predicted band size: 40 kDa

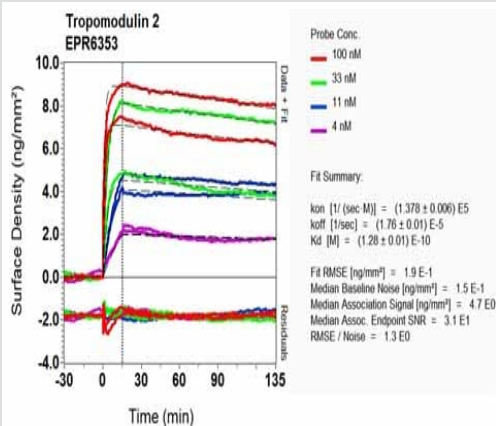
Observed band size: 40 kDa



Immunohistochemistry (Formalin/PFA-fixed paraffin-
embedded sections) - Anti-Tropomodulin 2 antibody
[EPR6353] (ab124833)

ab124833, at 1/250 dilution, staining Tropomodulin 2 in paraffin-
embedded Human brain tissue by Immunohistochemistry.

Perform heat mediated antigen retrieval before commencing with
IHC staining protocol.



OIR-D Scanning - Anti-Tropomodulin 2 antibody
[EPR6353] (ab124833)

Equilibrium disassociation constant (K_D)

Learn more about K_D

[Click here to learn more about \$K_D\$](#)

Why choose a recombinant antibody?



Research with confidence
Consistent and reproducible results



Long-term and scalable supply
Recombinant technology



Success from the first experiment
Confirmed specificity



Ethical standards compliant
Animal-free production

Anti-Tropomodulin 2 antibody [EPR6353] (ab124833)

Please note: All products are "FOR RESEARCH USE ONLY. NOT FOR USE IN DIAGNOSTIC PROCEDURES"

Our Abpromise to you: Quality guaranteed and expert technical support

- Replacement or refund for products not performing as stated on the datasheet
- Valid for 12 months from date of delivery
- Response to your inquiry within 24 hours
- We provide support in Chinese, English, French, German, Japanese and Spanish
- Extensive multi-media technical resources to help you
- We investigate all quality concerns to ensure our products perform to the highest standards

If the product does not perform as described on this datasheet, we will offer a refund or replacement. For full details of the Abpromise, please visit <https://www.abcam.com/abpromise> or contact our technical team.

Terms and conditions

- Guarantee only valid for products bought direct from Abcam or one of our authorized distributors