

Product datasheet

Anti-TSHZ1 antibody ab140196

★☆☆☆☆ [1 Abreviews](#) [3 Images](#)

Overview

Product name	Anti-TSHZ1 antibody
Description	Rabbit polyclonal to TSHZ1
Host species	Rabbit
Tested applications	Suitable for: ICC/IF, WB, ICC
Species reactivity	Reacts with: Mouse
Immunogen	Synthetic peptide. This information is proprietary to Abcam and/or its suppliers.
Positive control	A 20 cells and cell lysate.
General notes	<p>The Life Science industry has been in the grips of a reproducibility crisis for a number of years. Abcam is leading the way in addressing this with our range of recombinant monoclonal antibodies and knockout edited cell lines for gold-standard validation. Please check that this product meets your needs before purchasing.</p> <p>If you have any questions, special requirements or concerns, please send us an inquiry and/or contact our Support team ahead of purchase. Recommended alternatives for this product can be found below, along with publications, customer reviews and Q&As</p>

Properties

Form	Liquid
Storage instructions	Shipped at 4°C. Store at +4°C short term (1-2 weeks). Upon delivery aliquot. Store at -20°C long term.
Storage buffer	pH: 7.2 Preservative: 0.02% Sodium azide Constituent: 99% PBS
Purity	Immunogen affinity purified
Clonality	Polyclonal
Isotype	IgG

Applications

The Abpromise guarantee Our **Abpromise guarantee** covers the use of ab140196 in the following tested applications.

The application notes include recommended starting dilutions; optimal dilutions/concentrations should be determined by the end user.

Application	Abreviews	Notes
ICC/IF		Use a concentration of 20 µg/ml.
WB		Use a concentration of 1 µg/ml. Predicted molecular weight: 118 kDa.
ICC		Use a concentration of 2.5 µg/ml.

Target

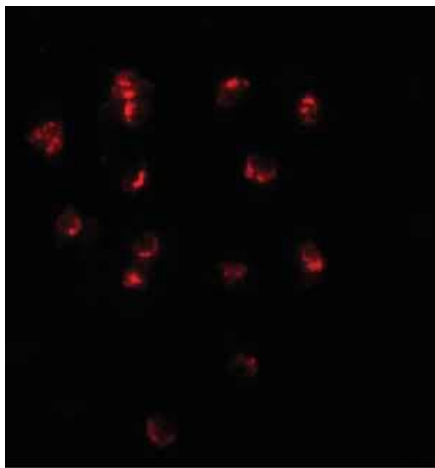
Relevance

This gene (TSHZ1) encodes a colon cancer antigen which was defined by serological analysis of recombinant cDNA expression libraries. The encoded protein is a member of the teashirt C2H2-type zinc-finger protein family and may be involved in transcriptional regulation of developmental processes.

Cellular localization

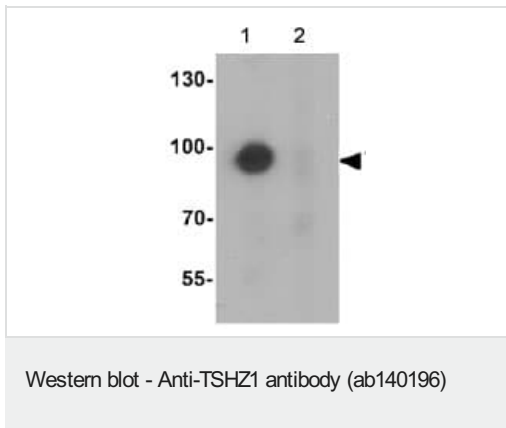
Nuclear

Images



Immunofluorescence of TSHZ1 in A20 cells with ab140196 at 20 ug/mL.

Immunocytochemistry/ Immunofluorescence - Anti-TSHZ1 antibody (ab140196)



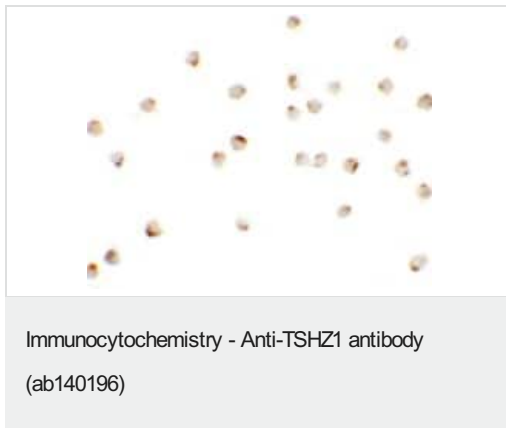
All lanes : Anti-TSHZ1 antibody (ab140196) at 1 µg/ml

Lane 1 : A 20 cell lysate

Lane 2 : A 20 cell lysate with blocking peptide

Lysates/proteins at 15 µg per lane.

Predicted band size: 118 kDa



Immunocytochemical analysis of A20 cells labelling TSHZ1 with ab140196 at 2.5 µg/ml.

Please note: All products are "FOR RESEARCH USE ONLY. NOT FOR USE IN DIAGNOSTIC PROCEDURES"

Our Abpromise to you: Quality guaranteed and expert technical support

- Replacement or refund for products not performing as stated on the datasheet
- Valid for 12 months from date of delivery
- Response to your inquiry within 24 hours
- We provide support in Chinese, English, French, German, Japanese and Spanish
- Extensive multi-media technical resources to help you
- We investigate all quality concerns to ensure our products perform to the highest standards

If the product does not perform as described on this datasheet, we will offer a refund or replacement. For full details of the Abpromise, please visit <https://www.abcam.com/abpromise> or contact our technical team.

Terms and conditions

- Guarantee only valid for products bought direct from Abcam or one of our authorized distributors