

## Product datasheet

# Anti-TTC5 antibody ab36855

[1 References](#) [4 Images](#)

### Overview

---

<b>Product name</b>	Anti-TTC5 antibody
<b>Description</b>	Rabbit polyclonal to TTC5
<b>Host species</b>	Rabbit
<b>Tested applications</b>	<b>Suitable for:</b> WB, IHC-P, ICC/IF
<b>Species reactivity</b>	<b>Reacts with:</b> Mouse, Human
<b>Immunogen</b>	A 14 amino acid peptide from near the carboxy terminus of human TTC5.
<b>Positive control</b>	RAW264.7 cell lysate.
<b>General notes</b>	<p>The Life Science industry has been in the grips of a reproducibility crisis for a number of years. Abcam is leading the way in addressing this with our range of recombinant monoclonal antibodies and knockout edited cell lines for gold-standard validation. Please check that this product meets your needs before purchasing.</p> <p>If you have any questions, special requirements or concerns, please send us an inquiry and/or contact our Support team ahead of purchase. Recommended alternatives for this product can be found below, along with publications, customer reviews and Q&amp;As</p>

### Properties

---

<b>Form</b>	Liquid
<b>Storage instructions</b>	Shipped at 4°C. Store at +4°C.
<b>Storage buffer</b>	pH: 7.2 Preservative: 0.02% Sodium azide Constituent: PBS
<b>Purity</b>	Immunogen affinity purified
<b>Clonality</b>	Polyclonal
<b>Isotype</b>	IgG

### Applications

---

**The Abpromise guarantee** Our **Abpromise guarantee** covers the use of ab36855 in the following tested applications. The application notes include recommended starting dilutions; optimal dilutions/concentrations should be determined by the end user.

Application	Abreviews	Notes
WB		Use a concentration of 0.5 - 2 µg/ml. Detects a band of approximately 49 kDa (predicted molecular weight: 49 kDa).
IHC-P		Use a concentration of 10 µg/ml.
ICC/IF		Use at an assay dependent concentration.

## Target

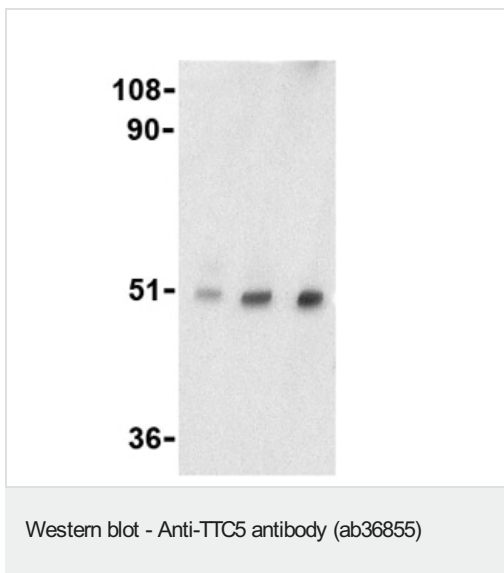
### Relevance

Tetratricopeptide repeat protein 5 (TTC5) is a member of a diverse group of functionally distinct proteins that are characterized by containing one or more tetratricopeptide repeats. Each motif consists of two anti-parallel  $\alpha$ -helices such that tandem arrays of TPR motifs generate a right-handed helical structure with an amphipathic channel that may serve to accommodate the complementary region of a target protein. While the exact function of TTC5 remains unclear, it is thought that the TPR motifs serve to mediate protein-protein interactions such as those seen with protein chaperones HSP70 and HSP90 and some proteins involved in cell stress response signaling pathways such as protein phosphatase 5, suggesting that TTC5 may also function via protein-protein interactions mediated by its TPR motifs.

### Cellular localization

Nucleus. Cytoplasm. Note: Phosphorylation at Ser-203 results in nuclear localization, while unphosphorylated protein localizes to the cytoplasm

## Images



**Lane 1 :** Anti-TTC5 antibody (ab36855) at 0.5 µg/ml

**Lane 2 :** Anti-TTC5 antibody (ab36855) at 1 µg/ml

**Lane 3 :** Anti-TTC5 antibody (ab36855) at 2 µg/ml

**Lane 1 :** RAW 264.7 (Mouse macrophage cell line transformed with Abelson murine leukemia virus) whole cell lysate

**Lanes 2-3 :** RAW264.7 cell lysate

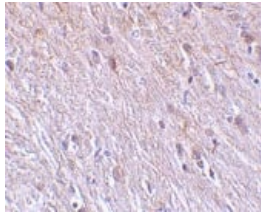
Lysates/proteins at 15 µg/ml per lane.

### Secondary

**All lanes :** anti-rabbit IgG HRP at 1/10000 dilution

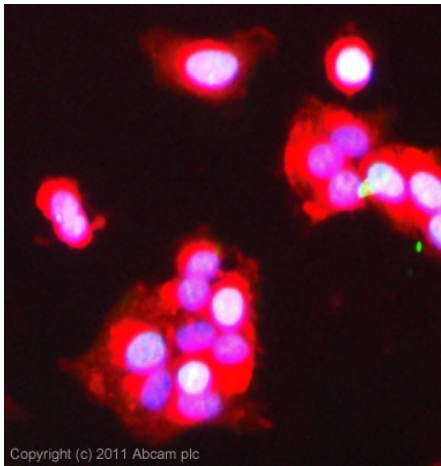
**Predicted band size:** 49 kDa

**Observed band size:** 49 kDa



Immunohistochemistry (Formalin/PFA-fixed paraffin-embedded sections) - Anti-TTC5 antibody (ab36855)

ab36855 at 10µg/ml staining TCC5 in mouse brain tissue by IHC



Immunocytochemistry/ Immunofluorescence - Anti-TTC5 antibody (ab36855)

ICC/IF image of ab36855 stained MCF7 cells. The cells were 100% methanol fixed (5 min) and then incubated in 1%BSA / 10% normal goat serum / 0.3M glycine in 0.1% PBS-Tween for 1h to permeabilise the cells and block non-specific protein-protein interactions. The cells were then incubated with the antibody (ab36855, 5µg/ml) overnight at +4°C. The secondary antibody (green) was [ab96899](#) Dylight 488 goat anti-rabbit IgG (H+L) used at a 1/250 dilution for 1h. Alexa Fluor®594 WGA was used to label plasma membranes (red) at a 1/200 dilution for 1h. DAPI was used to stain the cell nuclei (blue) at a concentration of 1.43µM.

Immunocytochemistry/ Immunofluorescence - Anti-TTC5 antibody (ab36855)

Immunofluorescence of TTC5 in Mouse Brain cells using ab36855 at 20 ug/ml.

**Please note:** All products are "FOR RESEARCH USE ONLY. NOT FOR USE IN DIAGNOSTIC PROCEDURES"

### Our Abpromise to you: Quality guaranteed and expert technical support

- Replacement or refund for products not performing as stated on the datasheet
- Valid for 12 months from date of delivery
- Response to your inquiry within 24 hours
- We provide support in Chinese, English, French, German, Japanese and Spanish
- Extensive multi-media technical resources to help you
- We investigate all quality concerns to ensure our products perform to the highest standards

If the product does not perform as described on this datasheet, we will offer a refund or replacement. For full details of the Abpromise,

please visit <https://www.abcam.com/abpromise> or contact our technical team.

## **Terms and conditions**

---

- Guarantee only valid for products bought direct from Abcam or one of our authorized distributors