

## Product datasheet

# Anti-TTF1 antibody [NX2.1/690] ab220211

[1 References](#) [3 Images](#)

### Overview

---

<b>Product name</b>	Anti-TTF1 antibody [NX2.1/690]
<b>Description</b>	Mouse monoclonal [NX2.1/690] to TTF1
<b>Host species</b>	Mouse
<b>Tested applications</b>	<b>Suitable for:</b> IHC-P
<b>Species reactivity</b>	<b>Reacts with:</b> Rat, Human
<b>Immunogen</b>	Recombinant fragment corresponding to Human TTF1. Database link: <a href="#">P43699</a>
<b>Positive control</b>	IHC-P: Human lung adenocarcinoma, human thyroid and rat lung tissues.
<b>General notes</b>	<p>The Life Science industry has been in the grips of a reproducibility crisis for a number of years. Abcam is leading the way in addressing this with our range of recombinant monoclonal antibodies and knockout edited cell lines for gold-standard validation. Please check that this product meets your needs before purchasing.</p> <p>If you have any questions, special requirements or concerns, please send us an inquiry and/or contact our Support team ahead of purchase. Recommended alternatives for this product can be found below, along with publications, customer reviews and Q&amp;As</p>

### Properties

---

<b>Form</b>	Liquid
<b>Storage instructions</b>	Shipped at 4°C. Store at +4°C short term (1-2 weeks). Upon delivery aliquot. Store at -20°C long term. Avoid freeze / thaw cycle.
<b>Storage buffer</b>	pH: 7.2 Preservative: 0.05% Sodium azide Constituents: 0.05% BSA, PBS
<b>Purity</b>	Protein G purified
<b>Clonality</b>	Monoclonal
<b>Clone number</b>	NX2.1/690
<b>Isotype</b>	IgG1
<b>Light chain type</b>	kappa

## Applications

---

**The Abpromise guarantee** Our **Abpromise guarantee** covers the use of ab220211 in the following tested applications. The application notes include recommended starting dilutions; optimal dilutions/concentrations should be determined by the end user.

Application	Abreviews	Notes
IHC-P		Use a concentration of 0.5 - 1 µg/ml. Perform heat mediated antigen retrieval with citrate buffer pH 6 before commencing with IHC staining protocol.

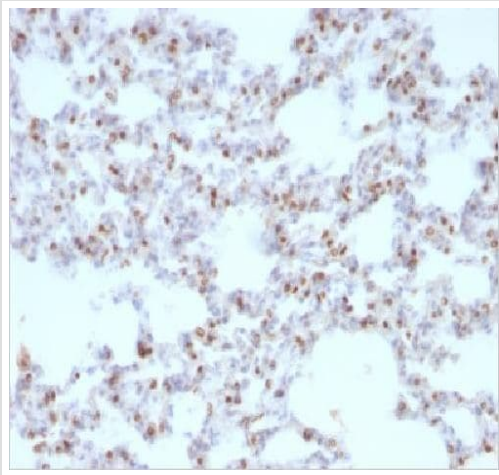
## Target

---

<b>Function</b>	Transcription factor that binds and activates the promoter of thyroid specific genes such as thyroglobulin, thyroperoxidase, and thyrotropin receptor. Crucial in the maintenance of the thyroid differentiation phenotype. May play a role in lung development and surfactant homeostasis.
<b>Tissue specificity</b>	Thyroid and lung.
<b>Involvement in disease</b>	<p>Defects in NKX2-1 are the cause of benign hereditary chorea (BHC) [MIM:118700]; also known as hereditary chorea without dementia. BHC is an autosomal dominant movement disorder. The early onset of symptoms (usually before the age of 5) and the observation that in some BHC families the symptoms tend to decrease in adulthood suggests that the disorder results from a developmental disturbance of the brain. BHC is non-progressive and patients have normal or slightly below normal intelligence. There is considerable inter- and intrafamilial variability, including dysarthria, axial dystonia and gait disturbances.</p> <p>Defects in NKX2-1 are the cause of choreoathetosis, hypothyroidism, and neonatal respiratory distress (CHNRD) [MIM:610978]. This syndrome include neurological, thyroid, and respiratory problems.</p>
<b>Sequence similarities</b>	<p>Belongs to the NK-2 homeobox family.</p> <p>Contains 1 homeobox DNA-binding domain.</p>
<b>Post-translational modifications</b>	Phosphorylated on serine residues.
<b>Cellular localization</b>	Nucleus.

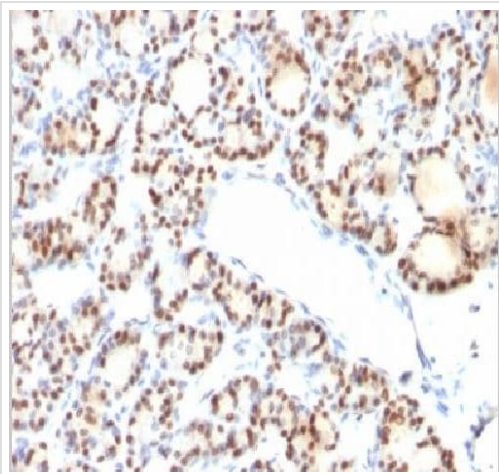
## Images

---



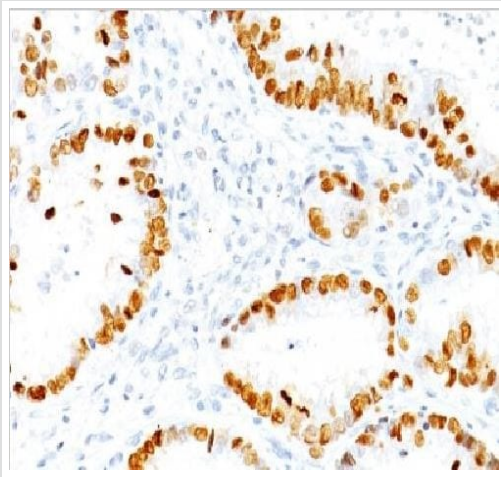
Immunohistochemistry (Formalin/PFA-fixed paraffin-embedded sections) - Anti-TTF1 antibody  
[NX2.1/690] (ab220211)

Immunohistochemical analysis of formalin-fixed and paraffin-embedded rat lung tissue labeling TTF1 with ab220211 at 1  $\mu\text{g/mL}$ .



Immunohistochemistry (Formalin/PFA-fixed paraffin-embedded sections) - Anti-TTF1 antibody  
[NX2.1/690] (ab220211)

Immunohistochemical analysis of formalin-fixed and paraffin-embedded human thyroid tissue labeling TTF1 with ab220211 at 1  $\mu\text{g/mL}$ .



Immunohistochemical analysis of formalin-fixed and paraffin-embedded human lung adenocarcinoma tissue labeling TTF1 with ab220211 at 1 µg/mL.

Immunohistochemistry (Formalin/PFA-fixed paraffin-embedded sections) - Anti-TTF1 antibody  
[NX2.1/690] (ab220211)

**Please note:** All products are "FOR RESEARCH USE ONLY. NOT FOR USE IN DIAGNOSTIC PROCEDURES"

### Our Abpromise to you: Quality guaranteed and expert technical support

---

- Replacement or refund for products not performing as stated on the datasheet
- Valid for 12 months from date of delivery
- Response to your inquiry within 24 hours
- We provide support in Chinese, English, French, German, Japanese and Spanish
- Extensive multi-media technical resources to help you
- We investigate all quality concerns to ensure our products perform to the highest standards

If the product does not perform as described on this datasheet, we will offer a refund or replacement. For full details of the Abpromise, please visit <https://www.abcam.com/abpromise> or contact our technical team.

### Terms and conditions

---

- Guarantee only valid for products bought direct from Abcam or one of our authorized distributors