


## Product datasheet

### Anti-TTF2 antibody [EPR12756] ab181116

Recombinant RabMAb

★★★★☆ [2 Abreviews](#) [6 Images](#)

#### Overview

<b>Product name</b>	Anti-TTF2 antibody [EPR12756]
<b>Description</b>	Rabbit monoclonal [EPR12756] to TTF2
<b>Host species</b>	Rabbit
<b>Tested applications</b>	<b>Suitable for:</b> Flow Cyt (Intra), ICC/IF, IHC-P, WB
<b>Species reactivity</b>	<b>Reacts with:</b> Human <b>Predicted to work with:</b> Mouse, Rat 
<b>Immunogen</b>	Synthetic peptide. This information is proprietary to Abcam and/or its suppliers.
<b>Positive control</b>	Daudi and HeLa cell line lysates; Jurkat cells; Human adenocarcinoma of endometrium tissue; Human pancreas tissue.
<b>General notes</b>	This product is a recombinant monoclonal antibody, which offers several advantages including: <ul style="list-style-type: none"> <li>- High batch-to-batch consistency and reproducibility</li> <li>- Improved sensitivity and specificity</li> <li>- Long-term security of supply</li> <li>- Animal-free production</li> </ul> For more information <a href="#">see here</a> . Our RabMAb <sup>®</sup> technology is a patented hybridoma-based technology for making rabbit monoclonal antibodies. For details on our patents, please refer to <a href="#">RabMAb<sup>®</sup> patents</a> .

#### Properties

<b>Form</b>	Liquid
<b>Storage instructions</b>	Shipped at 4°C. Store at +4°C short term (1-2 weeks). Upon delivery aliquot. Store at -20°C long term. Avoid freeze / thaw cycle.
<b>Storage buffer</b>	Preservative: 0.01% Sodium azide Constituents: 59% PBS, 40% Glycerol (glycerin, glycerine), 0.05% BSA
<b>Purity</b>	Protein A purified
<b>Clonality</b>	Monoclonal
<b>Clone number</b>	EPR12756
<b>Isotype</b>	IgG

## Applications

---

**The Abpromise guarantee** Our **Abpromise guarantee** covers the use of ab181116 in the following tested applications.

The application notes include recommended starting dilutions; optimal dilutions/concentrations should be determined by the end user.

Application	Abreviews	Notes
Flow Cyt (Intra)		1/60. <b>ab172730</b> - Rabbit monoclonal IgG, is suitable for use as an isotype control with this antibody.
ICC/IF		1/50 - 1/100.
IHC-P		1/100 - 1/250. Perform heat mediated antigen retrieval with Tris/EDTA buffer pH 9.0 before commencing with IHC staining protocol.
WB		1/1000 - 1/10000. Predicted molecular weight: 130 kDa.

## Target

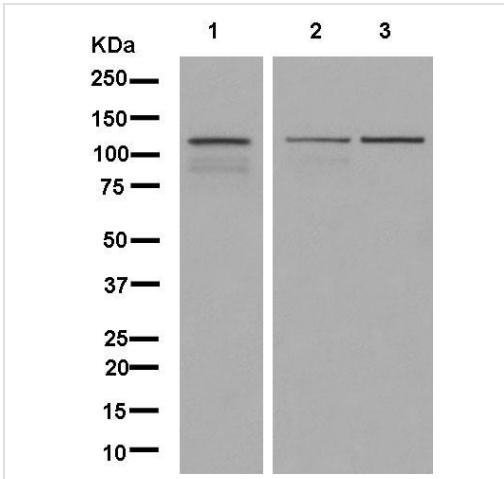
---

<b>Function</b>	DsDNA-dependent ATPase which acts as a transcription termination factor by coupling ATP hydrolysis with removal of RNA polymerase II from the DNA template. May contribute to mitotic transcription repression. May also be involved in pre-mRNA splicing.
<b>Sequence similarities</b>	Belongs to the SNF2/RAD54 helicase family. Contains 1 helicase ATP-binding domain. Contains 1 helicase C-terminal domain.
<b>Cellular localization</b>	Cytoplasm. Nucleus. Cytoplasmic during interphase. Relocates to the nucleus as cells enter mitosis.

---

## Images

---



Western blot - Anti-TTF2 antibody [EPR12756] (ab181116)

**All lanes :** Anti-TTF2 antibody [EPR12756] (ab181116) at 1/5000 dilution

**Lane 1 :** Daudi cell line lysate

**Lane 2 :** HeLa cell line lysate

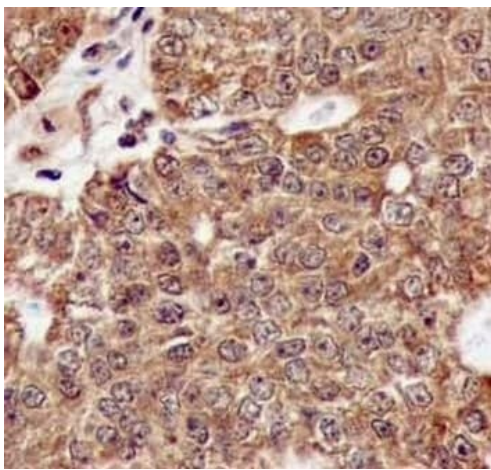
**Lane 3 :** Jurkat cell line lysate

Lysates/proteins at 20 µg per lane.

#### Secondary

**All lanes :** Goat Anti-Rabbit IgG, (H+L), Peroxidase conjugated antibody at 1/1000 dilution

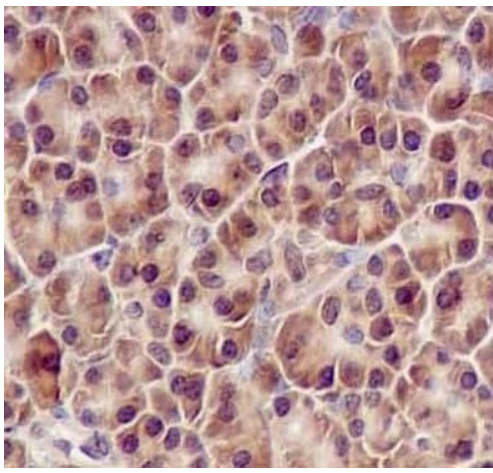
**Predicted band size:** 130 kDa



Immunohistochemistry (Formalin/PFA-fixed paraffin-embedded sections) - Anti-TTF2 antibody [EPR12756] (ab181116)

Immunohistochemical analysis of paraffin embedded Human adenocarcinoma of endometrium tissue labeling TTF2 with ab181116 at 1/250. Prediluted (ready to use) HRP Polymer for Rabbit IgG was used as a secondary antibody. Counter stain: Hematoxylin

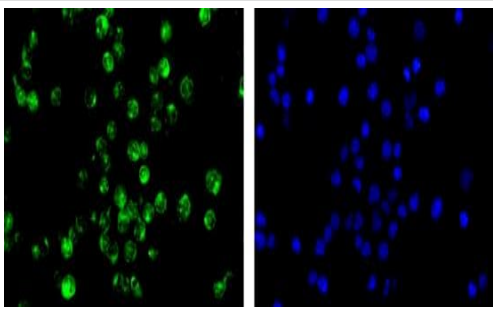
Perform heat mediated antigen retrieval with EDTA buffer pH 9 before commencing with IHC staining protocol.



Immunohistochemistry (Formalin/PFA-fixed paraffin-embedded sections) - Anti-TTF2 antibody [EPR12756] (ab181116)

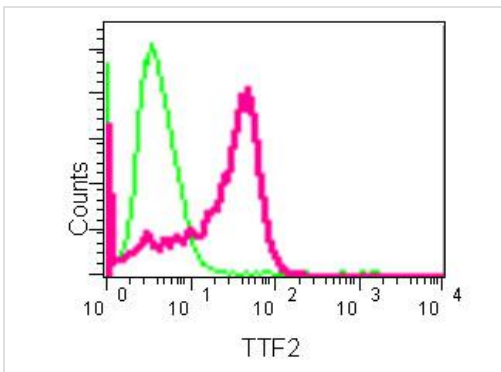
Immunohistochemical analysis of paraffin embedded Human pancreas tissue labeling TTF2 with ab181116 at 1/250 dilution. Prediluted (ready to use) HRP Polymer for Rabbit IgG was used as a secondary antibody. Counter stain: Hematoxylin

Perform heat mediated antigen retrieval with EDTA buffer pH 9 before commencing with IHC staining protocol.



Immunocytochemistry/ Immunofluorescence - Anti-TTF2 antibody [EPR12756] (ab181116)





Immunofluorescent analysis of acetone-fixed Jurkat cells labeling TTF2 with ab181116 at 1/100 (green) dilution. Goat anti rabbit IgG (Alexa Fluor® 488) was used for secondary antibody staining at a dilution of 1/200. Counter stain: Dapi (blue)



Flow Cytometry (Intracellular) - Anti-TTF2 antibody [EPR12756] (ab181116)

Intracellular flow cytometric analysis of 2% paraformaldehyde-fixed Jurkat cells labeling TTF2 with ab181116 at 1/60 dilution, followed by Goat anti rabbit IgG (FITC) at 1/150 dilution (pink). Rabbit monoclonal IgG was used as Isotype control (green).

Why choose a recombinant antibody?

 <b>Research with confidence</b> Consistent and reproducible results	 <b>Long-term and scalable supply</b> Recombinant technology
 <b>Success from the first experiment</b> Confirmed specificity	 <b>Ethical standards compliant</b> Animal-free production

Anti-TTF2 antibody [EPR12756] (ab181116)

**Please note:** All products are "FOR RESEARCH USE ONLY. NOT FOR USE IN DIAGNOSTIC PROCEDURES"

### Our Abpromise to you: Quality guaranteed and expert technical support

---

- Replacement or refund for products not performing as stated on the datasheet
- Valid for 12 months from date of delivery
- Response to your inquiry within 24 hours
- We provide support in Chinese, English, French, German, Japanese and Spanish
- Extensive multi-media technical resources to help you
- We investigate all quality concerns to ensure our products perform to the highest standards

If the product does not perform as described on this datasheet, we will offer a refund or replacement. For full details of the Abpromise, please visit <https://www.abcam.com/abpromise> or contact our technical team.

### Terms and conditions

---

- Guarantee only valid for products bought direct from Abcam or one of our authorized distributors