




Product datasheet

Anti-TTK/Mps1 antibody [OTI13E9] ab236525

1 Image

Overview

Product name	Anti-TTK/Mps1 antibody [OTI13E9]
Description	Mouse monoclonal [OTI13E9] to TTK/Mps1
Host species	Mouse
Tested applications	Suitable for: WB
Species reactivity	Reacts with: Human Predicted to work with: Cynomolgus monkey 
Immunogen	Recombinant fragment corresponding to Human TTK/Mps1 aa 150-500. (NP_003309) produced in E.coli. Database link: P33981  Run BLAST with  Run BLAST with
Positive control	WB: K562 and Raji cell lysate.
General notes	<p>The Life Science industry has been in the grips of a reproducibility crisis for a number of years. Abcam is leading the way in addressing this with our range of recombinant monoclonal antibodies and knockout edited cell lines for gold-standard validation. Please check that this product meets your needs before purchasing.</p> <p>If you have any questions, special requirements or concerns, please send us an inquiry and/or contact our Support team ahead of purchase. Recommended alternatives for this product can be found below, along with publications, customer reviews and Q&As</p>

Properties

Form	Liquid
Storage instructions	Shipped at 4°C. Store at +4°C short term (1-2 weeks). Upon delivery aliquot. Store at -20°C long term. Avoid freeze / thaw cycle.
Storage buffer	pH: 7.30 Preservative: 0.02% Sodium azide Constituents: PBS, 1% BSA, 50% Glycerol
Purity	Affinity purified
Purification notes	Purified from cell culture supernatant.
Clonality	Monoclonal
Clone number	OTI13E9

Isotype

IgG2b

Applications

The Abpromise guarantee

Our **Abpromise guarantee** covers the use of ab236525 in the following tested applications.

The application notes include recommended starting dilutions; optimal dilutions/concentrations should be determined by the end user.

Application	Abreviews	Notes
WB		1/500. Predicted molecular weight: 97 kDa.

Target

Function

Phosphorylates proteins on serine, threonine, and tyrosine. Probably associated with cell proliferation. Essential for chromosome alignment by enhancing AURKB activity (via direct CDCA8 phosphorylation) at the centromere, and for the mitotic checkpoint.

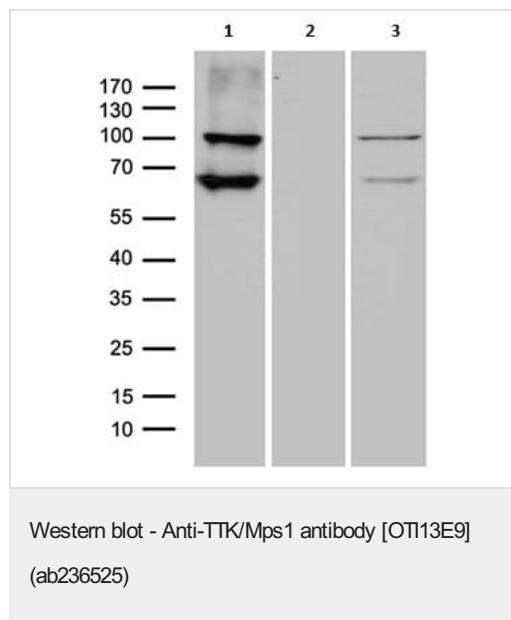
Tissue specificity

Present in rapidly proliferating cell lines.

Sequence similarities

Belongs to the protein kinase superfamily. Ser/Thr protein kinase family.
Contains 1 protein kinase domain.

Images



All lanes : Anti-TTK/Mps1 antibody [OT113E9] (ab236525) at 1/500 dilution

Lane 1 : K562 (human chronic myelogenous leukemia cell line from bone marrow) cell lysate

Lane 2 : Ramos (human Burkitt's lymphoma cell line) cell lysate

Lane 3 : Raji (human Burkitt's lymphoma cell line) cell lysate

Lysates/proteins at 35 µg per lane.

Predicted band size: 97 kDa

Please note: All products are "FOR RESEARCH USE ONLY. NOT FOR USE IN DIAGNOSTIC PROCEDURES"

Our Abpromise to you: Quality guaranteed and expert technical support

- Replacement or refund for products not performing as stated on the datasheet

- Valid for 12 months from date of delivery
- Response to your inquiry within 24 hours
- We provide support in Chinese, English, French, German, Japanese and Spanish
- Extensive multi-media technical resources to help you
- We investigate all quality concerns to ensure our products perform to the highest standards

If the product does not perform as described on this datasheet, we will offer a refund or replacement. For full details of the Abpromise, please visit <https://www.abcam.com/abpromise> or contact our technical team.

Terms and conditions

- Guarantee only valid for products bought direct from Abcam or one of our authorized distributors