


## Product datasheet

### Anti-TUBB2A + TUBB2B antibody [EPR11843] ab170931

Recombinant RabMAb

[4 References](#) [5 Images](#)

#### Overview

<b>Product name</b>	Anti-TUBB2A + TUBB2B antibody [EPR11843]
<b>Description</b>	Rabbit monoclonal [EPR11843] to TUBB2A + TUBB2B
<b>Host species</b>	Rabbit
<b>Tested applications</b>	<b>Suitable for:</b> Flow Cyt (Intra), WB, IHC-P, IP <b>Unsuitable for:</b> ICC/IF
<b>Species reactivity</b>	<b>Reacts with:</b> Human <b>Predicted to work with:</b> Mouse, Rat 
<b>Immunogen</b>	Recombinant fragment within Human TUBB2A. The exact sequence is proprietary. Database link: <a href="#">Q13885</a>
<b>Positive control</b>	293T, HepG2, Jurkat and HeLa whole cell lysate ( <a href="#">ab150035</a> ); Human brain tissue; Jurkat cells.
<b>General notes</b>	<p>This product is a recombinant monoclonal antibody, which offers several advantages including:</p> <ul style="list-style-type: none"> <li>- High batch-to-batch consistency and reproducibility</li> <li>- Improved sensitivity and specificity</li> <li>- Long-term security of supply</li> <li>- Animal-free production</li> </ul> <p>For more information <a href="#">see here</a>.</p> <p>Our RabMAb<sup>®</sup> technology is a patented hybridoma-based technology for making rabbit monoclonal antibodies. For details on our patents, please refer to <a href="#">RabMAb<sup>®</sup> patents</a>.</p>

#### Properties

<b>Form</b>	Liquid
<b>Storage instructions</b>	Shipped at 4°C. Store at +4°C short term (1-2 weeks). Upon delivery aliquot. Store at -20°C long term. Avoid freeze / thaw cycle.
<b>Storage buffer</b>	pH: 7.2 Preservative: 0.01% Sodium azide Constituents: 9% PBS, 40% Glycerol (glycerin, glycerine), 0.05% BSA, 50% Tissue culture supernatant
<b>Purity</b>	Tissue culture supernatant
<b>Clonality</b>	Monoclonal

Clone number EPR11843

Isotype IgG

## Applications

**The Abpromise guarantee** Our **Abpromise guarantee** covers the use of ab170931 in the following tested applications.

The application notes include recommended starting dilutions; optimal dilutions/concentrations should be determined by the end user.

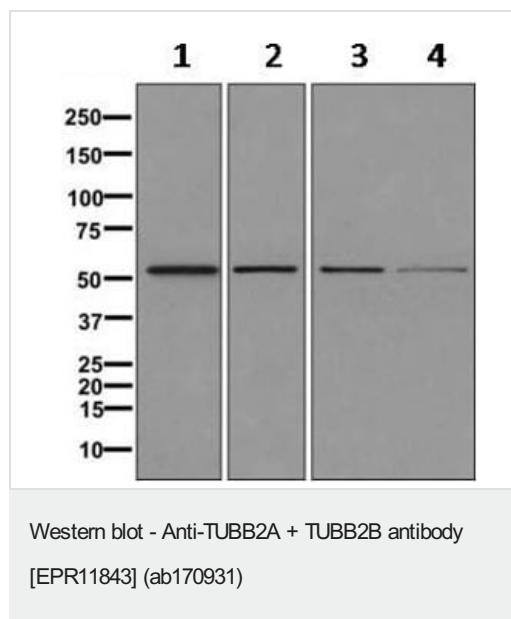
Application	Abreviews	Notes
Flow Cyt (Intra)		1/10 - 1/100. <b>ab172730</b> - Rabbit monoclonal IgG, is suitable for use as an isotype control with this antibody.
WB		1/10000 - 1/50000. Predicted molecular weight: 50 kDa.
IHC-P		1/100 - 1/250. Perform heat mediated antigen retrieval with citrate buffer pH 6 before commencing with IHC staining protocol.
IP		1/10 - 1/100.

**Application notes** Is unsuitable for ICC/IF.

## Target

**Cellular localization** TUBB2A: Cytoplasm > cytoskeleton. TUBB2B: Cytoplasm, cytoskeleton.

## Images



**All lanes :** Anti-TUBB2A + TUBB2B antibody [EPR11843]  
(ab170931) at 1/10000 dilution

**Lane 1 :** 293T cell lysate

**Lane 2 :** HepG2 cell lysate

**Lane 3 :** Jurkat cell lysate

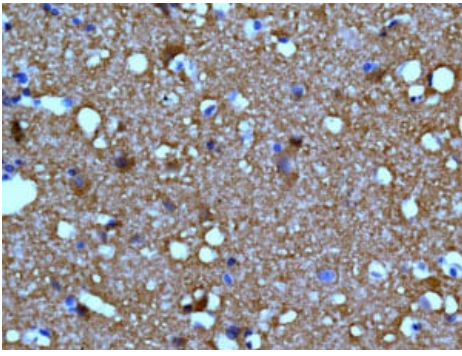
**Lane 4 :** HeLa cell lysate

Lysates/proteins at 10 µg per lane.

### Secondary

**All lanes :** Goat anti-rabbit HRP conjugated at 1/2000 dilution

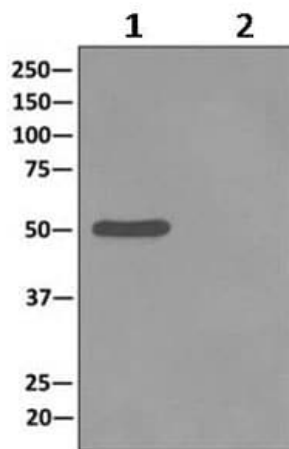
**Predicted band size:** 50 kDa



Immunohistochemistry (Formalin/PFA-fixed paraffin-embedded sections) - Anti-TUBB2A + TUBB2B antibody [EPR11843] (ab170931)

Immunohistochemical analysis of paraffin-embedded Human brain tissue labeling TUBB2A with ab170931 at 1/100 dilution.

Perform heat mediated antigen retrieval with citrate buffer pH 6 before commencing with IHC staining protocol.



Immunoprecipitation - Anti-TUBB2A + TUBB2B antibody [EPR11843] (ab170931)

Western blot analysis on immunoprecipitation pellet from 293T cell lysate (Lane 1) or 1X PBS (negative control) (Lane 2) using ab170931 and HRP-conjugated anti-rabbit IgG preferentially detecting the non-reduced form of rabbit IgG.

Lane 1 Primary: ab170931, 1/10000 dilution

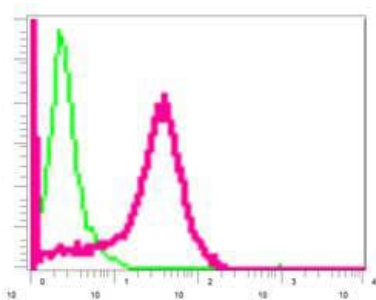
Sample: Immunoprecipitation pellet from 293T cell lysate

Secondary: HRP-conjugated anti-rabbit IgG

Lane 2 Primary: ab170931, 1/10000 dilution

Sample: 1X PBS (negative control)

Secondary: HRP-conjugated anti-rabbit IgG



Flow Cytometry (Intracellular) - Anti-TUBB2A + TUBB2B antibody [EPR11843] (ab170931)

Intracellular flow cytometric analysis of permeabilized Jurkat cells labeling TUBB2A with ab170931 at 1/10 dilution (red) compared to a rabbit IgG negative control (green).

### Why choose a recombinant antibody?



**Research with confidence**  
Consistent and reproducible results



**Long-term and scalable supply**  
Recombinant technology



**Success from the first experiment**  
Confirmed specificity



**Ethical standards compliant**  
Animal-free production

Anti-TUBB2A + TUBB2B antibody [EPR11843]  
(ab170931)

**Please note:** All products are "FOR RESEARCH USE ONLY. NOT FOR USE IN DIAGNOSTIC PROCEDURES"

### Our Abpromise to you: Quality guaranteed and expert technical support

---

- Replacement or refund for products not performing as stated on the datasheet
- Valid for 12 months from date of delivery
- Response to your inquiry within 24 hours
- We provide support in Chinese, English, French, German, Japanese and Spanish
- Extensive multi-media technical resources to help you
- We investigate all quality concerns to ensure our products perform to the highest standards

If the product does not perform as described on this datasheet, we will offer a refund or replacement. For full details of the Abpromise, please visit <https://www.abcam.com/abpromise> or contact our technical team.

### Terms and conditions

---

- Guarantee only valid for products bought direct from Abcam or one of our authorized distributors