


Product datasheet

Anti-TUBG1 antibody [EPR8449] ab129021

Recombinant RabMAb

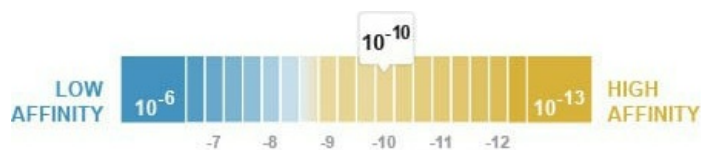
3 Images

Overview

Product name	Anti-TUBG1 antibody [EPR8449]
Description	Rabbit monoclonal [EPR8449] to TUBG1
Host species	Rabbit
Tested applications	Suitable for: WB Unsuitable for: Flow Cyt, ICC/IF, IHC-P or IP
Species reactivity	Reacts with: Human Predicted to work with: Mouse, Rat 
Immunogen	Synthetic peptide within Human TUBG1 aa 400-500. The exact sequence is proprietary.
Positive control	Jurkat, HeLa, A431, and K562 cell lysates.
General notes	This product is a recombinant monoclonal antibody, which offers several advantages including: <ul style="list-style-type: none"> - High batch-to-batch consistency and reproducibility - Improved sensitivity and specificity - Long-term security of supply - Animal-free production For more information see here . Our RabMAb [®] technology is a patented hybridoma-based technology for making rabbit monoclonal antibodies. For details on our patents, please refer to RabMAb[®] patents .

Properties

Form	Liquid
Storage instructions	Shipped at 4°C. Store at -20°C. Stable for 12 months at -20°C.
Dissociation constant (K_D)	K _D = 1.24 x 10 ⁻¹⁰ M



[Learn more about K_D](#)

Storage buffer	pH: 7.20 Preservative: 0.01% Sodium azide
-----------------------	--

Constituents: 9% PBS, 40% Glycerol (glycerin, glycerine), 0.05% BSA, 50% Tissue culture supernatant

Purity Protein A purified
Clonality Monoclonal
Clone number EPR8449
Isotype IgG

Applications

The Abpromise guarantee Our **Abpromise guarantee** covers the use of ab129021 in the following tested applications. The application notes include recommended starting dilutions; optimal dilutions/concentrations should be determined by the end user.

Application	Abreviews	Notes
WB		1/1000 - 1/10000. Predicted molecular weight: 51 kDa.

Application notes Is unsuitable for Flow Cyt, ICC/IF, IHC-P or IP.

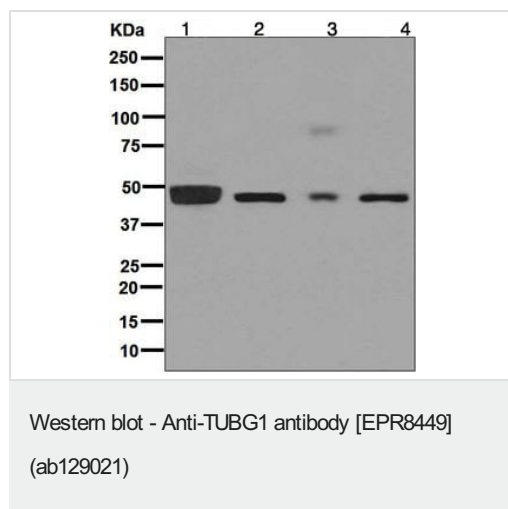
Target

Function Tubulin is the major constituent of microtubules. Gamma tubulin is found at microtubule organizing centers (MTOC) such as the spindle poles or the centrosome, suggesting that it is involved in the minus-end nucleation of microtubule assembly.

Sequence similarities Belongs to the tubulin family.

Cellular localization Cytoplasm > cytoskeleton > centrosome.

Images



All lanes : Anti-TUBG1 antibody [EPR8449] (ab129021) at 1/1000 dilution

Lane 1 : Jurkat cell lysates

Lane 2 : HeLa cell lysates

Lane 3 : A431 cell lysates

Lane 4 : K562 cell lysates

Lysates/proteins at 10 µg per lane.

Secondary

All lanes : HRP-conjugated goat anti-rabbit at 1/2000 dilution

Predicted band size: 51 kDa

OI-RD Scanning - Anti-TUBG1 antibody [EPR8449]
(ab129021)

Equilibrium disassociation constant (K_D)

Learn more about K_D

[Click here to learn more about \$K_D\$](#)

Why choose a
recombinant antibody?



Research with confidence
Consistent and reproducible results



Long-term and scalable supply
Recombinant technology



Success from the first experiment
Confirmed specificity



Ethical standards compliant
Animal-free production

Anti-TUBG1 antibody [EPR8449] (ab129021)

Please note: All products are "FOR RESEARCH USE ONLY. NOT FOR USE IN DIAGNOSTIC PROCEDURES"

Our Abpromise to you: Quality guaranteed and expert technical support

- Replacement or refund for products not performing as stated on the datasheet
- Valid for 12 months from date of delivery
- Response to your inquiry within 24 hours
- We provide support in Chinese, English, French, German, Japanese and Spanish
- Extensive multi-media technical resources to help you
- We investigate all quality concerns to ensure our products perform to the highest standards

If the product does not perform as described on this datasheet, we will offer a refund or replacement. For full details of the Abpromise, please visit <https://www.abcam.com/abpromise> or contact our technical team.

Terms and conditions

- Guarantee only valid for products bought direct from Abcam or one of our authorized distributors