


Product datasheet

Anti-TUBGCP5 antibody ab168325

1 Image

Overview

Product name	Anti-TUBGCP5 antibody
Description	Mouse polyclonal to TUBGCP5
Host species	Mouse
Tested applications	Suitable for: WB
Species reactivity	Reacts with: Human Predicted to work with: Mouse 
Immunogen	Recombinant full length corresponding to amino acids 1-1024 of Human TUBGCP5 (NP_443135). Run BLAST with Expasy Run BLAST with NCBI
Positive control	TUBGCP5 transfected 293T cells
General notes	<p>The Life Science industry has been in the grips of a reproducibility crisis for a number of years. Abcam is leading the way in addressing this with our range of recombinant monoclonal antibodies and knockout edited cell lines for gold-standard validation. Please check that this product meets your needs before purchasing.</p> <p>If you have any questions, special requirements or concerns, please send us an inquiry and/or contact our Support team ahead of purchase. Recommended alternatives for this product can be found below, along with publications, customer reviews and Q&As</p>

Properties

Form	Liquid
Storage instructions	Shipped at 4°C. Store at +4°C short term (1-2 weeks). Upon delivery aliquot. Store at -20°C long term.
Purity	Whole antiserum
Clonality	Polyclonal
Isotype	IgG

Applications

The Abpromise guarantee Our **Abpromise guarantee** covers the use of ab168325 in the following tested applications.

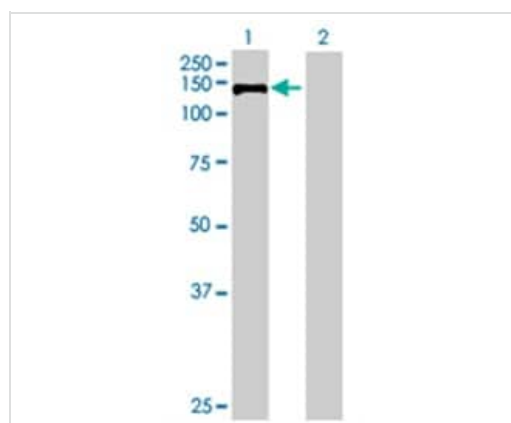
The application notes include recommended starting dilutions; optimal dilutions/concentrations should be determined by the end user.

Application	Abreviews	Notes
WB		1/500 - 1/1000. Predicted molecular weight: 118 kDa.

Target

Function	Gamma-tubulin complex is necessary for microtubule nucleation at the centrosome.
Tissue specificity	Widely expressed, with highest levels in heart and skeletal muscle and moderate levels in brain.
Sequence similarities	Belongs to the GCP family.
Cellular localization	Cytoplasm > cytoskeleton > centrosome.

Images



Western blot - Anti-TUBGCP5 antibody (ab168325)

All lanes : Anti-TUBGCP5 antibody (ab168325) at 1/500 dilution

Lane 1 : TUBGCP5 transfected 293T cells

Lane 2 : Non-transfected 293T cells

Lysates/proteins at 15 µl per lane.

Secondary

All lanes : Goat Anti-Mouse IgG at 1/2500 dilution

Predicted band size: 118 kDa

Please note: All products are "FOR RESEARCH USE ONLY. NOT FOR USE IN DIAGNOSTIC PROCEDURES"

Our Abpromise to you: Quality guaranteed and expert technical support

- Replacement or refund for products not performing as stated on the datasheet
- Valid for 12 months from date of delivery
- Response to your inquiry within 24 hours
- We provide support in Chinese, English, French, German, Japanese and Spanish
- Extensive multi-media technical resources to help you
- We investigate all quality concerns to ensure our products perform to the highest standards

If the product does not perform as described on this datasheet, we will offer a refund or replacement. For full details of the Abpromise, please visit <https://www.abcam.com/abpromise> or contact our technical team.

Terms and conditions

- Guarantee only valid for products bought direct from Abcam or one of our authorized distributors