

Product datasheet

Anti-Tubulin antibody [EPR13796] - Loading Control ab210797

Recombinant RabMAb

[1 Abreviews](#) [28 References](#) [3 Images](#)

Overview

Product name	Anti-Tubulin antibody [EPR13796] - Loading Control
Description	Rabbit monoclonal [EPR13796] to Tubulin - Loading Control
Host species	Rabbit
Specificity	ab210797 recognizes Tubulin alpha-1 and alpha-3 chains.
Tested applications	Suitable for: WB
Species reactivity	Reacts with: Saccharomyces cerevisiae
Immunogen	Synthetic peptide. This information is proprietary to Abcam and/or its suppliers.
Positive control	WB: Saccharomyces cerevisiae whole cell lysates; full length recombinant protein Saccharomyces cerevisiae tubulin alpha-3 chain.
General notes	<p>This product is a recombinant monoclonal antibody, which offers several advantages including:</p> <ul style="list-style-type: none">- High batch-to-batch consistency and reproducibility- Improved sensitivity and specificity- Long-term security of supply- Animal-free production <p>For more information see here.</p> <p>Our RabMAb[®] technology is a patented hybridoma-based technology for making rabbit monoclonal antibodies. For details on our patents, please refer to RabMAb[®] patents.</p>

Properties

Form	Liquid
Storage instructions	Shipped at 4°C. Store at +4°C short term (1-2 weeks). Upon delivery aliquot. Store at -20°C long term. Avoid freeze / thaw cycle.
Storage buffer	pH: 7.2 Preservative: 0.01% Sodium azide Constituents: 59% PBS, 40% Glycerol (glycerin, glycerine), 0.05% BSA
Purity	Protein A purified
Clonality	Monoclonal

Clone number EPR13796
Isotype IgG

Applications

The Abpromise guarantee Our **Abpromise guarantee** covers the use of ab210797 in the following tested applications. The application notes include recommended starting dilutions; optimal dilutions/concentrations should be determined by the end user.

Application	Abreviews	Notes
WB		1/1000. Detects a band of approximately 50 kDa (predicted molecular weight: 50 kDa).

Target

Function Tubulin is the major constituent of microtubules. It binds two moles of GTP, one at an exchangeable site on the beta chain and one at a non-exchangeable site on the alpha-chain.

Sequence similarities Belongs to the tubulin family.

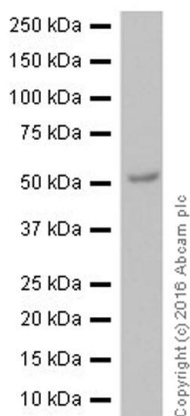
Post-translational modifications Undergoes a tyrosination/detyrosination cycle, the cyclic removal and re-addition of a C-terminal tyrosine residue by the enzymes tubulin tyrosine carboxypeptidase (TTCP) and tubulin tyrosine ligase (TTL), respectively.

Some glutamate residues at the C-terminus are polyglutamylated. This modification occurs exclusively on glutamate residues and results in polyglutamate chains on the gamma-carboxyl group. Also monoglycylated but not polyglycylated due to the absence of functional TTL10 in human. Monoglycylation is mainly limited to tubulin incorporated into axonemes (cilia and flagella) whereas glutamylation is prevalent in neuronal cells, centrioles, axonemes, and the mitotic spindle. Both modifications can coexist on the same protein on adjacent residues, and lowering glycylation levels increases polyglutamylated, and reciprocally. The precise function of such modifications is still unclear but they regulate the assembly and dynamics of axonemal microtubules.

Acetylation of alpha-tubulins at Lys-40 stabilizes microtubules and affects affinity and processivity of microtubule motors. This modification has a role in multiple cellular functions, ranging from cell motility, cell cycle progression or cell differentiation to intracellular trafficking and signaling.

Cellular localization Cytoplasm > cytoskeleton.

Images



Western blot - Anti-Tubulin antibody [EPR13796] - Loading Control (ab210797)

Anti-Tubulin antibody [EPR13796] - Loading Control (ab210797) at 1/1000 dilution + *Saccharomyces cerevisiae* whole cell lysates at 10 µg

Secondary

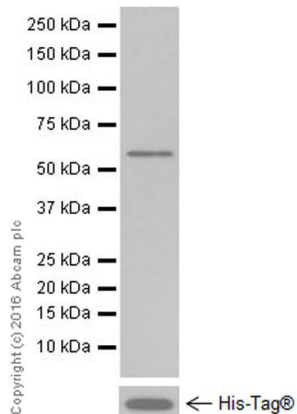
Goat Anti-Rabbit IgG H&L (HRP) ([ab97051](#)) at 1/100000 dilution

Predicted band size: 50 kDa

Observed band size: 50 kDa

Exposure time: 3 minutes

Blocking/Dilution buffer: 5% NFDm/TBST.



Western blot - Anti-Tubulin antibody [EPR13796] - Loading Control (ab210797)

Anti-Tubulin antibody [EPR13796] - Loading Control (ab210797) at 1/1000 dilution + Full length recombinant protein *Saccharomyces cerevisiae* tubulin alpha-3 chain at 0.01 µg

Secondary

Goat Anti-Rabbit IgG H&L (HRP) ([ab97051](#)) at 1/100000 dilution

Predicted band size: 50 kDa

Observed band size: 50 kDa

Exposure time: 3 minutes

Blocking/Dilution buffer: 5% NFDm/TBST.

Full length recombinant protein *Saccharomyces cerevisiae* tubulin alpha-3 chain contains aa1-445 with a His-Tag® was made in house.

Why choose a recombinant antibody?



Research with confidence
Consistent and reproducible results



Long-term and scalable supply
Recombinant technology



Success from the first experiment
Confirmed specificity



Ethical standards compliant
Animal-free production

Anti-Tubulin antibody [EPR13796] - Loading Control
(ab210797)

Please note: All products are "FOR RESEARCH USE ONLY. NOT FOR USE IN DIAGNOSTIC PROCEDURES"

Our Abpromise to you: Quality guaranteed and expert technical support

- Replacement or refund for products not performing as stated on the datasheet
- Valid for 12 months from date of delivery
- Response to your inquiry within 24 hours
- We provide support in Chinese, English, French, German, Japanese and Spanish
- Extensive multi-media technical resources to help you
- We investigate all quality concerns to ensure our products perform to the highest standards

If the product does not perform as described on this datasheet, we will offer a refund or replacement. For full details of the Abpromise, please visit <https://www.abcam.com/abpromise> or contact our technical team.

Terms and conditions

- Guarantee only valid for products bought direct from Abcam or one of our authorized distributors