


Product datasheet

Anti-TUG antibody [EPR8616] ab131217

KO VALIDATED Recombinant RabMAb

3 Images

Overview

Product name	Anti-TUG antibody [EPR8616]
Description	Rabbit monoclonal [EPR8616] to TUG
Host species	Rabbit
Tested applications	Suitable for: WB Unsuitable for: Flow Cyt, ICC/IF or IHC-P
Species reactivity	Reacts with: Mouse, Human Predicted to work with: Rat 
Immunogen	Synthetic peptide. This information is proprietary to Abcam and/or its suppliers.
Positive control	K562, 293T, and SW480 cell lysates.
General notes	<p>This product is a recombinant monoclonal antibody, which offers several advantages including:</p> <ul style="list-style-type: none"> - High batch-to-batch consistency and reproducibility - Improved sensitivity and specificity - Long-term security of supply - Animal-free production <p>For more information see here.</p> <p>Our RabMAb[®] technology is a patented hybridoma-based technology for making rabbit monoclonal antibodies. For details on our patents, please refer to RabMAb[®] patents.</p>

Properties

Form	Liquid
Storage instructions	Shipped at 4°C. Store at -20°C. Stable for 12 months at -20°C.
Storage buffer	pH: 7.20 Preservative: 0.01% Sodium azide Constituents: 9% PBS, 40% Glycerol (glycerin, glycerine), 0.05% BSA, 50% Tissue culture supernatant
Purity	Protein A purified
Clonality	Monoclonal
Clone number	EPR8616

Isotype IgG

Applications

The Abpromise guarantee Our **Abpromise guarantee** covers the use of ab131217 in the following tested applications. The application notes include recommended starting dilutions; optimal dilutions/concentrations should be determined by the end user.

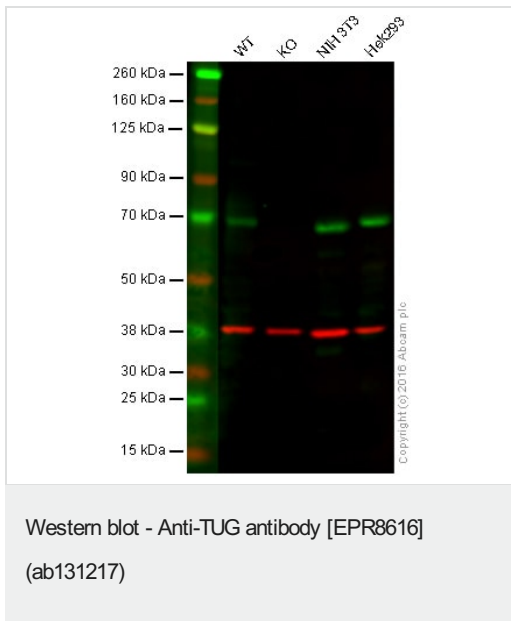
Application	Abreviews	Notes
WB		1/10000 - 1/50000. Predicted molecular weight: 60 kDa.

Application notes Is unsuitable for Flow Cyt, ICC/IF or IHC-P.

Target

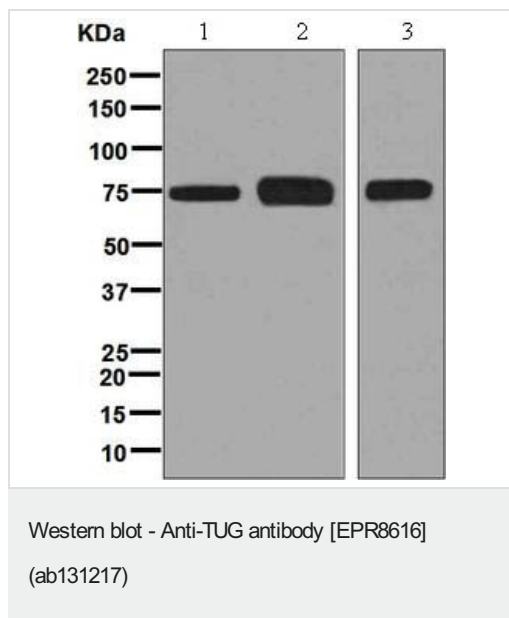
Function	Tethering protein that sequesters GLUT4-containing vesicles in the cytoplasm in the absence of insulin. Modulates the amount of GLUT4 that is available at the cell surface.
Tissue specificity	Ubiquitous. Highly expressed in testis, heart, skeletal muscle and pancreas.
Involvement in disease	Note=A chromosomal aberration involving ASPSCR1 is found in patients with alveolar soft part sarcoma. Translocation t(X;17)(p11;q25) with TFE3 forms a ASPSCR1-TFE3 fusion protein. Note=A chromosomal aberration involving ASPSCR1 has been found in two patients with of papillary renal cell carcinoma. Translocation t(X;17)(p11.2;q25).
Sequence similarities	Contains 1 UBX domain.
Cellular localization	Endomembrane system.

Images



Lane 1: Wild-type HAP1 cell lysate (20 µg)
Lane 2: TUG knockout HAP1 cell lysate (20 µg)
Lane 3: NIH/3T3 cell lysate (20 µg)
Lane 4: HEK293 cell lysate (20 µg)
Lanes 1 - 4: Merged signal (red and green). Green - ab131217 observed at 70 kDa. Red - loading control, **ab8245**, observed at 37 kDa.

ab131217 was shown to specifically react with TUG when TUG knockout samples were used. Wild-type and TUG knockout samples were subjected to SDS-PAGE. ab131217 and **ab8245** (loading control to GAPDH) were both diluted 1/10000 and incubated overnight at 4°C. Blots were developed with Goat anti-Rabbit IgG H&L (IRDye® 800CW) preadsorbed **ab216773** and Goat anti-Mouse IgG H&L (IRDye® 680RD) preadsorbed **ab216776** secondary antibodies at 1/10000 dilution for 1 hour at room temperature before imaging.



All lanes : Anti-TUG antibody [EPR8616] (ab131217) at 1/10000 dilution

Lane 1 : K562 cell lysate

Lane 2 : 293T cell lysate

Lane 3 : SW480 cell lysate

Lysates/proteins at 10 µg per lane.

Predicted band size: 60 kDa

Why choose a recombinant antibody?

<p>Research with confidence Consistent and reproducible results</p>	<p>Long-term and scalable supply Recombinant technology</p>
<p>Success from the first experiment Confirmed specificity</p>	<p>Ethical standards compliant Animal-free production</p>

Anti-TUG antibody [EPR8616] (ab131217)

Please note: All products are "FOR RESEARCH USE ONLY. NOT FOR USE IN DIAGNOSTIC PROCEDURES"

Our Abpromise to you: Quality guaranteed and expert technical support

- Replacement or refund for products not performing as stated on the datasheet
- Valid for 12 months from date of delivery
- Response to your inquiry within 24 hours
- We provide support in Chinese, English, French, German, Japanese and Spanish
- Extensive multi-media technical resources to help you
- We investigate all quality concerns to ensure our products perform to the highest standards

If the product does not perform as described on this datasheet, we will offer a refund or replacement. For full details of the Abpromise, please visit <https://www.abcam.com/abpromise> or contact our technical team.

Terms and conditions

- Guarantee only valid for products bought direct from Abcam or one of our authorized distributors