


# Anti-TUSC3 antibody ab230520

[2 References](#) [4 Images](#)

### Overview

<b>Product name</b>	Anti-TUSC3 antibody
<b>Description</b>	Rabbit polyclonal to TUSC3
<b>Host species</b>	Rabbit
<b>Tested applications</b>	<b>Suitable for:</b> WB, ICC/IF, IHC-P
<b>Species reactivity</b>	<b>Reacts with:</b> Human <b>Predicted to work with:</b> Cow, Monkey 
<b>Immunogen</b>	Synthetic peptide corresponding to Human TUSC3 (internal sequence) conjugated to keyhole limpet haemocyanin. Database link: <a href="#">Q13454</a>
<b>Positive control</b>	IHC-P: Human colon cancer and testis tissue. ICC/IF: HeLa cells. WB: SK-BR-3, HeLa, HepG2 and MDA-MB-231 whole cell lysates.
<b>General notes</b>	<p>The Life Science industry has been in the grips of a reproducibility crisis for a number of years. Abcam is leading the way in addressing this with our range of recombinant monoclonal antibodies and knockout edited cell lines for gold-standard validation. Please check that this product meets your needs before purchasing.</p> <p>If you have any questions, special requirements or concerns, please send us an inquiry and/or contact our Support team ahead of purchase. Recommended alternatives for this product can be found below, along with publications, customer reviews and Q&amp;As</p>

### Properties

<b>Form</b>	Liquid
<b>Storage instructions</b>	Shipped at 4°C. Store at +4°C short term (1-2 weeks). Upon delivery aliquot. Store at -20°C long term. Avoid freeze / thaw cycle.
<b>Storage buffer</b>	pH: 7.30 Preservative: 0.01% Sodium azide Constituents: PBS, 30% Glycerol (glycerin, glycerine)
<b>Purity</b>	Immunogen affinity purified
<b>Clonality</b>	Polyclonal
<b>Isotype</b>	IgG

## Applications

### The Abpromise guarantee

Our **Abpromise guarantee** covers the use of ab230520 in the following tested applications.

The application notes include recommended starting dilutions; optimal dilutions/concentrations should be determined by the end user.

Application	Abreviews	Notes
WB		1/500 - 1/1000. Predicted molecular weight: 40 kDa.
ICC/IF		1/100 - 1/500.
IHC-P		1/100. Perform heat mediated antigen retrieval with citrate buffer pH 6 before commencing with IHC staining protocol.

## Target

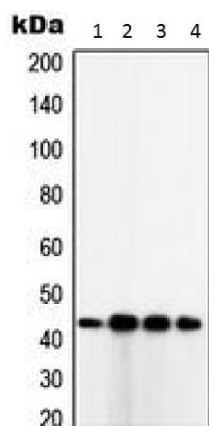
### Relevance

TUSC3 belongs to the OST3/OST6 family of proteins and may be involved in N-glycosylation through its association with N-oligosaccharyl transferase. The TUSC3 gene is a candidate tumour suppressor.

### Cellular localization

Endoplasmic reticulum membrane; Multi-pass membrane protein.

## Images



Western blot - Anti-TUSC3 antibody (ab230520)

**All lanes :** Anti-TUSC3 antibody (ab230520) at 1/500 dilution

**Lane 1 :** SK-BR-3 (Human mammary gland adenocarcinoma cell line)

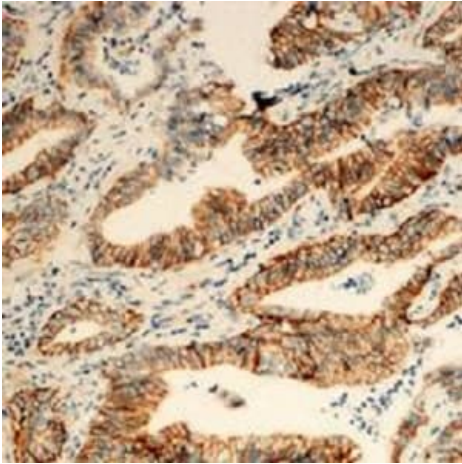
**Lane 2 :** HeLa (Human epithelial cell line from cervix adenocarcinoma)

**Lane 3 :** HepG2 (Human liver hepatocellular carcinoma cell line)

**Lane 4 :** MDA-MB-231 (Human breast adenocarcinoma cell line)

Developed using the ECL technique.

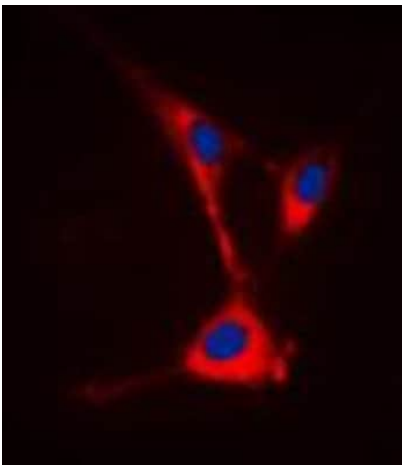
**Predicted band size:** 40 kDa



Immunohistochemistry (Formalin/PFA-fixed paraffin-embedded sections) - Anti-TUSC3 antibody (ab230520)

Formalin-fixed, paraffin-embedded human colon cancer tissue stained for TUSC3 with ab230520 at a 1/100 dilution in immunohistochemical analysis.

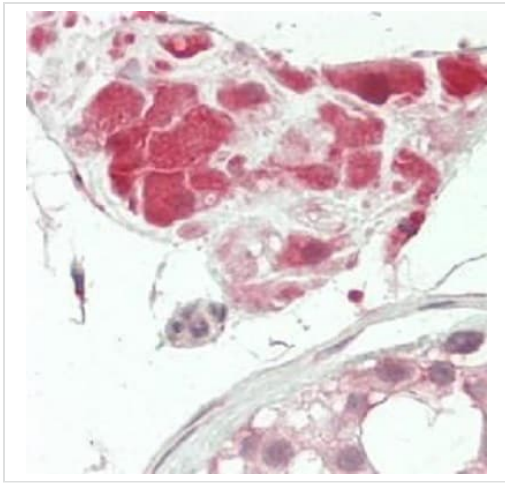
The section was pre-treated using heat mediated antigen retrieval with sodium citrate buffer (pH 6.0). The section was then incubated with ab230520 at room temperature and detected using an HRP conjugated compact polymer system. DAB was used as the chromogen. The section was then counterstained with hematoxylin and mounted with DPX.



Immunocytochemistry/ Immunofluorescence - Anti-TUSC3 antibody (ab230520)

HeLa (Human epithelial cell line from cervix adenocarcinoma) cells stained for TUSC3 using ab230520 at a dilution of 1/100 in ICC/IF.

Formalin-fixed cells were permeabilized with 0.1% Triton X-100 in TBS for 5-10 minutes and blocked with 3% BSA-PBS for 30 minutes at room temperature. Cells were probed with the primary antibody in 3% BSA-PBS and incubated overnight at 4°C in a humidified chamber. Cells were washed with PBST and incubated with a DyLight® 594-conjugated secondary antibody (red) in PBS at room temperature in the dark. DAPI was used to stain the cell nuclei (blue).



Formalin-fixed, paraffin-embedded human testis tissue stained for TUSC3 with ab230520 at a 1/100 dilution in immunohistochemical analysis.

Immunohistochemistry (Formalin/PFA-fixed paraffin-embedded sections) - Anti-TUSC3 antibody (ab230520)

**Please note:** All products are "FOR RESEARCH USE ONLY. NOT FOR USE IN DIAGNOSTIC PROCEDURES"

### Our Abpromise to you: Quality guaranteed and expert technical support

---

- Replacement or refund for products not performing as stated on the datasheet
- Valid for 12 months from date of delivery
- Response to your inquiry within 24 hours
- We provide support in Chinese, English, French, German, Japanese and Spanish
- Extensive multi-media technical resources to help you
- We investigate all quality concerns to ensure our products perform to the highest standards

If the product does not perform as described on this datasheet, we will offer a refund or replacement. For full details of the Abpromise, please visit <https://www.abcam.com/abpromise> or contact our technical team.

### Terms and conditions

---

- Guarantee only valid for products bought direct from Abcam or one of our authorized distributors