


Product datasheet

Anti-TWF1/Twinfilin-1 antibody ab154725

[1 References](#) [3 Images](#)

Overview

Product name	Anti-TWF1/Twinfilin-1 antibody
Description	Rabbit polyclonal to TWF1/Twinfilin-1
Host species	Rabbit
Tested applications	Suitable for: WB, ICC/IF
Species reactivity	Reacts with: Mouse, Human Predicted to work with: Rat, Cow 
Immunogen	Recombinant fragment within Human TWF1/Twinfilin-1 aa 92-338. The exact sequence is proprietary. Database link: Q12792
Positive control	WB: 293T, A431, H1299, HeLaS3 and NIH-3T3 whole cell lysates. ICC/IF: HeLa cells.
General notes	<p>The Life Science industry has been in the grips of a reproducibility crisis for a number of years. Abcam is leading the way in addressing this with our range of recombinant monoclonal antibodies and knockout edited cell lines for gold-standard validation. Please check that this product meets your needs before purchasing.</p> <p>If you have any questions, special requirements or concerns, please send us an inquiry and/or contact our Support team ahead of purchase. Recommended alternatives for this product can be found below, along with publications, customer reviews and Q&As</p>

Properties

Form	Liquid
Storage instructions	Shipped at 4°C. Upon delivery aliquot. Store at -20°C or -80°C. Avoid freeze / thaw cycle.
Storage buffer	pH: 7.00 Preservative: 0.01% Thimerosal (merthiolate) Constituents: 1.21% Tris, 0.75% Glycine, 10% Glycerol (glycerin, glycerine)
Purity	Immunogen affinity purified
Clonality	Polyclonal
Isotype	IgG

Applications

The Abpromise guarantee

Our **Abpromise guarantee** covers the use of ab154725 in the following tested applications.

The application notes include recommended starting dilutions; optimal dilutions/concentrations should be determined by the end user.

Application	Abreviews	Notes
WB		1/1000 - 1/10000. Predicted molecular weight: 40 kDa.
ICC/IF		1/100 - 1/1000.

Target

Function

Actin-binding protein involved in motile and morphological processes. Inhibits actin polymerization, likely by sequestering G-actin. By capping the barbed ends of filaments, it also regulates motility. Seems to play an important role in clathrin-mediated endocytosis and distribution of endocytic organelles.

Tissue specificity

Expressed at high levels in the colon, testis, ovary, prostate and lung. Expressed at lower levels in the brain, bladder and heart. Not detected in liver.

Sequence similarities

Belongs to the actin-binding proteins ADF family. Twinfilin subfamily. Contains 2 ADF-H domains.

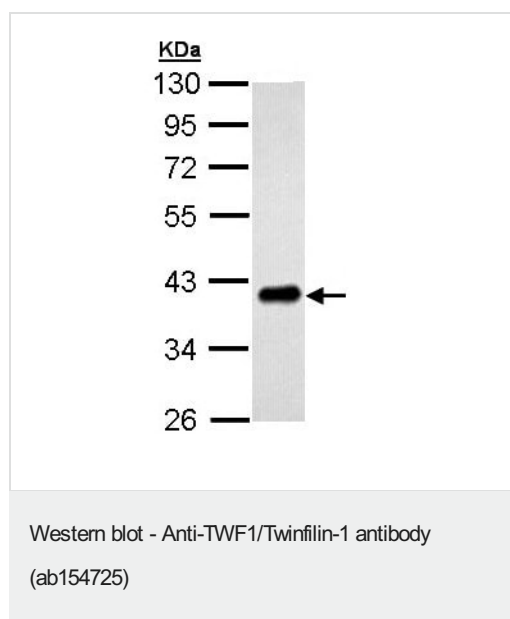
Post-translational modifications

Phosphorylated on serine and threonine residues.

Cellular localization

Cytoplasm. Cytoplasm > cytoskeleton. Diffuse cytoplasmic localization with perinuclear and G-actin-rich cortical actin structures sublocalization. Also found at membrane ruffles and cell-cell contacts.

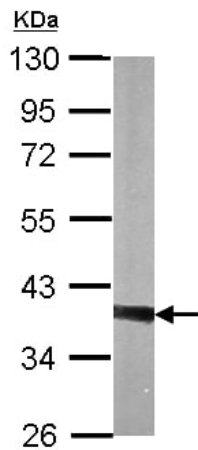
Images



Anti-TWF1/Twinfilin-1 antibody (ab154725) at 1/5000 dilution + H1299 whole cell lysate at 30 µg

Predicted band size: 40 kDa

10% SDS PAGE.

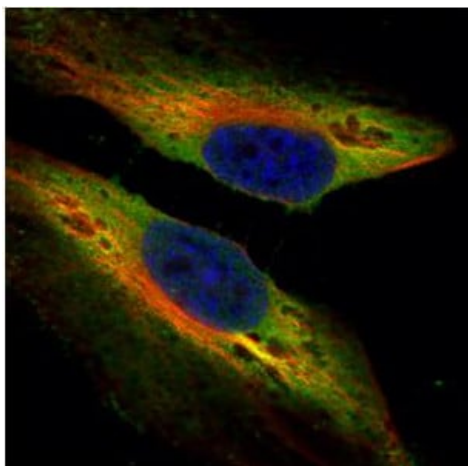


Western blot - Anti-TWF1/Twinfilin-1 antibody
(ab154725)

Anti-TWF1/Twinfilin-1 antibody (ab154725) at 1/5000 dilution +
NIH-3T3 whole cell lysate at 30 μ g

Predicted band size: 40 kDa

10% SDS PAGE.



Immunocytochemistry/ Immunofluorescence - Anti-
TWF1/Twinfilin-1 antibody (ab154725)

Immunofluorescent analysis, by confocal microscopy, of
paraformaldehyde-fixed HeLa cells labeling TWF1/Twinfilin-1 with
ab154725 at 1/500 dilution (green). Alpha-tubulin filaments were
labeled in red.

Please note: All products are "FOR RESEARCH USE ONLY. NOT FOR USE IN DIAGNOSTIC PROCEDURES"

Our Abpromise to you: Quality guaranteed and expert technical support

- Replacement or refund for products not performing as stated on the datasheet
- Valid for 12 months from date of delivery
- Response to your inquiry within 24 hours
- We provide support in Chinese, English, French, German, Japanese and Spanish
- Extensive multi-media technical resources to help you
- We investigate all quality concerns to ensure our products perform to the highest standards

If the product does not perform as described on this datasheet, we will offer a refund or replacement. For full details of the Abpromise,

please visit <https://www.abcam.com/abpromise> or contact our technical team.

Terms and conditions

- Guarantee only valid for products bought direct from Abcam or one of our authorized distributors