



## Product datasheet

### Anti-TXNDC5 antibody [2E7/7] ab174639

[1 References](#) [1 Image](#)

#### Overview

<b>Product name</b>	Anti-TXNDC5 antibody [2E7/7]
<b>Description</b>	Mouse monoclonal [2E7/7] to TXNDC5
<b>Host species</b>	Mouse
<b>Tested applications</b>	<b>Suitable for:</b> ICC/IF
<b>Species reactivity</b>	<b>Reacts with:</b> Human
<b>Immunogen</b>	Synthetic peptide corresponding to Human TXNDC5 aa 52-63. Sequence: ADGEDGQDPHSK  Database link: <a href="#">Q8NBS9</a> <div>  <a href="#">Run BLAST with</a>  <a href="#">Run BLAST with</a> </div>
<b>Positive control</b>	ICC/IF: HeLa cells
<b>General notes</b>	<p>The Life Science industry has been in the grips of a reproducibility crisis for a number of years. Abcam is leading the way in addressing this with our range of recombinant monoclonal antibodies and knockout edited cell lines for gold-standard validation. Please check that this product meets your needs before purchasing.</p> <p>If you have any questions, special requirements or concerns, please send us an inquiry and/or contact our Support team ahead of purchase. Recommended alternatives for this product can be found below, along with publications, customer reviews and Q&amp;As</p>

#### Properties

<b>Form</b>	Liquid
<b>Storage instructions</b>	Shipped at 4°C. Store at +4°C short term (1-2 weeks). Upon delivery aliquot. Store at -20°C long term. Avoid freeze / thaw cycle.
<b>Storage buffer</b>	Preservative: 0.09% Sodium azide Constituents: PBS, 50% Glycerol (glycerin, glycerine)
<b>Purity</b>	Protein G purified
<b>Clonality</b>	Monoclonal
<b>Clone number</b>	2E7/7

Isotype

IgG2a

## Applications

### The Abpromise guarantee

Our **Abpromise guarantee** covers the use of ab174639 in the following tested applications.

The application notes include recommended starting dilutions; optimal dilutions/concentrations should be determined by the end user.

Application	Abreviews	Notes
ICC/IF		1/100.

## Target

### Function

Possesses thioredoxin activity. Has been shown to reduce insulin disulfide bonds. Also complements protein disulfide-isomerase deficiency in yeast.

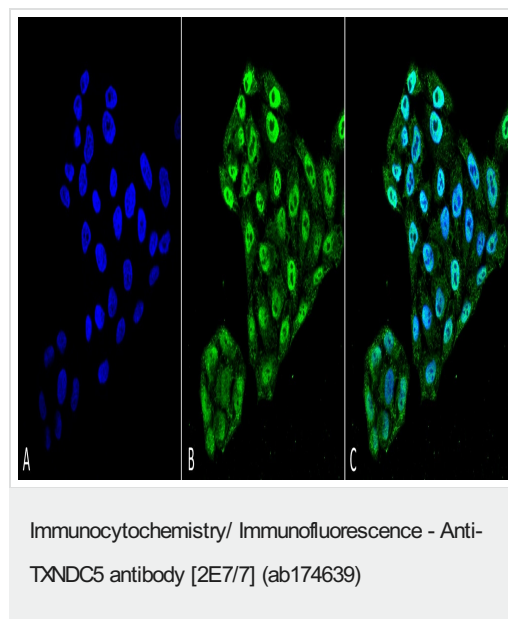
### Sequence similarities

Belongs to the protein disulfide isomerase family.  
Contains 3 thioredoxin domains.

### Cellular localization

Endoplasmic reticulum lumen.

## Images



Immunocytochemistry/Immunofluorescence analysis HeLa cells labeling TXNDC5 with ab174639 at 1/100 for 60 min at RT.

Fixation: 4% Formaldehyde for 15 min at RT. Secondary Antibody: Goat Anti-Mouse ATTO 488 at 1/100 for 60 min at RT.

Counterstain: DAPI (blue) nuclear stain at 1/5000 for 5 min RT.

**Please note:** All products are "FOR RESEARCH USE ONLY. NOT FOR USE IN DIAGNOSTIC PROCEDURES"

## Our Abpromise to you: Quality guaranteed and expert technical support

- Replacement or refund for products not performing as stated on the datasheet
- Valid for 12 months from date of delivery
- Response to your inquiry within 24 hours

- We provide support in Chinese, English, French, German, Japanese and Spanish
- Extensive multi-media technical resources to help you
- We investigate all quality concerns to ensure our products perform to the highest standards

If the product does not perform as described on this datasheet, we will offer a refund or replacement. For full details of the Abpromise, please visit <https://www.abcam.com/abpromise> or contact our technical team.

#### **Terms and conditions**

---

- Guarantee only valid for products bought direct from Abcam or one of our authorized distributors